



Lindisfarne, St. Johns Road, St. Helier  
£810,000

**BROADLANDS**  
FINDING YOU A HOME SINCE 1972



# Lindisfarne, St. Johns Road

St. Helier, Jersey

- Large detached home with flat
- Full renovation required
- Quiet elevated location
- Peace and tranquility
- Good size garden
- Parking for 6 cars on the driveway
- Sole agent





# Lindisfarne, St. Johns Road

St. Helier, Jersey

On the market for the first time since it was built in 1959, a detached spacious family home requiring complete renovation. At a later stage there has been the addition of a spacious ground floor 1 bedroom flat with it's own entrance.

Although in good structural order, most of the interior is completely original including wiring, plumbing, windows and decor. There is also no central heating. That said, this could be an ideal project for someone and they could live in the flat while undertaking the work on the house. The flat currently has a 6 month notice period with a tenant in situ and this should be taken in to consideration if the purchaser is looking at lending.

Located on the outskirts of town within the ever popular Clubley Estate but having it's own private driveway with plenty of parking.

Book your appointment to view with the owner's sole agent, Broadlands. Call or Whattsapp Nigel Hurst on 07797718233







## House

### Living

Large entrance hall with understairs cupboard and separate W.C. Lounge with functional fireplace. Separate dining room and kitchen. Access to gardens from lounge and kitchen.

### Sleeping

Double bedroom on ground floor. Upstairs are 2 very large doubles, a single and a house bathroom.

### Flat

Flat has it's own front door leading in to the kitchen. Beyond is a lounge and an en suite double bedroom.

### Services

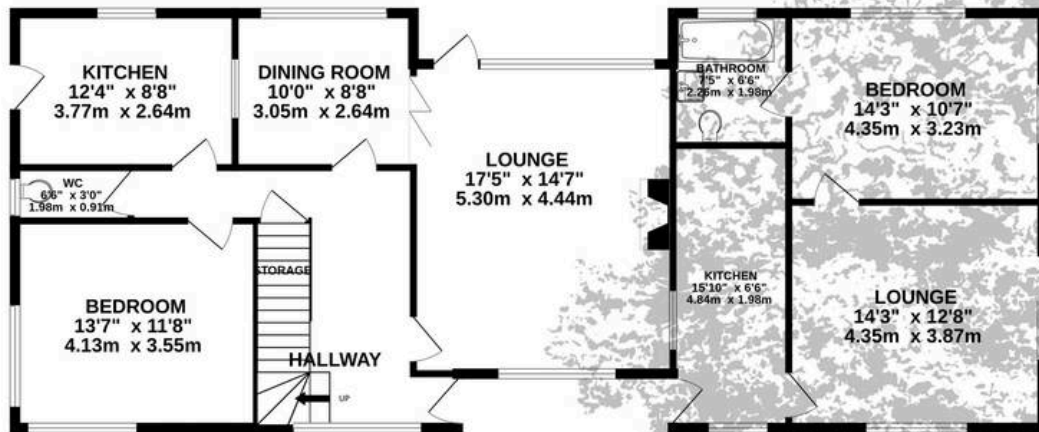
Mains water and drains. Electric heating in flat. No central heating., single glazed.



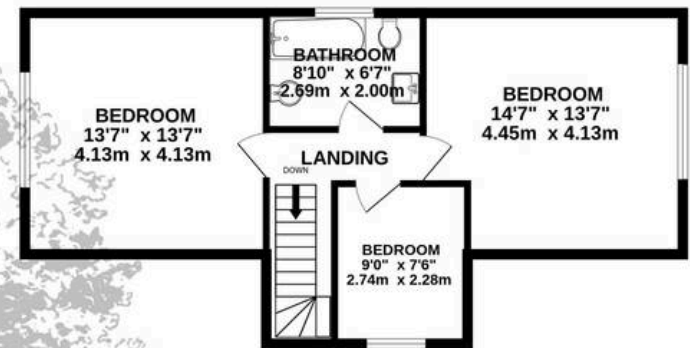




GROUND FLOOR  
1260 sq.ft. (117.0 sq.m.) approx.



1ST FLOOR  
558 sq.ft. (51.8 sq.m.) approx.



TOTAL FLOOR AREA : 1817 sq.ft. (168.8 sq.m.) approx.

Whilst every attempt has been made to ensure the accuracy of the floorplan contained here, measurements of doors, windows, rooms and any other items are approximate and no responsibility is taken for any error, omission or mis-statement. This plan is for illustrative purposes only and should be used as such by any prospective purchaser. The services, systems and appliances shown have not been tested and no guarantee as to their operability or efficiency can be given.

Made with Metropix ©2025





## Broadlands

Broadlands Estates, Library Place - JE2 3NL

01534 880770 • [enquiries@broadlandsjersey.com](mailto:enquiries@broadlandsjersey.com) • [www.broadlandsjersey.com/](http://www.broadlandsjersey.com/)

# BROADLANDS

FINDING YOU A HOME SINCE 1972