

Marshwood

Lettings & Property Management



22 Stoke Water House
Beaminster DT8

£1,250 pcm

A spacious and well-presented 2/3-bedroom flat with tidy communal gardens in a secluded private development close to Beaminster



Stoke Water House is a stunning country house that was converted into spacious apartments in the mid 1970s. Set in 3 acres of private grounds, maintained by the Residents Association, the amenities include a picnic area, drying area, and access to local footpaths into the countryside beyond. The property benefits from a peaceful countryside location but is just over a mile from the centre of Beaminster with its range of local shops and amenities; a further 5 miles away is the bustling town of Bridport with artisan shops and larger commercial shops.

Accommodation comprises:

- Porch – deep cupboard with boiler
- Hall with access to narrow Conservatory
- Bedroom 1 – walk-in wardrobe & En-suite Shower
- Bedroom 2 – with wardrobe
- Study/Bedroom 3
- Bathroom
- Kitchen
- Dining Room leading to Kitchen and Reception Room
- Large Reception Room with triple aspect views

Rent

£1,250 per month

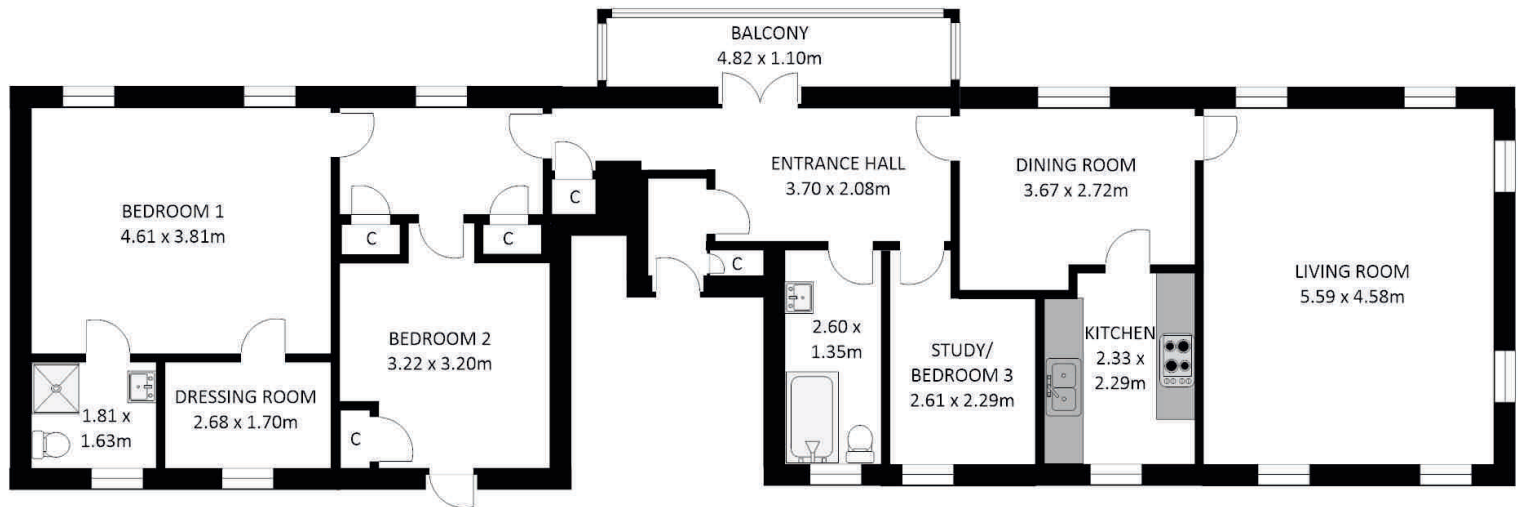
Deposit

£1,442 to be held by the DPS (5 weeks' rent)

Score	Energy rating	Current	Potential
92+	A		
81-91	B		
69-80	C		76 C
55-68	D	67 D	
39-54	E		
21-38	F		
1-20	G		



22 Stoke Water House, Beaminster DT8



Whilst every care has been taken to ensure the accuracy of this floor plan, measurements of rooms, windows, doors and wall thickness are approximate and no responsibility is taken by Marshwood Lettings for any error or omission. This floor plan is for representation purposes and initial guidance only. **Copyright Marshwood Lettings & Property Management 2025**