



Flat 20.05, Aragon Tower George Beard Road, London

London

In Excess of £375,000



Flat 20.05

Aragon Tower George Beard Road,
London

Enjoying breath-taking views across London, this apartment occupies the twentieth floor of Aragon Tower's original 'Z' style apartments offering the very best vista these apartments have to offer. The privately-owned, fully-residential Aragon Tower was developed in the early 2000's by Barclay Homes, converted from the skeleton of an earlier residential development and careful to retain the unique, award-winning layouts which mean all apartment have windows on both sides, with views south to Greenwich and north to Canary Wharf and Central London. Today the apartments are popular with homeowners commuting to Canary Wharf via the recently upgraded UberBoats at Greenland Pier. This two bedroom unit is offered to the market chain-free and ready to occupy

Council Tax band: C

Tenure: Leasehold

EPC Energy Efficiency Rating: B

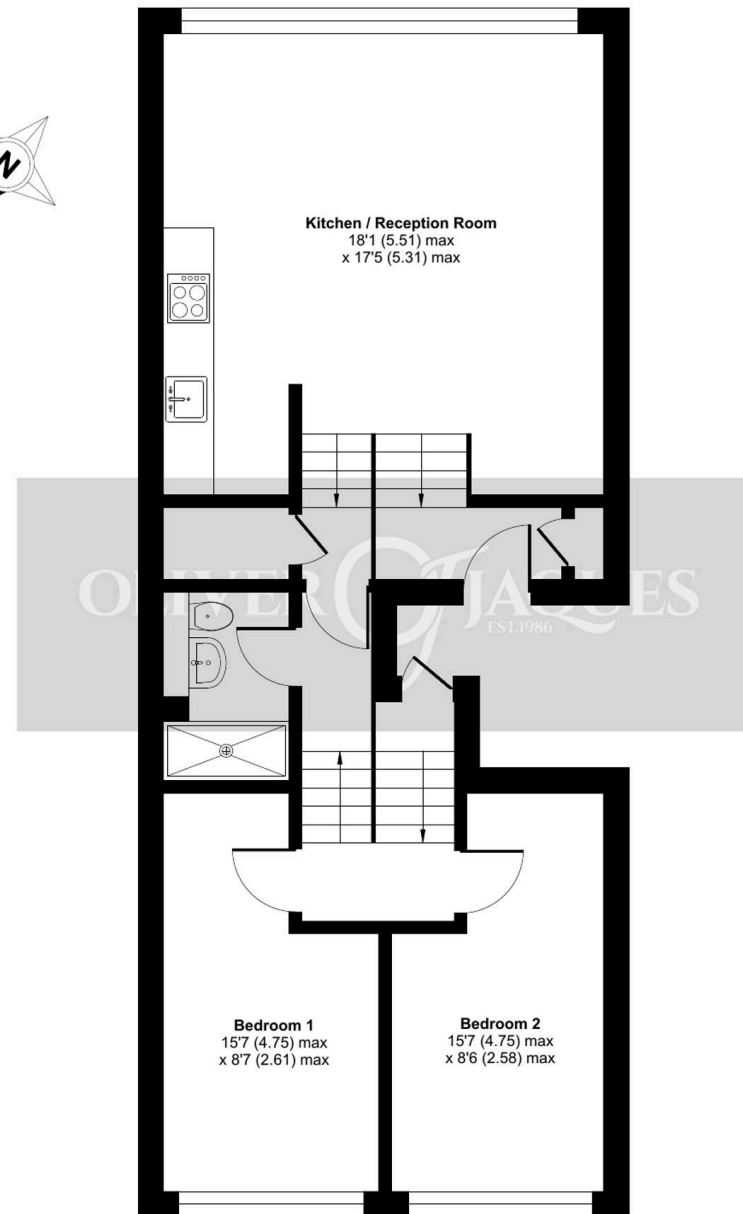
EPC Environmental Impact Rating: C

- Twentieth Floor Apartment
- Two Bedroom Apartment
- 24hr Concierge Service
- Secure Parking Space
- Stunning Views
- Secure Storage Cupboard for Bikes / Pushchair etc

George Beard Road, London, SE8

Approximate Area = 716 sq ft / 66.5 sq m

For identification only - Not to scale



TWENTIETH FLOOR



Floor plan produced in accordance with RICS Property Measurement 2nd Edition, Incorporating International Property Measurement Standards (IPMS2 Residential). © n/cheom 2025. Produced for Oliver Jaques. REF: 1380708



Oliver Jaques

Oliver Jaques, 229-231 Lower Road - SE16 2LW

02072315050 • southeast@o-j.co.uk • o-j.co.uk/

Every care has been taken with the preparation of this brochure but it is for general guidance and complete accuracy can't be guaranteed. Prospective purchasers should seek clarification from their solicitor. The mention of any appliances fixtures or fittings does not imply they are in working order.