





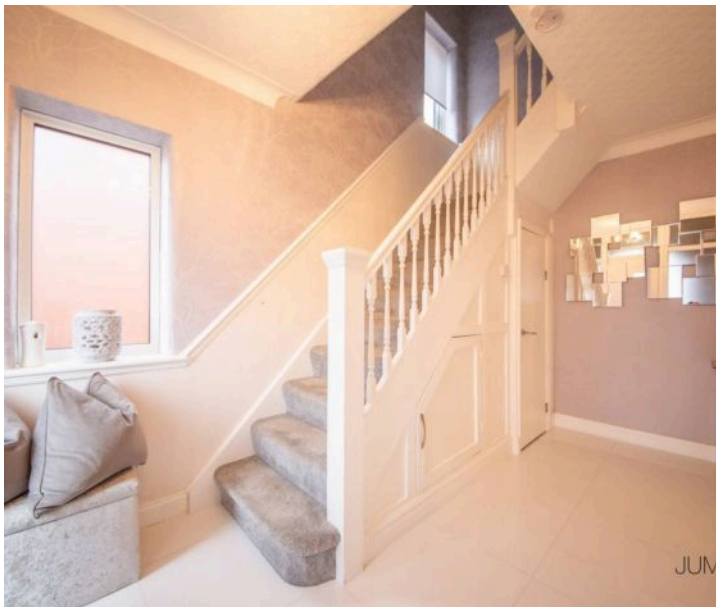
191 Liverpool Road

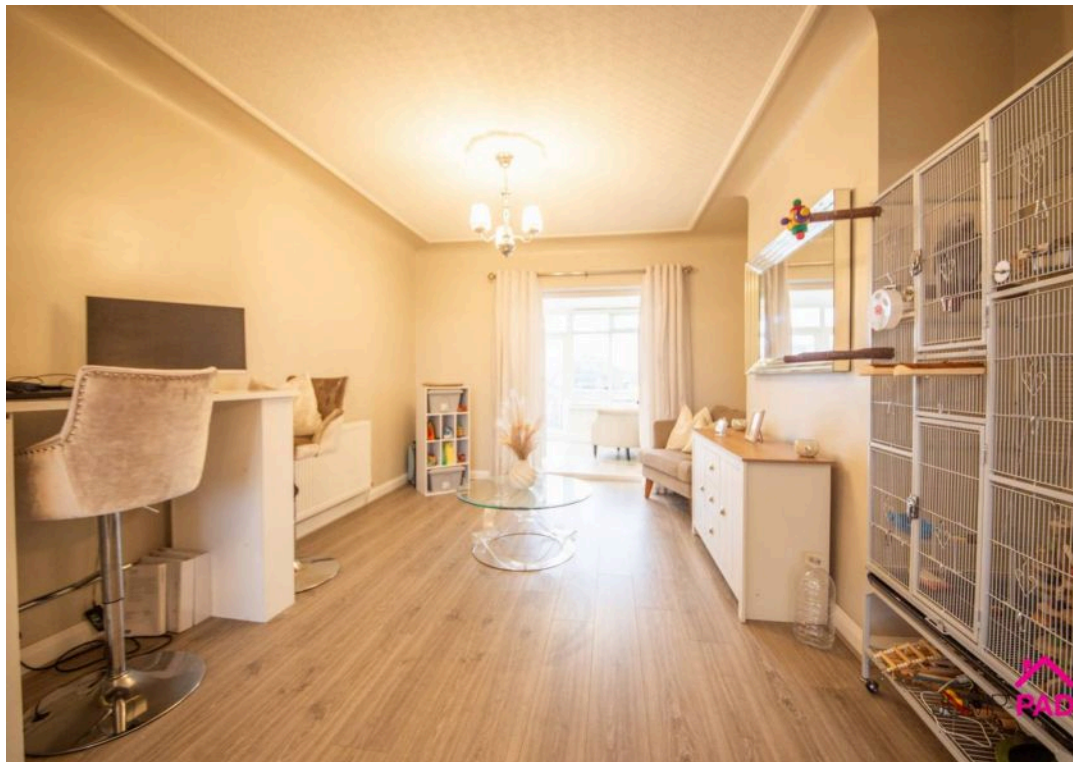
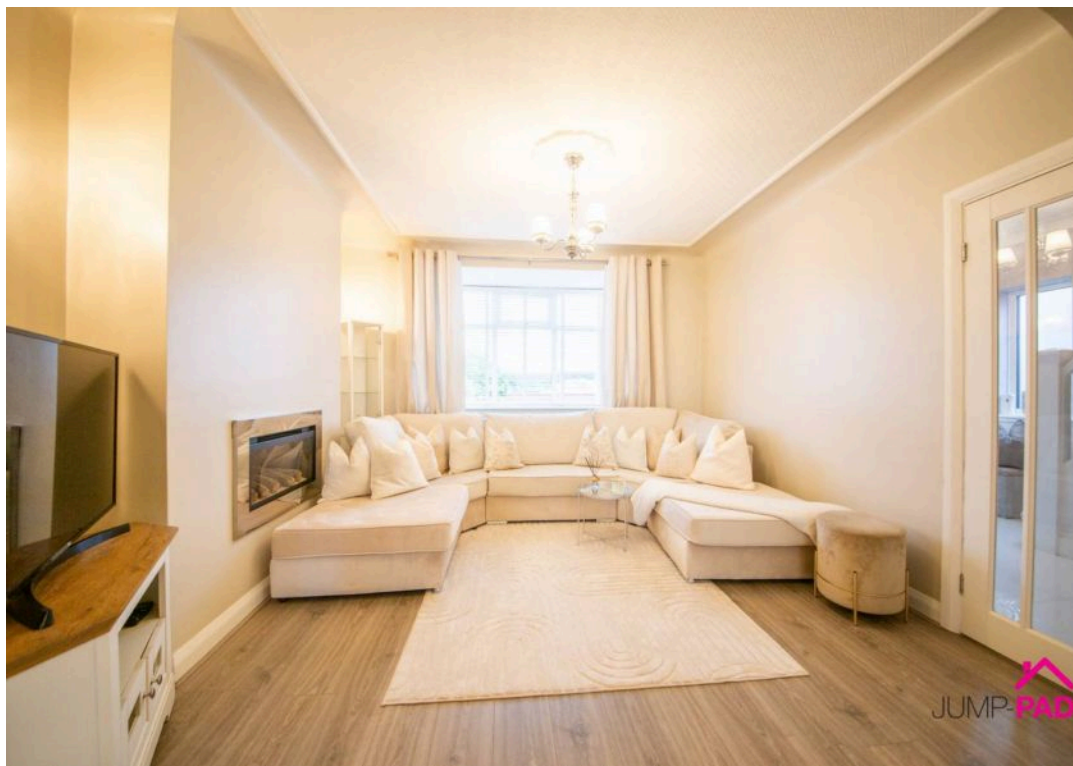
Haydock, St. Helens

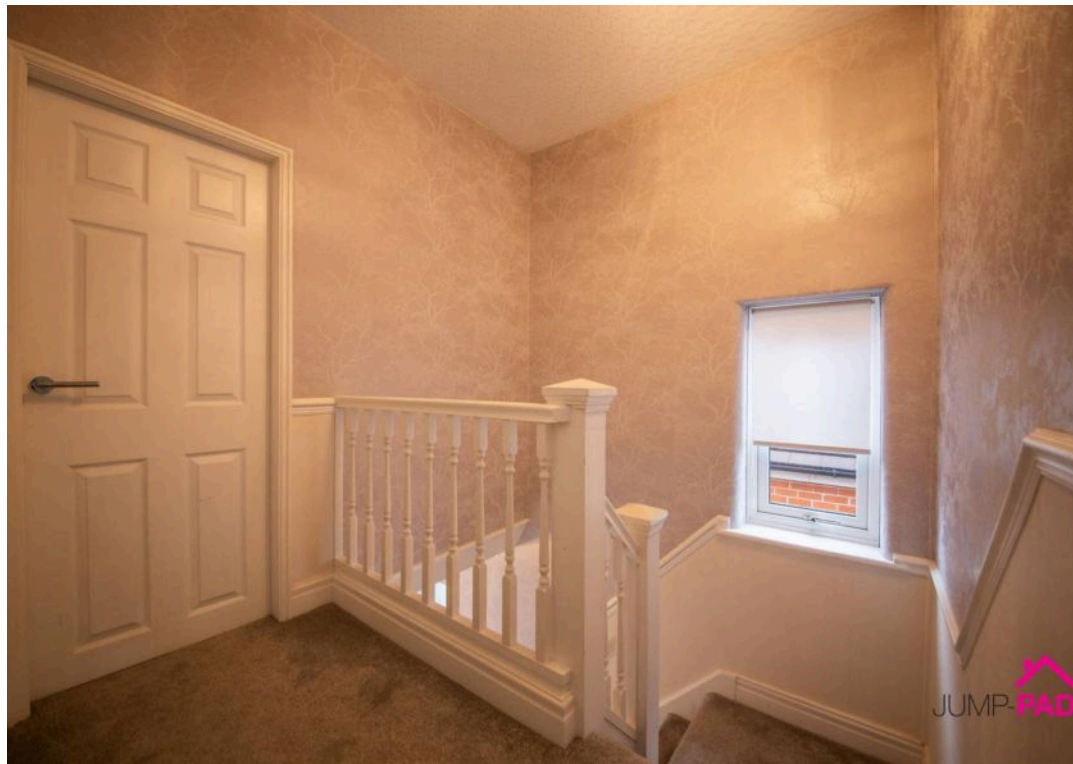
Updated, Extended, 3 bed semi with farmland views.
Spacious living room, dining room, family room, modern kitchen, and WC. Upstairs, three good-sized bedrooms, family bathroom. South-facing garden
Council Tax band: C

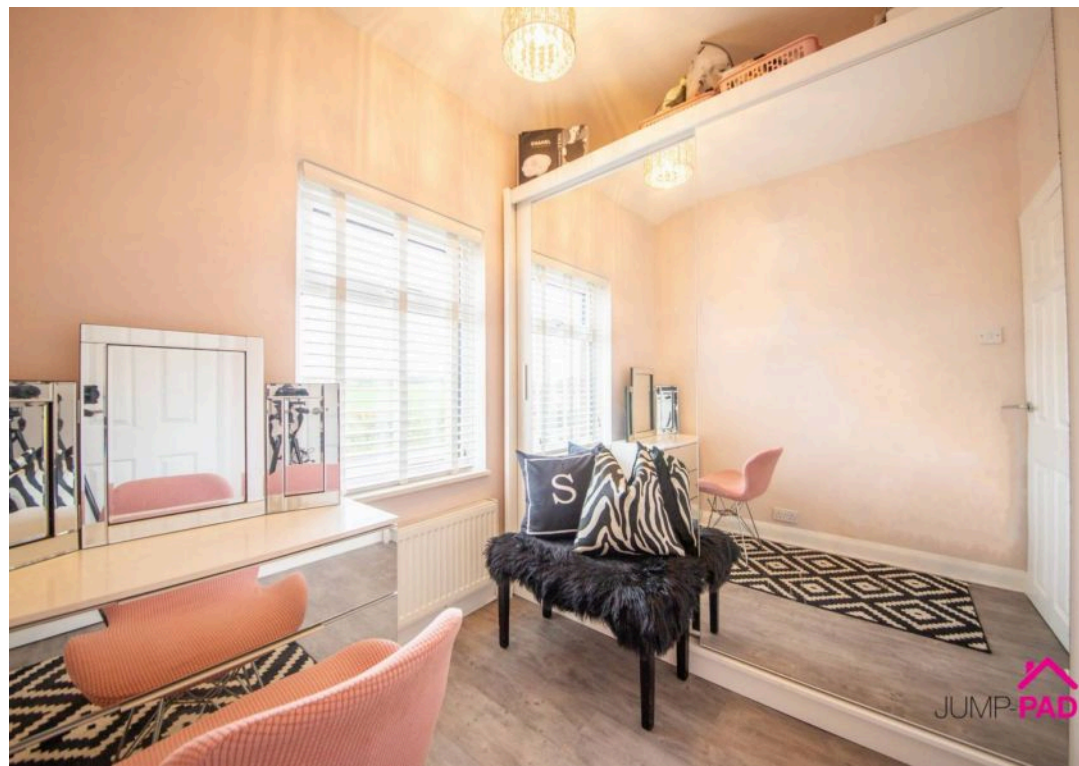
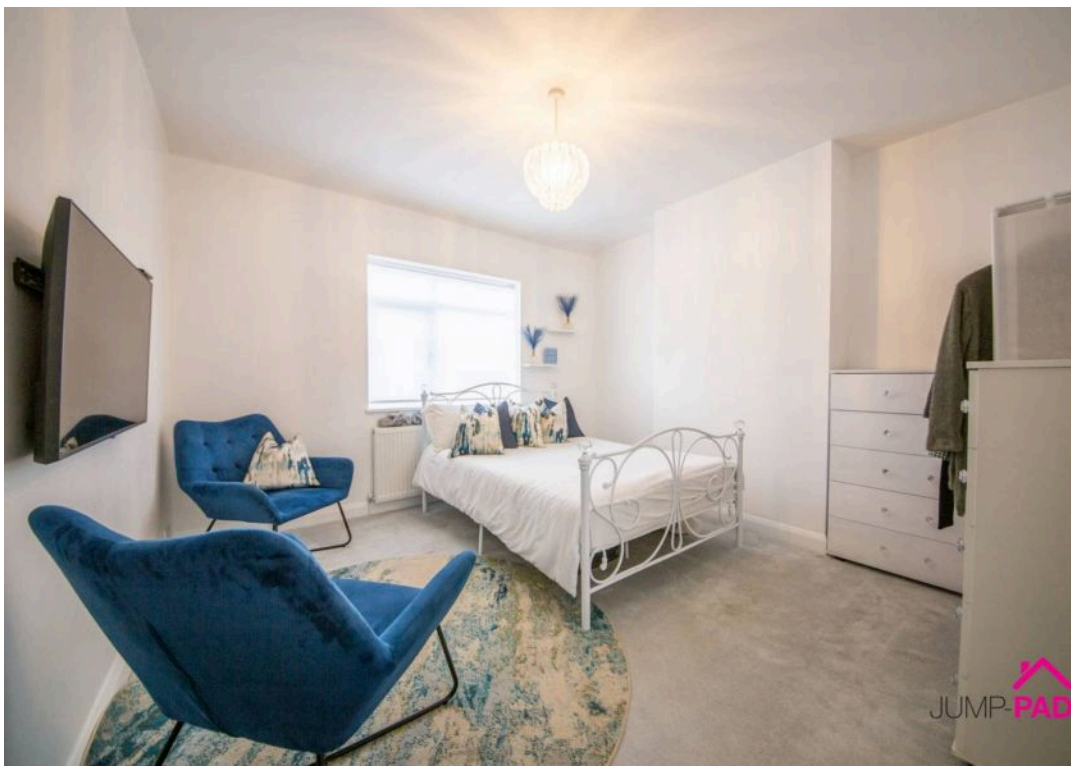
Tenure: Leasehold

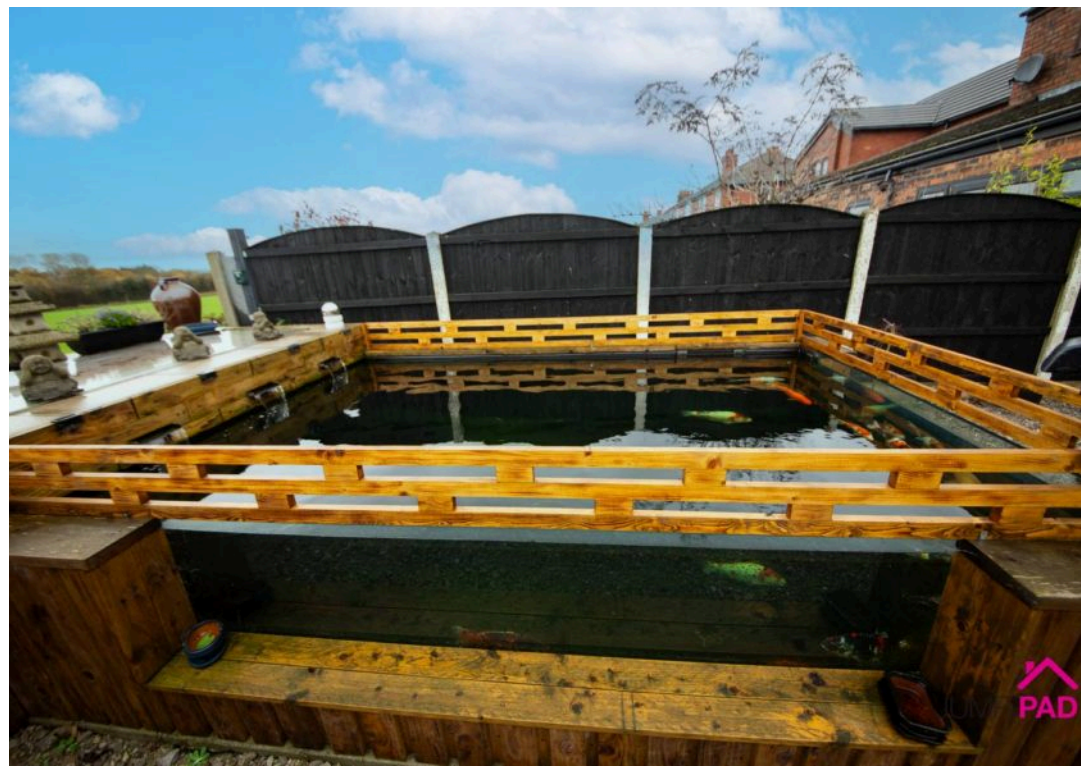
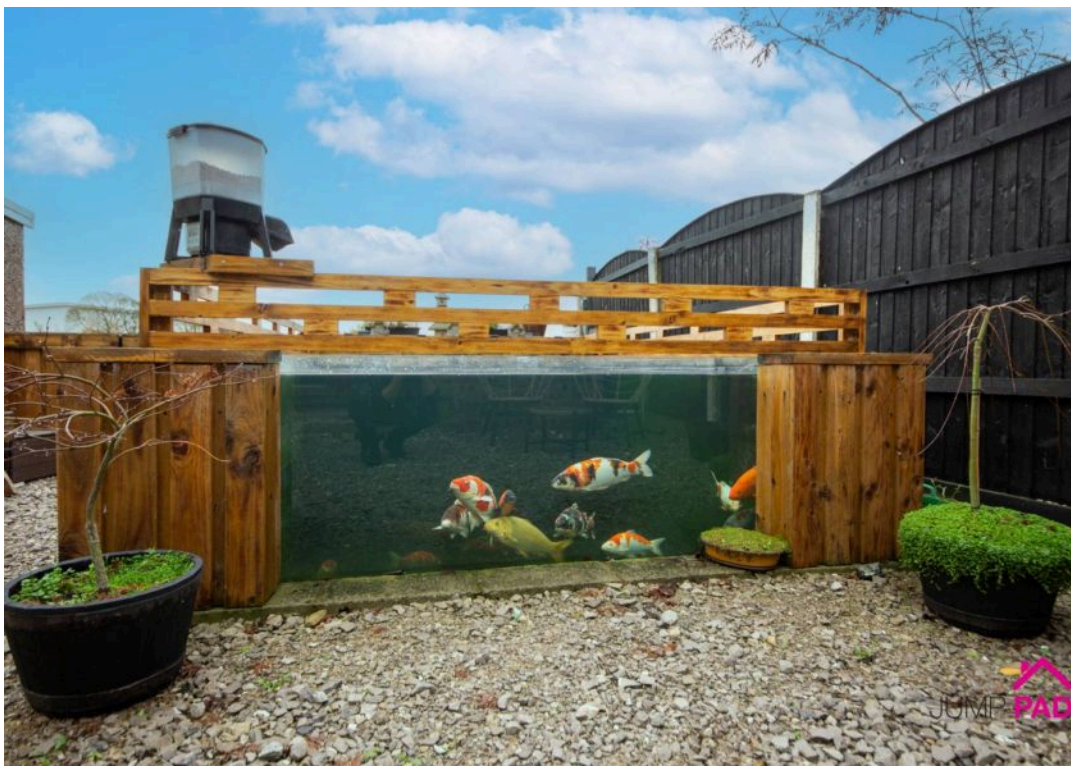
- An updated, extended, 3 bedroom semi detached property
- Spacious living room, dining room, family room, kitchen, downstairs WC
- Three good-sized bedrooms, family bathroom
- South Facing Garden with open aspect farmland views
- Driveway with off-street parking and gated side access

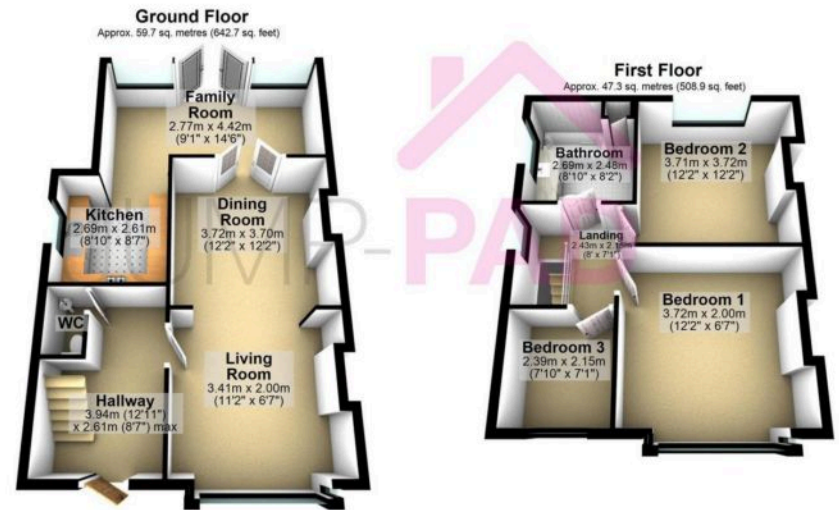












Total area: approx. 107.0 sq. metres (1151.6 sq. feet)

Floor plans are intended to give an indication of the layout only. All images, floor plans and dimensions are not intended to form part any contract.
Plan produced using PlanUp.

