

32 Regent Road

Epping, Essex

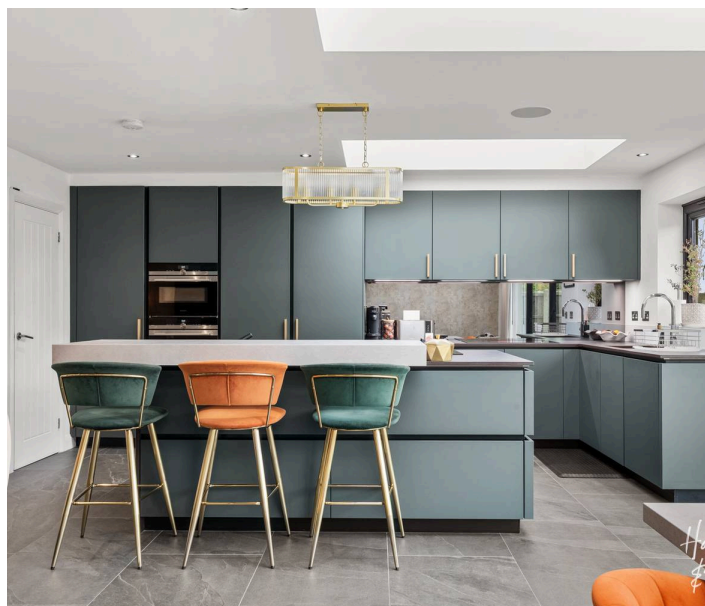
Guide Price £1,200,000

Tucked away on the much-desired Regent Road, Epping, this beautifully designed four-double bedroom home is an absolute gem. Blending luxurious comfort with clever practicality, its perfect for modern family living. Just a short walk to the High Street and Underground tube, locations don't get much better.

Council Tax band: E

Tenure: Freehold

- Chain Free
- Four double bedrooms
- Driveway
- Open plan living
- Ground floor shower room
- Primary bedroom with ensuite
- Spacious garden with garden
- Highly sought after location



Hallway

Living Room

10' 10" x 14' 11" (3.31m x 4.54m)

Study

6' 9" x 9' 9" (2.05m x 2.98m)

Ground Floor Shower Room / WC

Open Plan Kitchen / Diner / Family Room

25' 3" x 19' 8" (7.70m x 5.99m)

Bedroom

11' 2" x 8' 5" (3.40m x 2.56m)

Bedroom

10' 4" x 12' 3" (3.15m x 3.73m)

Interconnecting 'Secret' Passageway

Bedroom

10' 4" x 10' 11" (3.15m x 3.33m)

Bathroom

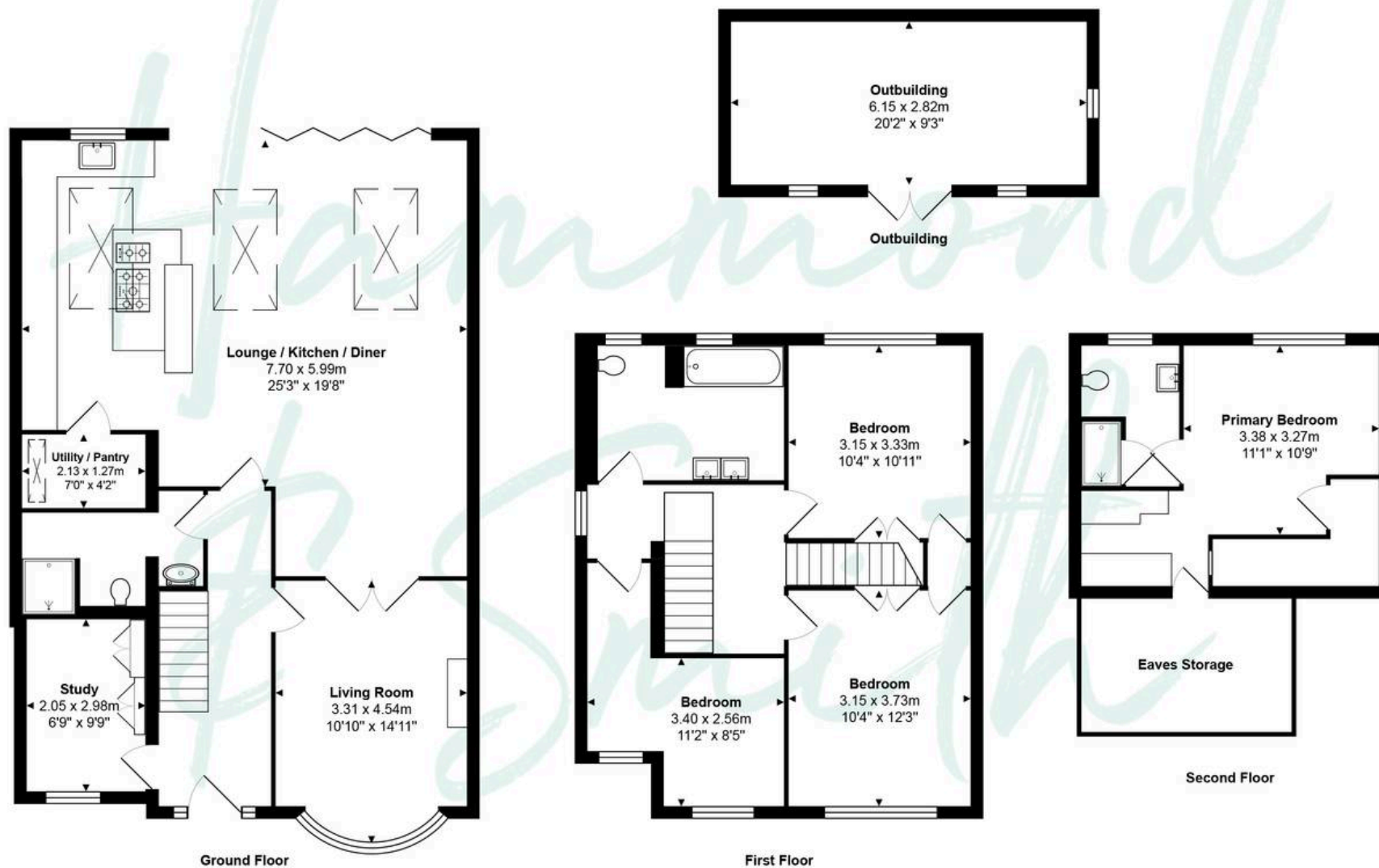
Primary Bedroom

11' 1" x 10' 9" (3.38m x 3.27m)

Ensuite Shower Room







Total Area: approx. 178.7 m² ... 1924 ft² (excluding eaves storage)

THE FLOORPLAN IS FOR ILLUSTRATIVE PURPOSES ONLY AND IS NOT TO SCALE.
Measurements and features are approximate and may differ from the actual property. Verify all details independently, no liability is accepted for errors or omissions.

Property marketing provided by www.fotomarketing.co.uk