



## 6 Nickerson Close, Ormesby

£385,000 Freehold

Set in a peaceful no-through road within the desirable Broadland village of Ormesby St Margaret, this beautifully finished modern detached home offers contemporary comfort and space for family living. Inside, a welcoming entrance hall opens to a bright lounge filled with natural light, while the heart of the home lies in the open-plan kitchen and dining area, designed with sleek white gloss cabinetry, dark composite worktops, integrated appliances, and French doors leading to the landscaped garden. A separate utility room with access to the garden and a convenient ground-floor WC add everyday practicality. Upstairs, five generous bedrooms provide versatility, including a principal suite with a stylish en suite shower room and a modern family bathroom finished with quality fittings. Outside, the rear garden was newly enclosed in 2025 and features a paved patio and neat lawn offering an inviting setting for relaxing or entertaining. The home also benefits from a large driveway for up to four vehicles, an integral garage with internal access, and excellent broadband and mobile connectivity, all just moments from local amenities, good schools, and the stunning Norfolk coastline.

Council Tax band: D

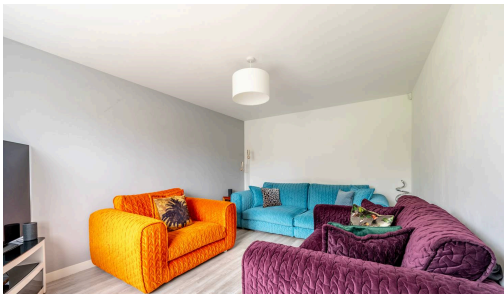


Set in a peaceful no-through road within the desirable Broadland village of Ormesby St Margaret, this beautifully finished modern detached home offers contemporary comfort and space for family living. Inside, a welcoming entrance hall opens to a bright lounge filled with natural light, while the heart of the home lies in the open-plan kitchen and dining area, designed with sleek white gloss cabinetry, dark composite worktops, integrated appliances, and French doors leading to the landscaped garden. A separate utility room with access to the garden and a convenient ground-floor WC add everyday practicality. Upstairs, five generous bedrooms provide versatility, including a principal suite with a stylish en suite shower room and a modern family bathroom finished with quality fittings. Outside, the rear garden was newly enclosed in 2025 and features a paved patio and neat lawn offering an inviting setting for relaxing or entertaining. The home also benefits from a large driveway for up to four vehicles, an integral garage with internal access, and excellent broadband and mobile connectivity, all just moments from local amenities, good schools, and the stunning Norfolk coastline.

**Location**



Set in a peaceful no-through road within the desirable Broadland village of Ormesby St Margaret, this beautifully finished modern detached home offers contemporary comfort and space for family living. Inside, a welcoming entrance hall opens to a bright lounge filled with natural light, while the heart of the home lies in the open-plan kitchen and dining area, designed with sleek white gloss cabinetry, dark composite worktops, integrated appliances, and French doors leading to the landscaped garden. A separate utility room with access to the garden and a convenient ground-floor WC add everyday





Set in a peaceful no-through road within the desirable Broadland village of Ormesby St Margaret, this beautifully finished modern detached home offers contemporary comfort and space for family living. Inside, a welcoming entrance hall opens to a bright lounge filled with natural light, while the heart of the home lies in the open-plan kitchen and dining area, designed with sleek white gloss cabinetry, dark composite worktops, integrated appliances, and French doors leading to the landscaped garden. A separate utility room with access to the garden and a convenient ground-floor WC add everyday practicality. Upstairs, five generous bedrooms provide versatility, including a principal suite with a stylish en suite shower room and a modern family bathroom finished with quality fittings. Outside, the rear garden was newly enclosed in 2025 and features a paved patio and neat lawn offering an inviting setting for relaxing or entertaining. The home also benefits from a large driveway for up to four vehicles, an integral garage with internal access, and excellent broadband and mobile connectivity, all just moments from local amenities, good schools, and the stunning Norfolk coastline.

## Location

Nickerson Close is located in the popular Broadland village of Ormesby St. Margaret, a short distance from the Norfolk coastline. The area offers a friendly community atmosphere with a range of local amenities, including shops, pubs, a primary school, and a village hall. Surrounded by open countryside yet within easy reach of Great Yarmouth and the A149, residents enjoy both peaceful village living and convenient access to nearby towns and beaches such as Caister-on-Sea and Hemsby. The nearby Ormesby Broad also provides scenic walking routes and opportunities for boating and wildlife spotting. Families appreciate the well-regarded local schools and strong sense of community spirit. For those who commute, Norwich can be reached in under 30 minutes by car, making it a practical location for work or leisure. The nearby coastline and Broads National Park add to the area's appeal, offering endless options for weekend exploration and outdoor activities.

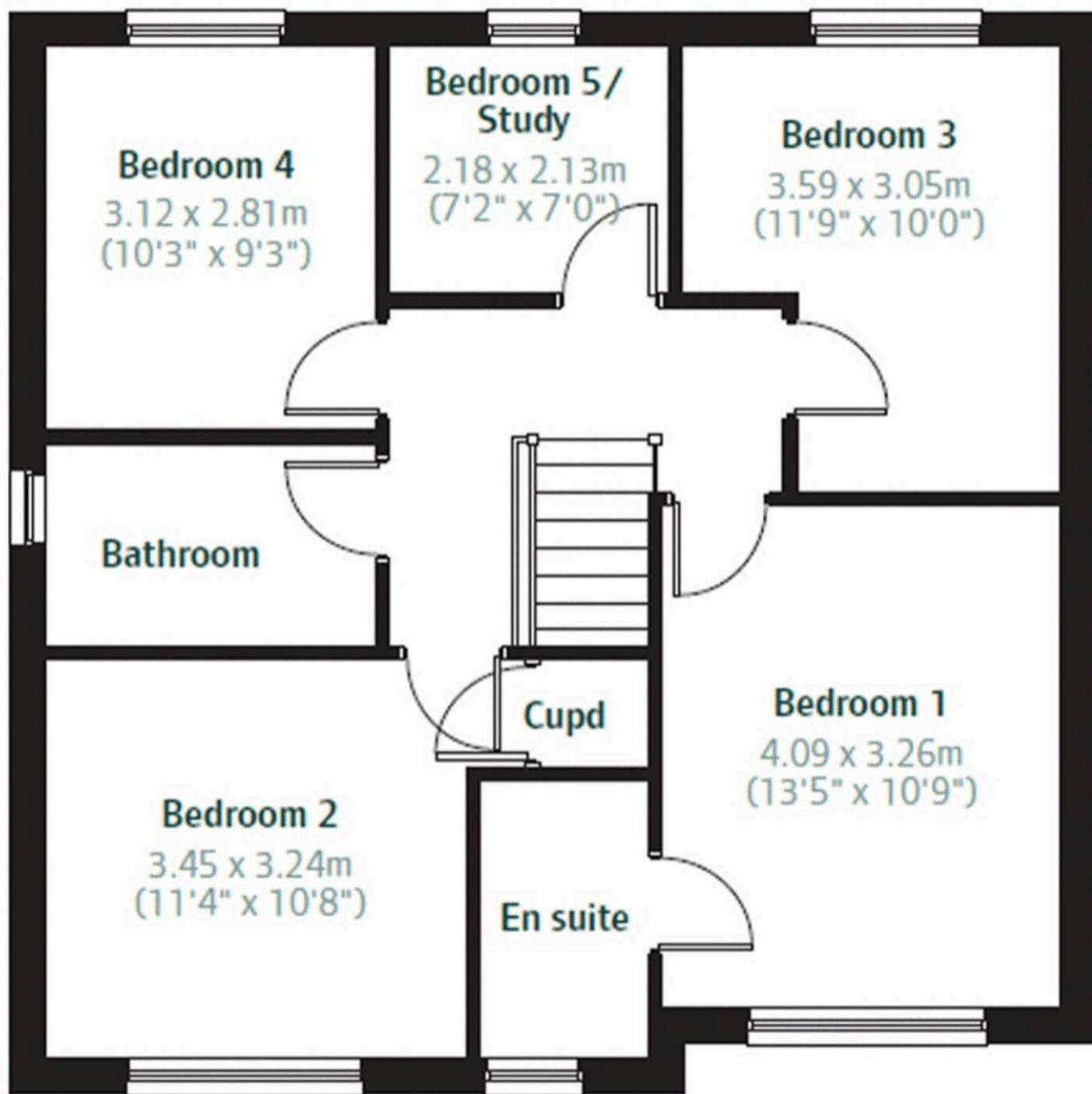
## Nickerson Close, Ormesby

Step inside this beautifully presented modern detached home and discover a space where light, style, and practicality come together. The entrance hall sets the tone with its light wood-style flooring that flows through much of the ground floor, creating a bright and inviting first impression.

The living room sits at the front of the home, offering a calm, comfortable setting with a large window that fills the space with natural light. Its neutral décor makes it the perfect spot to unwind or gather as a family.

At the rear, the open-plan kitchen and dining area form the centrepiece of the home, designed for both everyday living and





You can include any text here. The text can be modified upon generating your brochure.



You can include any text here. The text can be modified upon generating your brochure.

