



4 Kilburn Drive, Coventry - CV5 8NN

In Excess of £210,000

Williams
BINCH

4 Kilburn Drive

Coventry, Coventry

Charming 2-bed home with lounge/diner, French doors to garden, shaker kitchen, modern bathroom. Rear garden, drive, garage, gas central heating, double glazing, no chain. Move in ready, don't miss out - make it yours! EPC TBC.

Council Tax band: A

Tenure: Freehold

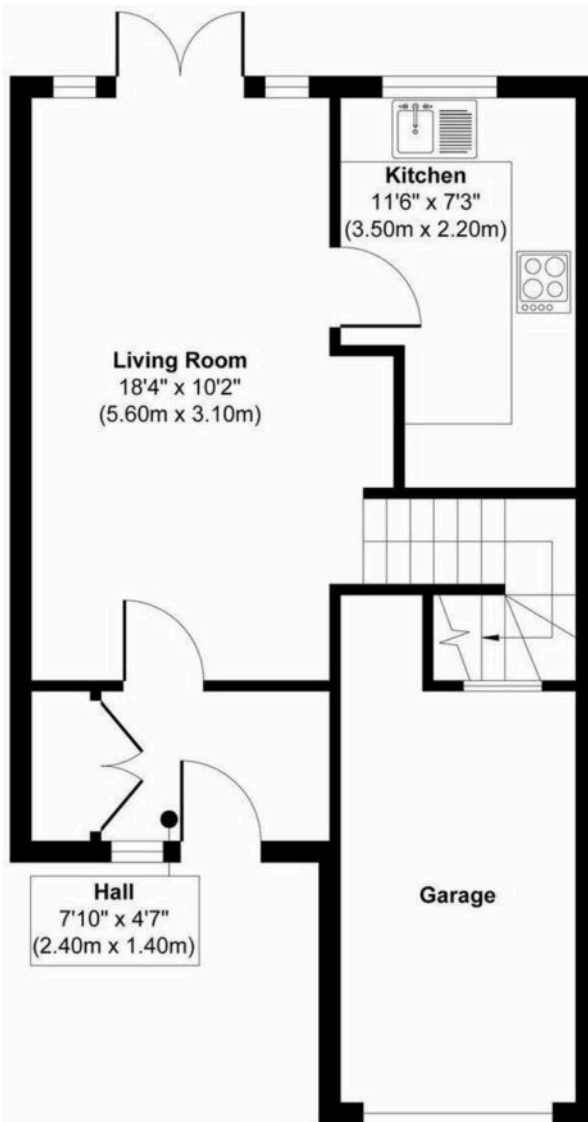
EPC Energy Efficiency Rating: D

EPC Environmental Impact Rating: D

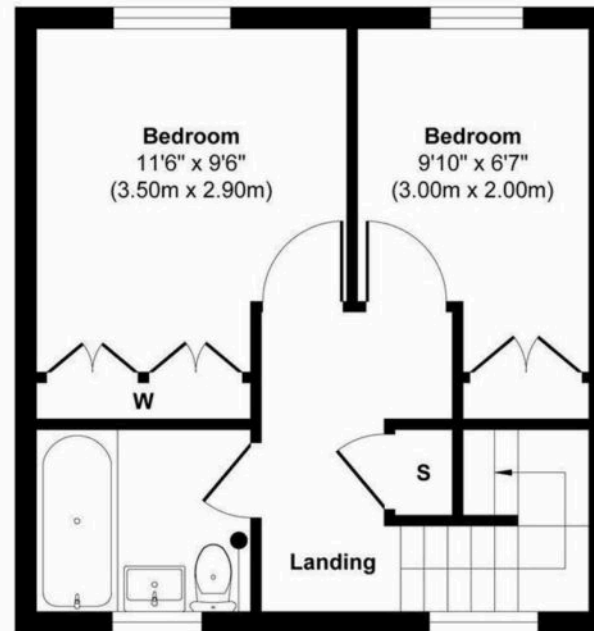
- Superb First Time Purchase
- Lovely Quiet Cul-De-Sac Location
- 2 Bedrooms
- Lounge / Diner With French Doors To Rear Garden
- Fitted Shaker Style Kitchen
- Modern Bathroom
- Delightful Rear Garden, Drive To Front With Garage
- Modern Gas Central Heating - Double Glazing
- No Chain
- EPC TBC







Ground Floor
Approximate Floor Area
333 sq. ft
(31.02 sq. m)



First Floor
Approximate Floor Area
302 sq. ft
(28.13 sq. m)

Approx. Gross Internal Floor Area 635 sq. ft / 59.15 sq. m

Illustration for identification purposes only, measurements are approximate, not to scale.

Produced by Elements Property