

8 Larksfield, Musley Hill

£230,000 Leasehold

First Floor 1 Bedroom Maisonette • Chain Free • Long Lease • Good Storage Including Loft Space • Reasonable Service Charge • Allocated Parking • Own Garden • Less Than a Mile to Ware Town/ Train Station



Entrance Lobby/ Stairs the First Floor

Lounge

Kitchen

7' 6" x 5' 11" (2.29m x 1.80m)

Bedroom

11' 9" x 9' 9" (3.58m x 2.97m)

Bathroom





Keith Ian are delighted to offer for sale this first floor maisonette located with a mile of Ware high street/ Ware train station.

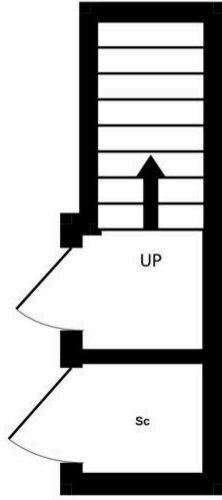
Council Tax band: B

Tenure: Leasehold

EPC Energy Efficiency Rating: C

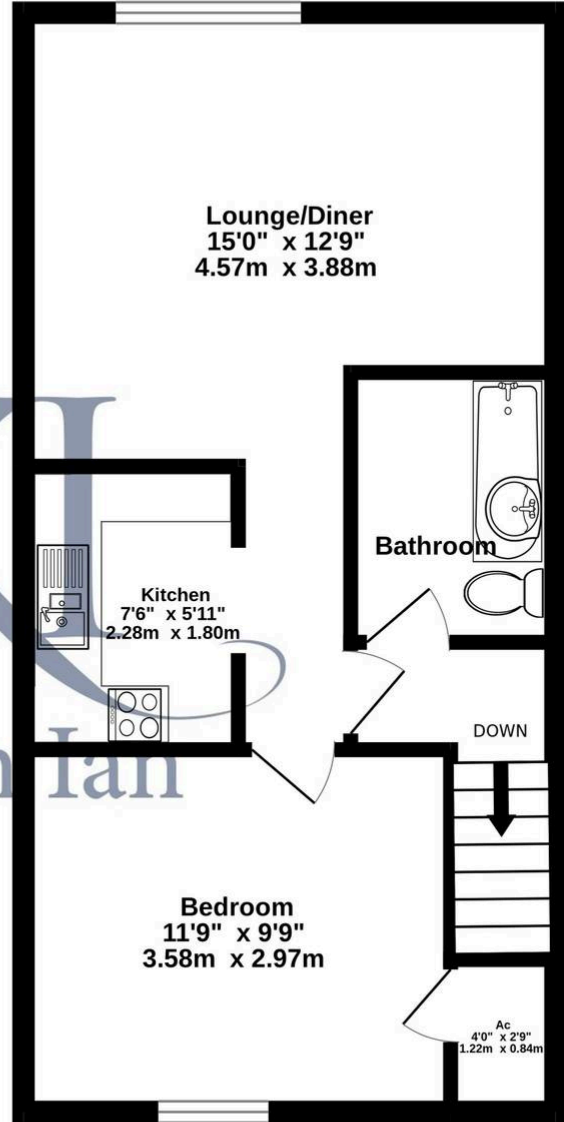
EPC Environmental Impact Rating: D

Entrance Floor
43 sq.ft. (4.0 sq.m.) approx.



First Floor
404 sq.ft. (37.5 sq.m.) approx.

Keith Ian



TOTAL FLOOR AREA : 447 sq.ft. (41.5 sq.m.) approx.

Whilst every attempt has been made to ensure the accuracy of the floorplan contained here, measurements of doors, windows, rooms and any other items are approximate and no responsibility is taken for any error, omission or mis-statement. This plan is for illustrative purposes only and should be used as such by any prospective purchaser. The services, systems and appliances shown have not been tested and no guarantee as to their operability or efficiency can be given.
Made with Metropix ©2025

You can include any text here. The text can be modified upon generating your brochure.