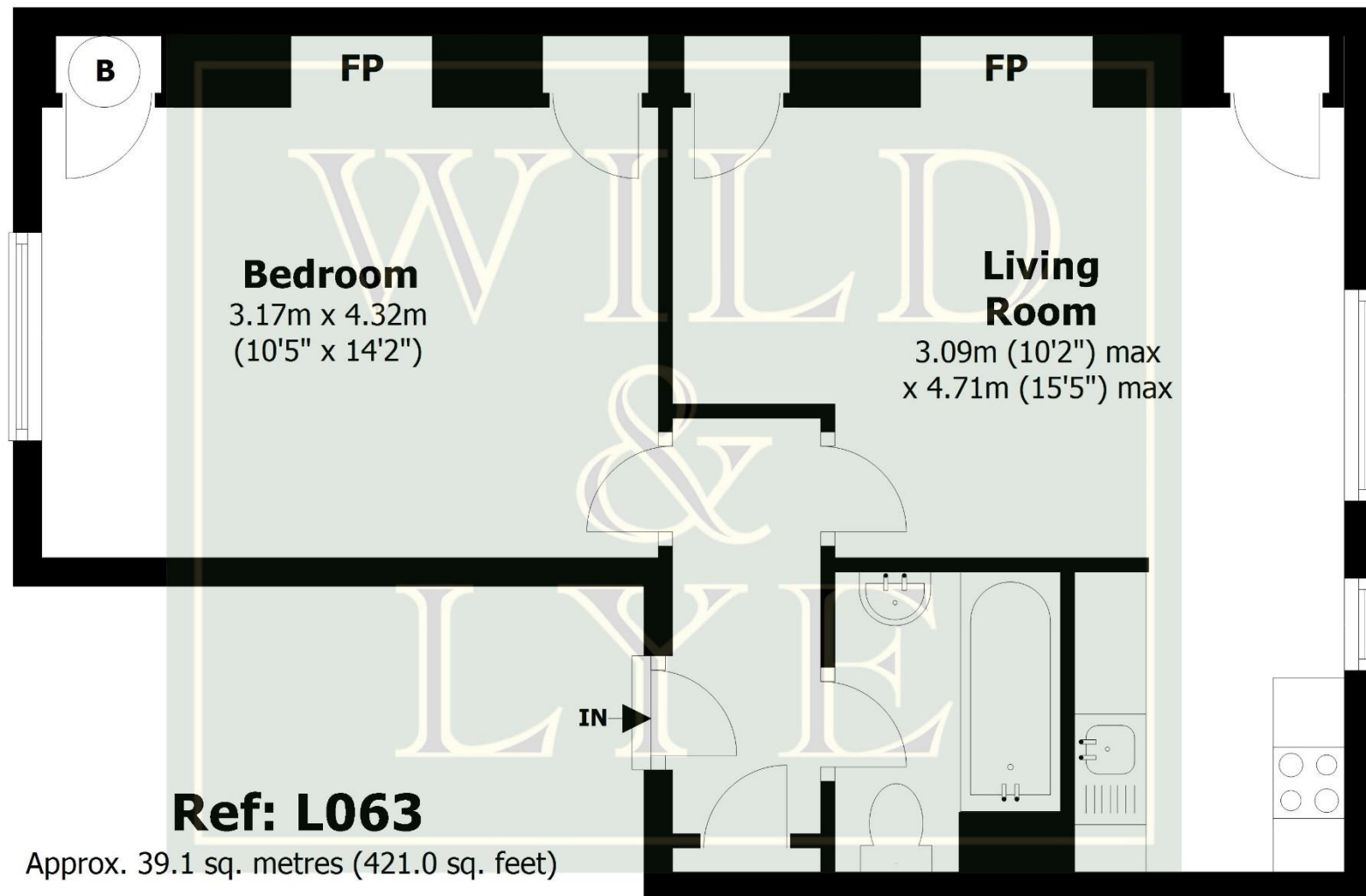




Second Floor Apartment, 43 Bathwick Street, Bath BA2 6PA  
**To Let** - £995 pcm

Light and spacious one double bedroom unfurnished apartment with relaxing suburban views from the second floor in this classic Georgian townhouse. From here it's just a short walk to the city centre to enjoy everything that Bath has to offer.





Important Notice 1. Particulars: These particulars are not an offer or contract, nor part of one. You should not rely on statements by Wild & Lye in the particulars or by word of mouth or in writing ("information") as being factually accurate about the property, its condition or its value. Neither Wild & Lye nor any joint agent has any authority to make any representations about the property, and accordingly any information given is entirely without responsibility on the part of the agents, seller(s) or lessor(s). 2. Photos etc: The photographs show only certain parts of the property as they appeared at the time they were taken. Areas, measurements and distances given are approximate only. 3. Regulations etc: Any reference to alterations to, or use of, any part of the property does not mean that any necessary planning, building regulations or other consent has been obtained. A buyer or lessee must find out by inspection or in other ways that these matters have been properly dealt with and that all information is correct.

Viewing by appointment with Wild & Lye ♦ 01225 443322 ♦ [www.wildandlye.com](http://www.wildandlye.com)



Gas central heating | Kitchen with built-in hob, oven, fridge and washing machine | Secondary glazed sash windows front and rear | Bath with shower over | Permit Parking Zone 1 | Council Tax Band B



