



**Jones Lane**  
Hythe, Southampton  
**Asking Price Of £220,000**



- MODERN FIRST FLOOR APARTMENT
- NO FORWARD CHAIN
- 2 BEDROOMS
- SPACIOUS LOUNGE

**EPC Rating**

**B**





## Property Description

### ENTRANCE HALL

A solid wooden front door leads into a welcoming hallway, with access to all rooms, creating an easy and versatile living space. The hall has two generous storage cupboards, perfect for tidily stowing away everyday essentials. An intercom system adds security and convenience, ideal for modern living.

### LIVING ROOM 18' 0" x 11' 3" (5.49m x 3.43m)

A spacious living room, thoughtfully designed with both side and rear aspect windows fitted with venetian blinds.

Evenings are easily transformed into cinematic experiences with a fitted electric projector screen - perfect for entertaining family and friends. The room is finished with contemporary spot lights, adding a modern touch to the space and highlighting the room's impressive proportions.







#### KITCHEN 11' 6" x 7' 0" (3.51m x 2.13m)

The modern kitchen has a rear aspect window and there is vinyl tile effect flooring in black and grey. The oak effect base and wall units provide ample storage, and the eye-catching lime green metro splash back tiles add a modern touch. There is a stainless steel sink with a chrome mixer tap.

The kitchen is fitted with a built-in Bosch oven, hob, and extractor, and space is provided for both a dishwasher and washing machine, as well as a fridge freezer. Underlighting beneath the wall cupboards creates an inviting atmosphere, and a part-glazed door connects seamlessly to the spacious living room.



#### BEDROOM ONE 14' 0" x 9' 0" (4.27m x 2.74m)

This spacious bedroom has ample room for a bed and bedroom furniture. There is a modern grey carpet, generous full-height built-in double wardrobes, and tasteful spot lighting enhances the light, airy feel of the space.

A side aspect window allows natural light to flood in, creating a bright and tranquil atmosphere throughout.

#### BEDROOM TWO 14' 0" x 7' 0" (4.27m x 2.13m)

This inviting space provides ample room for a bed and additional furniture, complemented by the convenience of a built-in wardrobe. Decorated in soft, modern tones, the room is finished with a stylish grey carpet and benefits from a side aspect window that welcomes in natural light.



#### BATHROOM 7' 0" x 7' 0" (2.13m x 2.13m)

A modern bathroom, with grey ceramic floor tiles and a modern white suite, including a WC, basin and bath. There is a recess shelf with a grey worktop and dark grey wall tiles. There is a mains shower over the bath, heated towel rail, spotlights, an extractor fan, and a shaver point.

#### OUTSIDE OF PROPERTY

Outside the property there is bin store and a convenient and secure bike store. The apartment has it's own allocated car parking space and there are additional visitor spaces for guests.



#### PROPERTY INFORMATION

Offered with NO FORWARD CHAIN.

A lovely first floor apartment in the charming market town of Hythe. Boasting gas central heating, UPVC double glazing, and an intercom entry system for added security, this property is not only well-maintained and decorated throughout but also offers modern fittings in both the kitchen and bathroom.



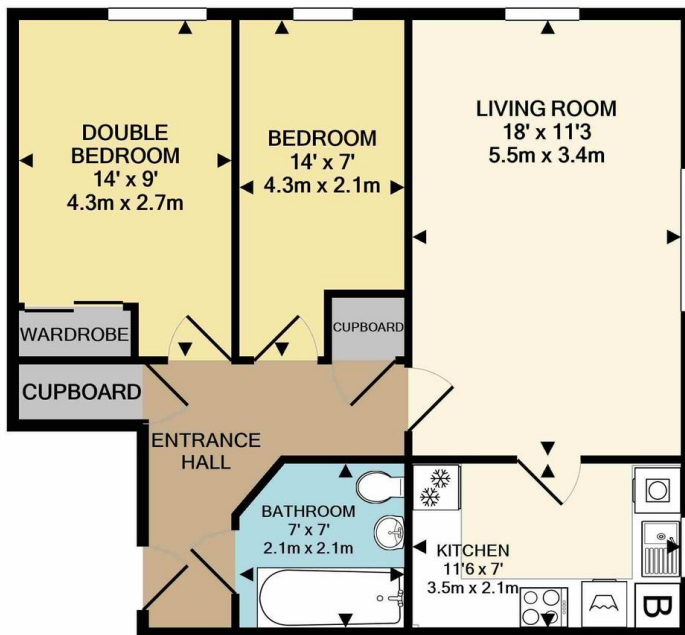
With good storage space and plenty of natural light, this first floor apartment provides a bright and spacious living environment for its lucky new occupants. The EPC rating of B ensures energy efficiency, while the NFDC council tax band A keeps living costs manageable.

The monthly service charge is £149.09.

#### AREA INFORMATION

This lovely apartment is just a short walk away from the centre of Hythe, giving the the convenience of supermarkets, a post office, independent shops, and restaurants, while also boasting good bus routes and transport links for easy commuting. Hythe also boasts a waterfront promenade, with views of Southampton Water, and there are lovely parks to enjoy.

For nature lovers and outdoor enthusiasts, the New Forest National Park and the nearby beaches at Lepe and Calshot are just a short drive away. Explore the stunning landscapes, enjoy scenic walks or partake in a variety of outdoor activities. Hythe has good transport links to Southampton & beyond.



Hotspur House  
Prospect Place  
Hythe  
Southampton  
Hampshire  
SO45 3AH

[www.hytheandwaterside.com](http://www.hytheandwaterside.com)  
[darren@hytheandwaterside.com](mailto:darren@hytheandwaterside.com)  
0238 0845 434

Agents Note: Whilst every care has been taken to prepare these sales particulars, they are for guidance purposes only. All measurements are approximate are for general guidance purposes only and whilst every care has been taken to ensure their accuracy, they should not be relied upon and potential buyers are advised to recheck the measurements