



Flat 111, Aylesdene Court Osborne Road, Coventry – CV5 6SB
£145,000

Flat 111

Aylesdene Court Osborne Road, Coventry

Ground floor retirement apartment in Earlsdon with stunning lounge/diner, impressive kitchen, beautiful shower room, 2 bedrooms, communal garden, warden control, private parking, and no chain – book a viewing today for stress-free living in Earlsdon!

Council Tax band: B

Tenure: Leasehold

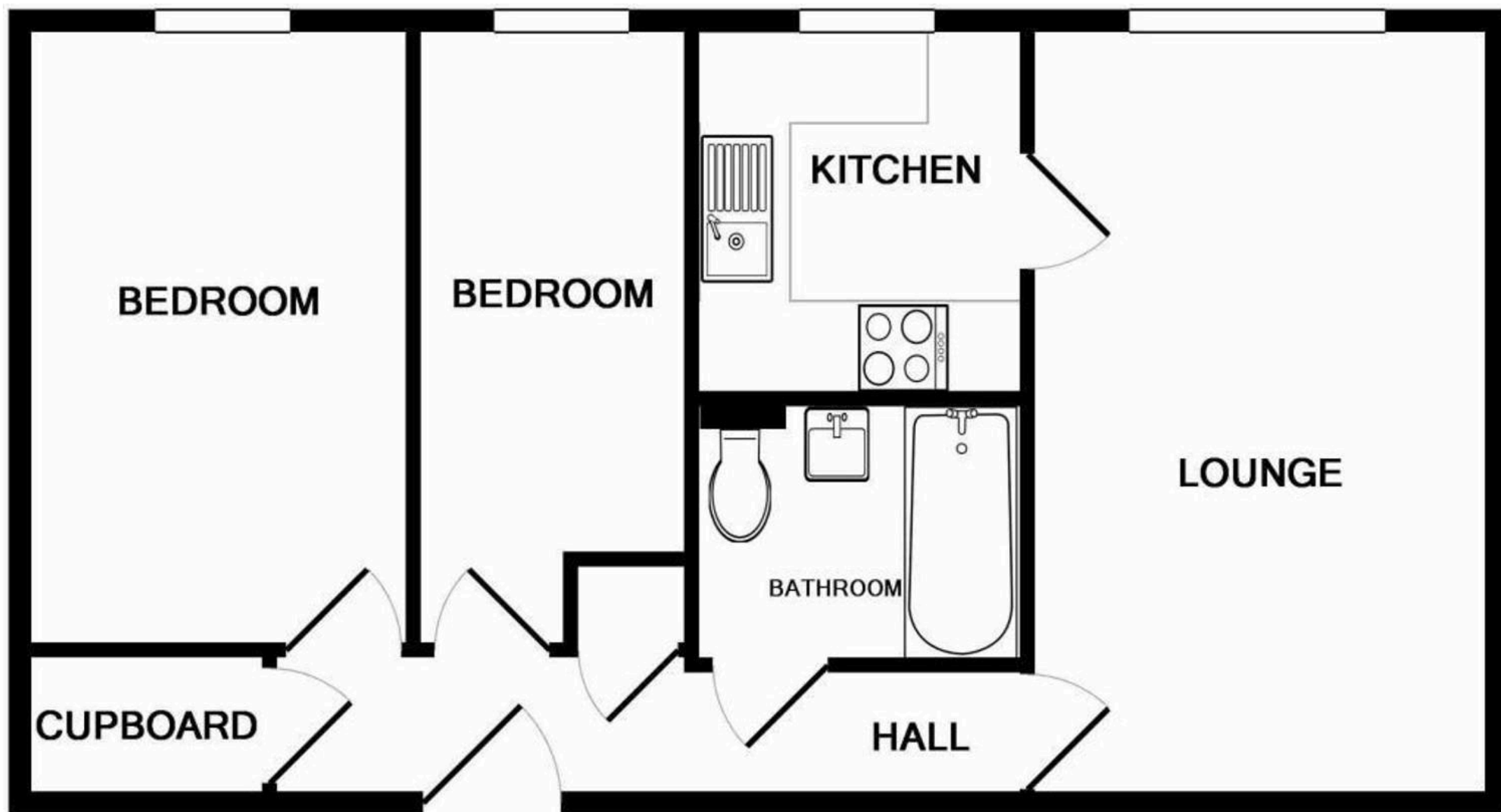
EPC Energy Efficiency Rating: E

EPC Environmental Impact Rating: F

- **Absolutely Beautiful Ground Floor Retirement Apartment**
- **Set In The Heart Of Earlsdon**
- **Stunning Lounge / Diner**
- **Outstanding Kitchen**
- **Beautiful Shower Room**
- **2 Bedrooms**
- **Delightful Communal Garden**
- **Warden Controlled**
- **Private Parking**
- **EPC TBC & No Chain**







TOTAL APPROX FLOOR AREA 542 SQ FT (50.3 SQ M)
Made with Metropix ©2017