



# ROYAL HOUSE

Historic meets luxury—eight distinctive apartments in the heart of Leicester

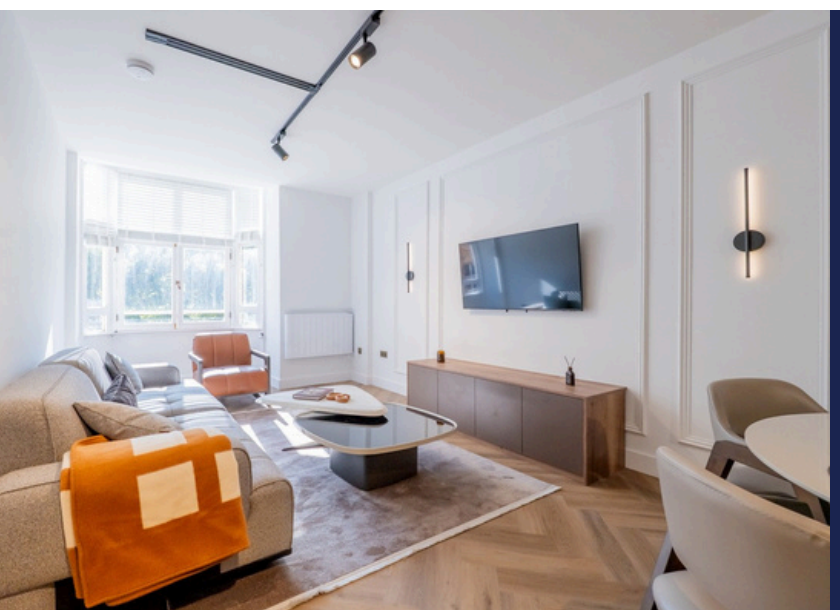




# A Landmark Reimagined



Welcome to a rare offering in Leicester: We have transformed a historic building into eight exclusive luxury apartments, crafted with unparalleled attention to detail and a design sensibility unlike anything the city has seen before.



Here, heritage meets modern living



Luxury bespoke furniture

High ceilings, generous windows, and abundant natural light

Premium finishes: herringbone floors, stone surfaces, bespoke joinery, premium sanitaryware, bespoke floor to ceiling kitchens and wardrobes

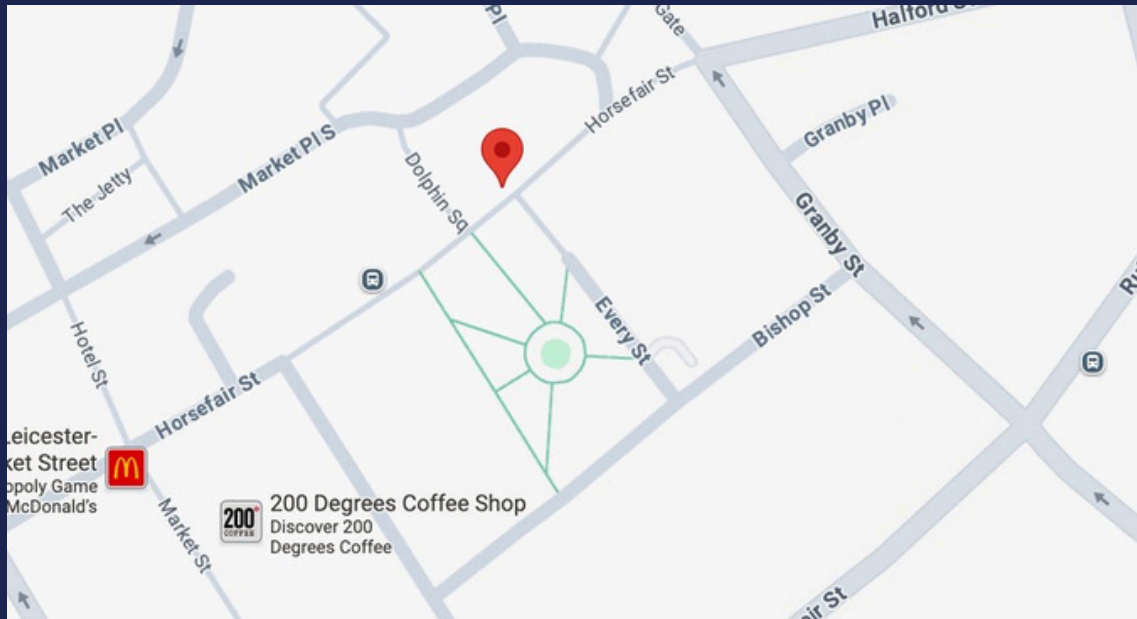
Open-plan layouts offer fluid movement between living, dining, and work zones

Whether entertaining or working from home, these apartments adapt to your lifestyle — not the other way around.





# ADDRESS & LOCATION

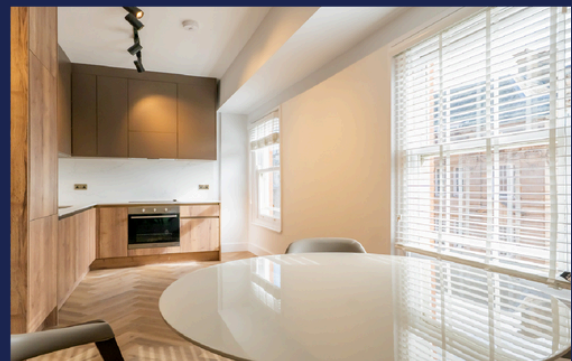
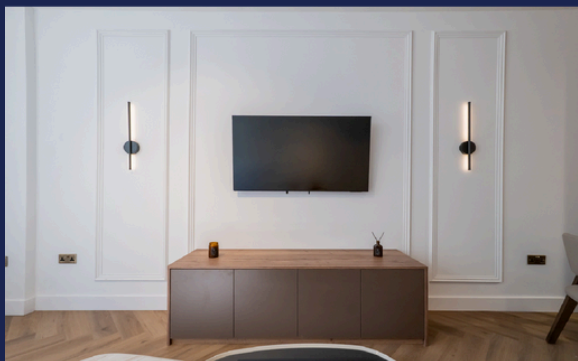


LOCATED ON HORSEFAIR STREET, LEICESTER,  
EVERYTHING AT YOUR FINGERTIPS.



This project enjoys the convenience and vibrancy of city life combined with moments of tranquility. Walk to cafés, cultural venues, parks, and transport links - including a 10 minute walk to Leicester Train Station

AVAILABLE FOR RENT  
PRICES STARTING FROM £1,025



MARKETED BY



SALES • LETTINGS • MANAGEMENT

CALL 011 650 76351 FOR MORE  
INFORMATION AND VIEWINGS