



Cunningham Park, Harrow, HA1 4QH

Guide Price £675,000 | Freehold



LAWRENCE RAND



Key Features & Description:

- Exquisite three bedroom detached home in a peaceful residential location
- Spacious open plan living area with abundant natural light
- Modern, well appointed kitchen with sleek worktops, premium appliances, and breakfast bar
- Luxurious master suite with walk-in wardrobe and pristine ensuite
- Chain free
- Contemporary family bathroom finished to a high standard

Nestled in a tranquil neighbourhood, this exquisite three bedroom detached home beautifully blends modern comfort with timeless elegance. Upon entering the inviting foyer, you're welcomed by a warm and sophisticated ambience that flows throughout the home. The generously sized living room, filled with natural light, offers a comfortable and versatile space for both relaxation and entertaining. Adjacent to this, the beautifully appointed kitchen features sleek worktops, premium appliances, and a stylish breakfast bar perfect for everyday dining and culinary creativity. Upstairs, three well proportioned bedrooms provide comfort and flexibility. The master bedroom offers a peaceful retreat with ample storage, while the additional bedrooms are generously sized, ideal for children, guests, or a home office. A contemporary family bathroom serves all bedrooms, finished to a high standard. The property's appeal extends beyond its interiors. ***Presented with care by Lawrence Rand—helping you find the place you'll love to call home.***



Verified Material information:

Council Tax Band: E

Local Authority: London Borough of Harrow

EPC Rating: D

Suppliers:

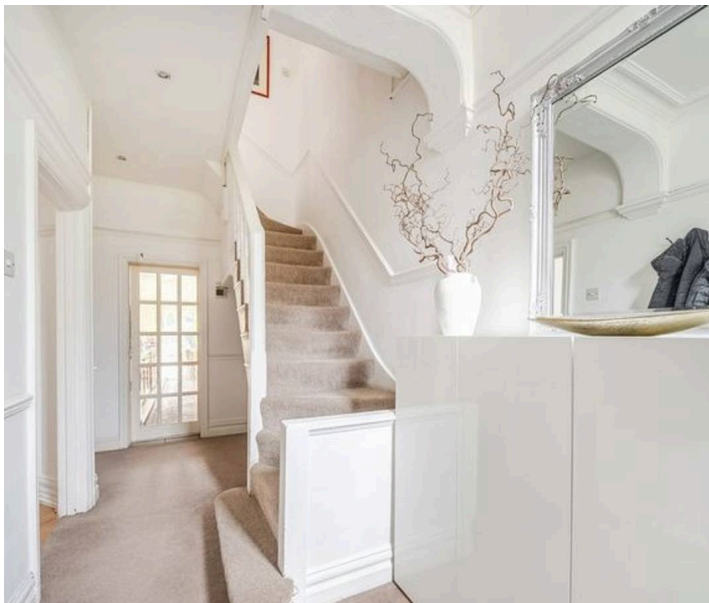
Electricity supply: Mains, Water supply:

Mains water, Sewerage: Mains

Heating: Gas central heating

Broadband & mobile coverage:

Broadband: FTTP (Fibre to the Premises)

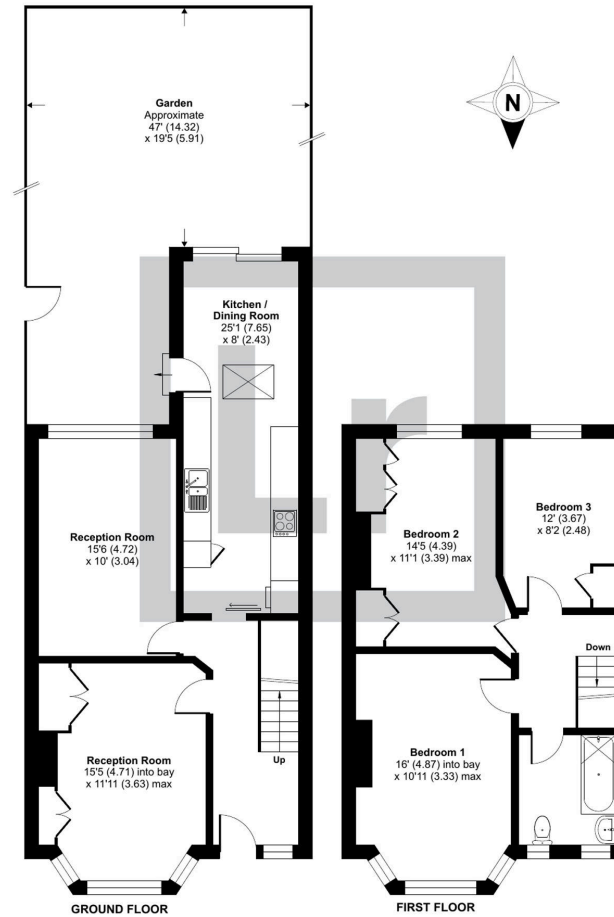




Cunningham Park, Harrow, HA1

Approximate Area = 1211 sq ft / 112.5 sq m

For identification only - Not to scale



Floor plan produced in accordance with RICS Property Measurement 2nd Edition, Incorporating International Property Measurement Standards (IPMS2 Residential). © nichecom 2025. Produced for Lawrence Rand. REF: 1383355

Lawrence Rand

51 Victoria Road, Ruislip - HA4 9BH

01895 632211

Sales@lawrence-rand.co.uk

www.lawrence-rand.co.uk

Lawrence Rand Limited has made every reasonable effort to ensure the accuracy of the information provided. However, we accept no responsibility for errors, omissions, or misstatements. All measurements, distances, and descriptions are approximate and for guidance only. Prospective purchasers or tenants must verify all details independently. Some images may include AI-generated virtual staging to illustrate the potential of the property and are for visual guidance only. No warranty is given or implied, and these particulars do not form part of any offer or contract. Lawrence Rand reserves the right to amend or withdraw any property without notice.