

TO LET



Shemilt Crescent, Bradeley, Stoke-On-Trent

3 Bedrooms, 1 Bathroom, Detached House

£975 pcm



Shemilt Crescent, Bradeley, Stoke-On-Trent

Detached House,
3 bedroom, 1 bathroom

£975 pcm

Date available: 13th December 2025

Deposit: £1,125

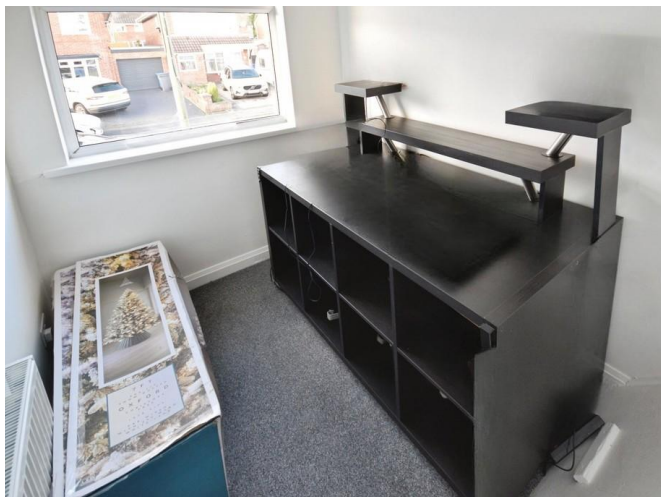
Unfurnished

Council Tax band: C

- Off-Road Parking
- Open Plan kitchen & Diner
- Spacious Lounge
- Upstairs Bathroom
- Two Double Bedrooms
- Council Tax Band C
- Close To Bus Routes

Martin & Co are delighted to present this charming three-bedroom detached home, ideally situated in the popular area of Bradeley, Stoke-on-Trent. This property features an inviting open-plan kitchen and dining area, a generously sized living room, two spacious double bedrooms and a small single bedroom, along with a well-appointed family bathroom. Externally, the home boasts a large, well-maintained garden and the added benefit of off-road parking.

Energy Efficiency Rating		
	Current	Potential
Very energy efficient - lower running costs		
(92+) A		
(81-91) B		84
(69-80) C	70	
(55-68) D		
(39-54) E		
(21-38) F		



Martin & Co Stoke on Trent

12 Albion Street • Stoke-On-Trent • ST1 1QH

T: 01782 262880 • E: stokeontrent@martinco.com <http://www.martinco.com>

01782 262880



Accuracy: References to the Tenure of a Property are based on information supplied by the Seller. The Agent has not had sight of the title documents. A Buyer is advised to obtain verification from their Solicitor. Items shown in photographs including but not limited to carpets, fixtures and fittings are not included unless specifically mentioned within the sales particulars. They may however be available by separate negotiation. Buyers must check the availability of any property and make an appointment to view before embarking on any journey to see a property. No person in the employment of the agent has any authority to make any representation about the property, and accordingly any information given is entirely without responsibility on the part of the agents, sellers(s) or lessors(s). Any property particulars are not an offer or contract, nor for part of one. **Sonic / laser Tape:** Measurements taken using a sonic / laser tape measure may be subject to a small margin of error. **All Measurements:** All Measurements are Approximate. **Services Not tested:** The Agent has not tested any apparatus, equipment, fixtures and fittings or services and so cannot verify that they are in working order or fit for the purpose. A Buyer is advised to obtain verification from their Solicitor or Surveyor.