



Cheena Court Solario Road, Costessey - NR8 5EP



Cheena Court

Solario Road, Norwich

IDEAL FOR SHARERS. This SIZEABLE first floor APARTMENT offers a BALCONY with VIEWS over the school playing field, whilst being LARGER THAN AVERAGE, with a hall entrance an OPEN PLAN LIVING SPACE. ALLOCATED and VISITOR PARKING can be found to the front of the building, with COMMUNAL STAIRS leading to the entrance. Once inside, the HALL leads to TWO DOUBLE BEDROOMS, one with an EN SUITE SHOWER ROOM, and the other serviced by the FAMILY BATHROOM - IDEAL FOR SHARERS. The SITTING ROOM offers space for SOFT FURNISHINGS and DINING, with FRENCH DOORS to the balcony, and an open plan aspect to the KITCHEN with a built-in over and hob, and SPACE for APPLIANCES.



Council Tax band: B

Tenure: Leasehold

EPC Energy Efficiency Rating: C

- First Floor Apartment
- Larger than Average
- Open Plan Living
- Fitted Kitchen
- Two Double Bedrooms
- En Suite & Family Bathroom
- Balcony with Playing Field Views
- Allocated Parking

The development of Queens Hill is located on the fringes of Costessey. Local schooling is located within walking distance, and a regular bus link into Norwich City centre is provided. The nearby Longwater Retail Park offers a fantastic range of shops and a supermarket, whilst the A47 leads to Norwich and the A11.



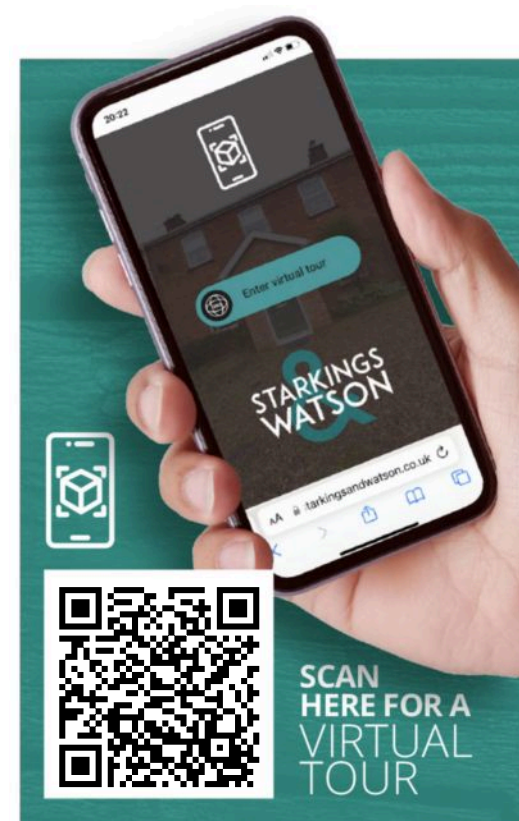
SETTING THE SCENE

The property is accessed via a communal car park, with a numbered parking space and communal entrance with an entry telecom system.

FIND US

Postcode : NR8 5EP

What3Words : ///revival.paddlers.renewals



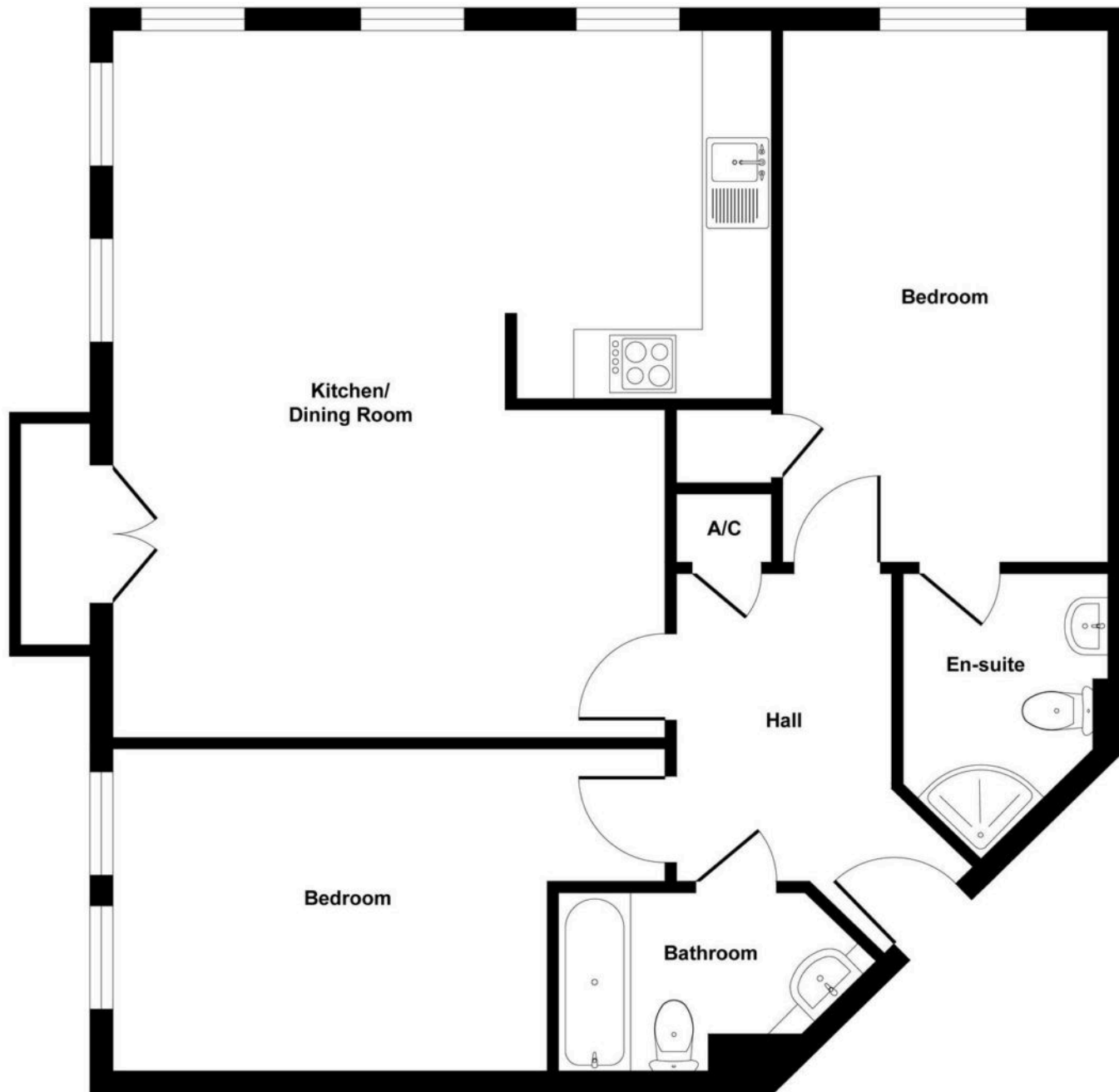




Balcony

Perfect for a bistro set, the balcony overlooks the local school playing field.





Floor Plan
Approximate Floor Area
821 sq. ft
(76.27 sq. m)

Approx. Gross Internal Floor Area 821 sq. ft / 76.27 sq. m



Starkings & Watson Hybrid Estate Agents

Roxburgh House, Rosebery Business Park Mentmore Way - NR14 7XP

01603 336226 • lettingteam@starkingsandwatson.co.uk • starkingsandwatson.co.uk/

Disclaimer: Whilst every care has been taken to prepare these sales particulars, they are for guidance purposes only. All measurements are approximate and are for general guidance purposes only and whilst every care has been taken to ensure their accuracy, they should not be relied upon and potential buyers are advised to recheck the measurements.