



Coulson Court, Prestwood

£1,050 pcm

First floor apartment close to village amenities, available January • One double bedroom and large lounge • Walking distance to mainline train system • Parking, garage in block and communal gardens



The Wye Partnership Great Missenden

36B High Street, Great Missenden - HP16 0AU

01494 864225 • lettingsgm@wyeres.co.uk • www.wyeres.co.uk/

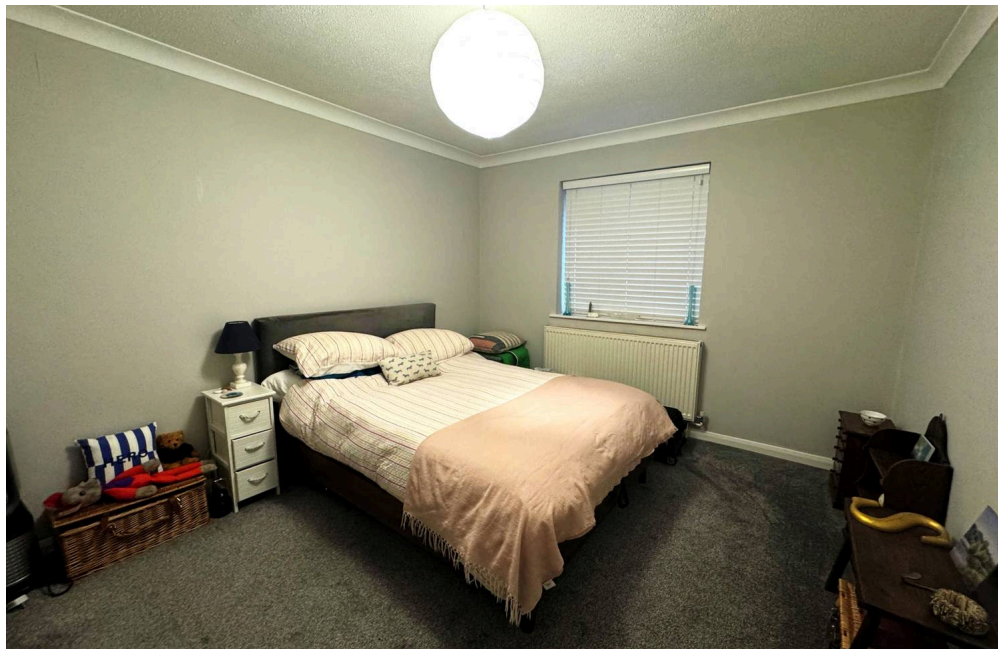
This one bedroom flat on the first floor is just a stone's throw away from the village amenities. This cosy apartment boasts a spacious double bedroom and a large lounge.

Available in January, on an unfurnished basis, this property offers the convenience of parking space, a garage in the nearby block and access to communal gardens.

Within walkable distance of the mainline train system, with Chiltern Railways trains direct into Marylebone. Plus, with an EPC rating of C and council tax band C, you'll enjoy energy efficiency and affordable taxes.

Don't miss out on this fantastic opportunity to make this lovely flat your new home.

Council Tax band: C EPC Rating: C



From our Prestwood office proceed along the high street towards Great Missenden. At the crossroads turn right into Nairdwood Lane and Coulson Court can be found 150m along on the left hand side.

