



The Totterells, Littleworth
£1,850 pcm



The Totterells

Littleworth, Pewsey

Delightful three bedroom property, rural location in the popular village of Littleworth. This detached property offers a spacious living room, kitchen utility / breakfast room with electric aga and hand built maple wood kitchen cabinets. The property offers light and spacious accommodation with one converted loft bedroom and two ground floor bedrooms, a generous sized bathroom /WC and a shower room/ WC next door.

There is a large enclosed rear and front garden (the lawns are maintained during the growing season) and stunning views over the Pewsey Vales, oil fuelled heating, electrical supply for hot water, off road parking, garage and storage shed. Pets considered. Paddocks available if required for an additional cost.

Council Tax Band: F (Wiltshire council website for current cost).

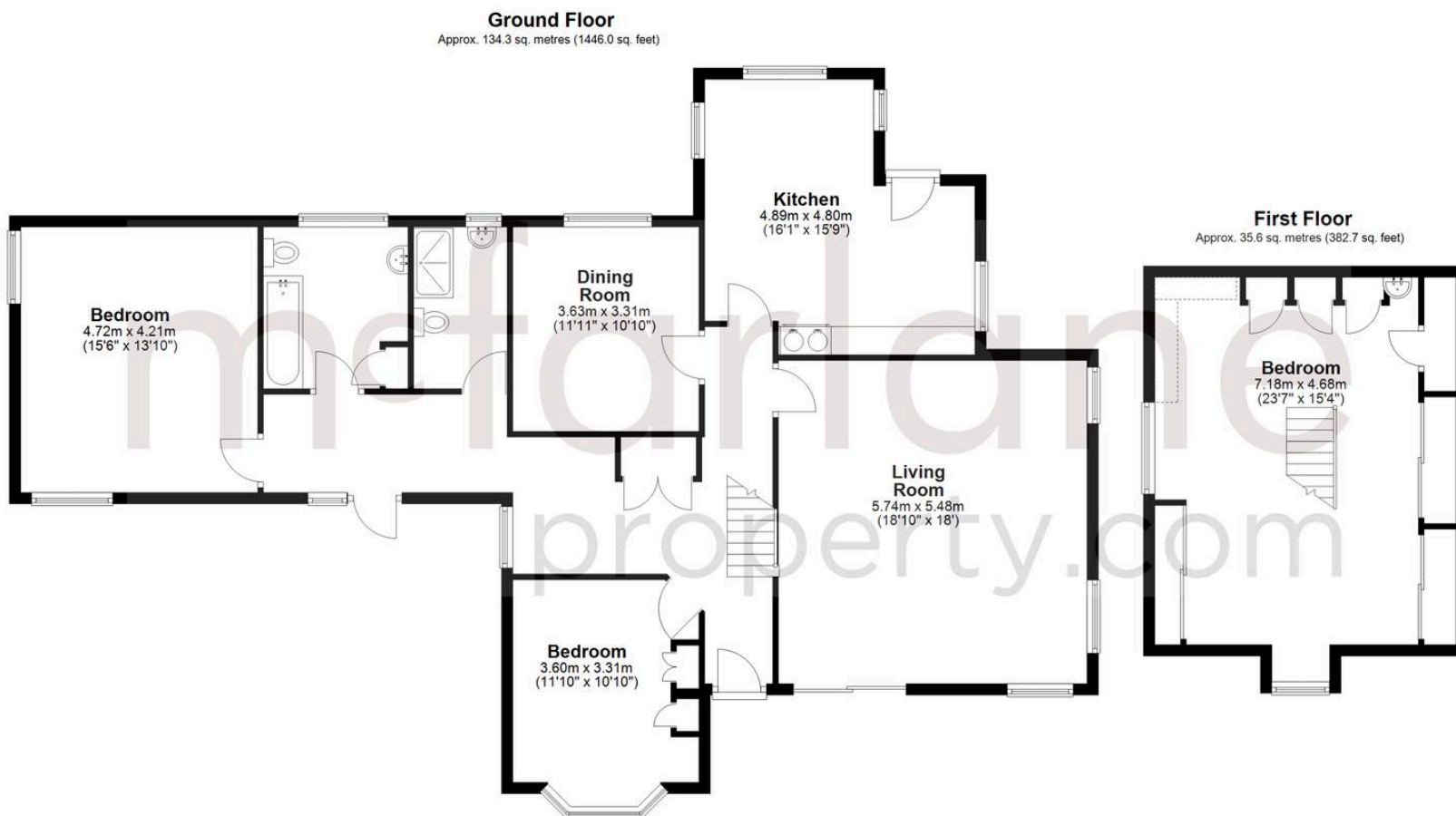
EPC: Ordered. Utility Services: Mains water, drainage, gas and electric.

Internet & Mobile: super fast broadband available

At a rent of £1850 per calendar month: Holding deposit of 1

week's rent £426.92, Security deposit of 5 weeks rent £2134.00





Total area: approx. 169.9 sq. metres (1828.7 sq. feet)

McFarlane Sales & Lettings

McFarlane Sales & Letting, 106 High Street – SN8 1LT

01672 514380 • marlborough@mcfarlaneproperty.com • www.mcfarlaneproperty.com/

mcfarlane
property.com