



22 Colwyn Court Asheldon Road, Torquay - TQ1 2QT
£300,000





22 Colwyn Court Asheldon Road

Torquay, Torquay

Stylish split-level Wellswood home with stunning south-facing outlooks, three bedrooms, contemporary open plan kitchen/diner, separate downstairs snug, off road parking and balcony and rear courtyard...

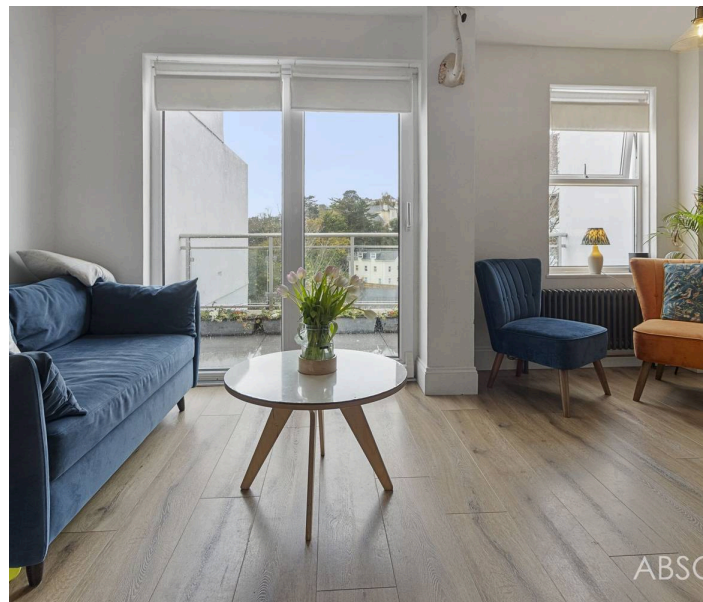
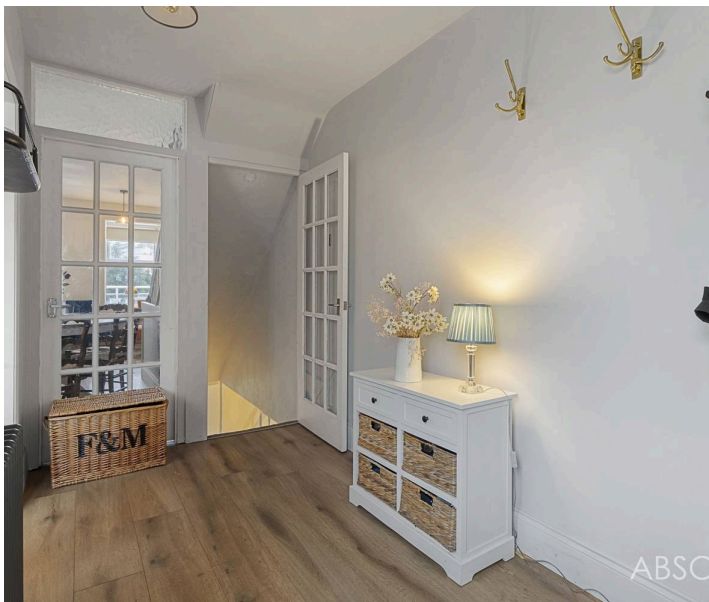
Council Tax band: C

Tenure: Freehold

EPC Energy Efficiency Rating: D

EPC Environmental Impact Rating: D

- Superb Wellswood Village location on sought-after Asheldon Road
- Short stroll to Anstey's Cove, Wellswood Green and Meadfoot Beach
- Stylish split-level layout arranged over three floors
- South-facing aspect with uninterrupted open outlooks
- Large open-plan living, dining and kitchen space opening to a balcony
- Two generous double bedrooms plus a versatile third bedroom on the garden level
- Contemporary bathroom in sleek monochrome design
- Cosy snug with panelling and built-in storage
- Landscaped rear garden ideal for relaxing and entertaining
- Driveway and carport providing off-road parking



22 Colwyn Court Asheldon Road

Torquay, Torquay

Wellswood is one of Torquay's most desirable locations, celebrated for its village-style community, elegant Victorian architecture, and proximity to both the coast and town. From 22 Colwyn Court, you can easily reach Meadfoot Beach, Anstey's Cove, and the woodland walks of Ilsham Valley, while Wellswood Village itself offers an exceptional lifestyle with its independent cafés, delis, boutiques, restaurants, and patisserie. The area is part of the renowned English Riviera, famed for its mild climate, palm-lined streets, and stunning coastal scenery – making it one of South Devon's most sought-after spots for families, professionals, and lifestyle-driven buyers alike.

Absolute Sales & Lettings

Absolute Sales & Lettings Ltd, 13 Ilsham Road – TQ1 2JG

01803 214214

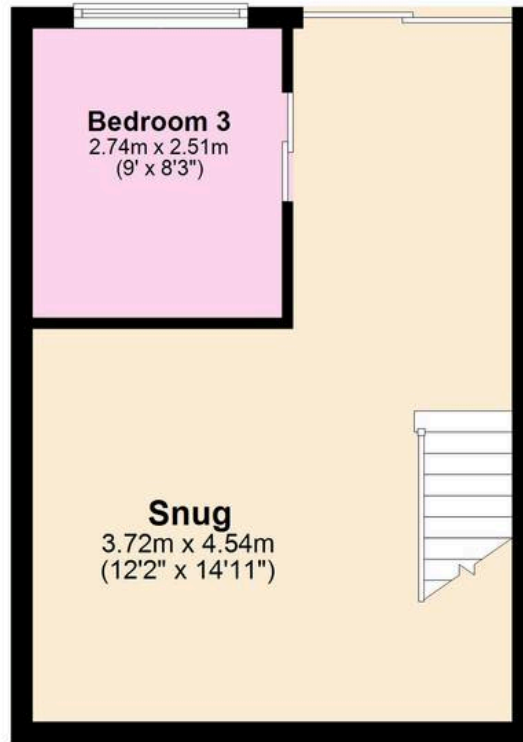
torquay@movewithabsolute.co.uk

movewithabsolute.co.uk/



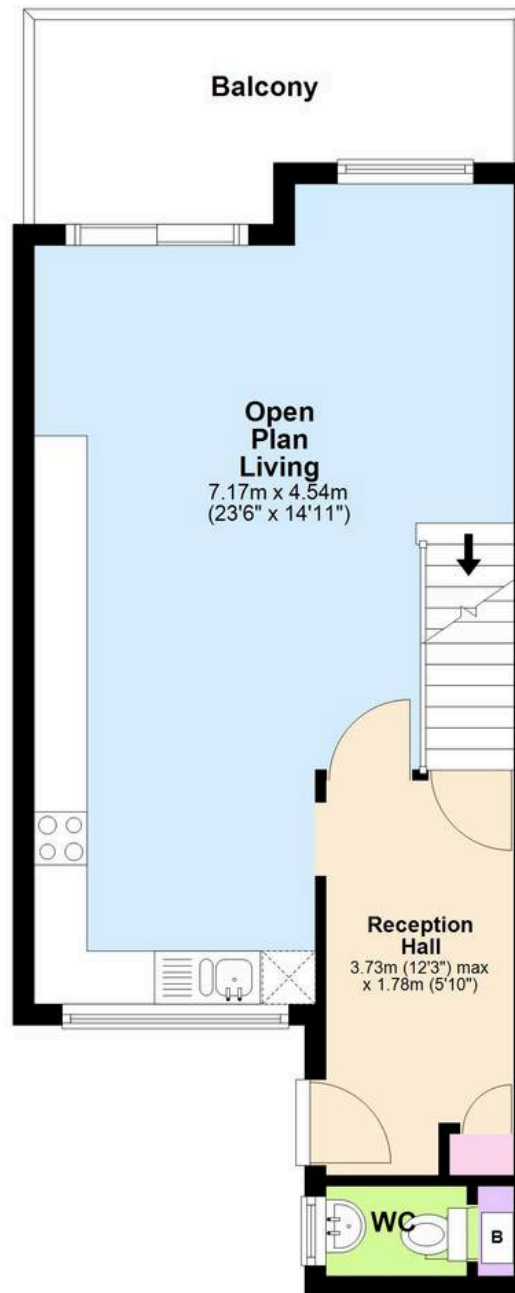
Garden Floor

Approx. 30.1 sq. metres (324.4 sq. feet)



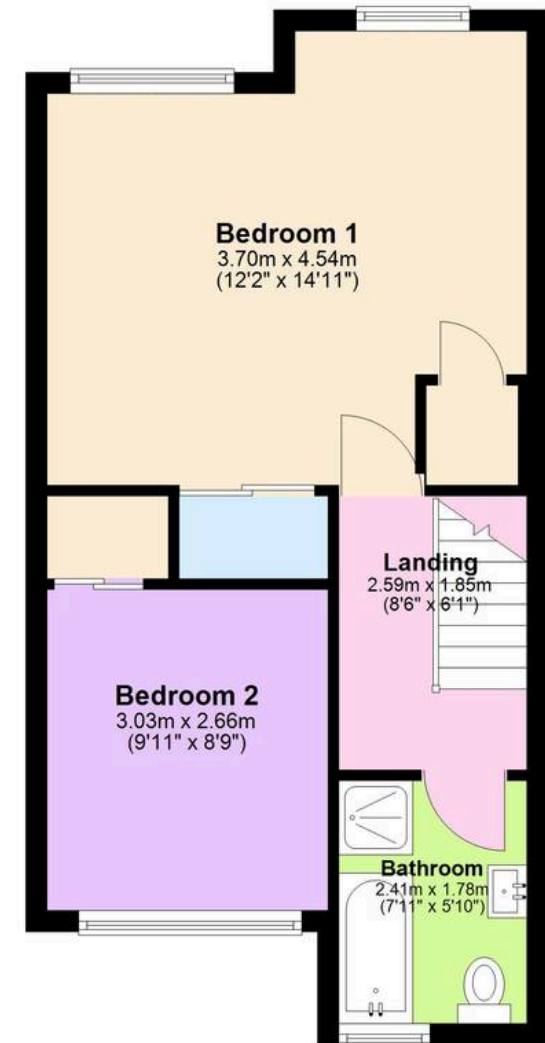
Ground Floor

Approx. 36.4 sq. metres (392.1 sq. feet)



First Floor

Approx. 37.3 sq. metres (401.1 sq. feet)



Total area: approx. 103.8 sq. metres (1117.6 sq. feet)

