



**Coopers**

**Coopers**

Allesley Old Road, Chapelfields, Coventry CV5 8DB

Guide Price £239,950





## Allesley Old Road

Chapelfields, Coventry

Incredibly spacious three bedroom semi detached home that just needs to be viewed. Very convenient location close to the City Centre and Earlsdon and offered for sale with no upward chain.

Council Tax band: C

Tenure: Freehold

EPC Energy Efficiency Rating: D

EPC Environmental Impact Rating: E

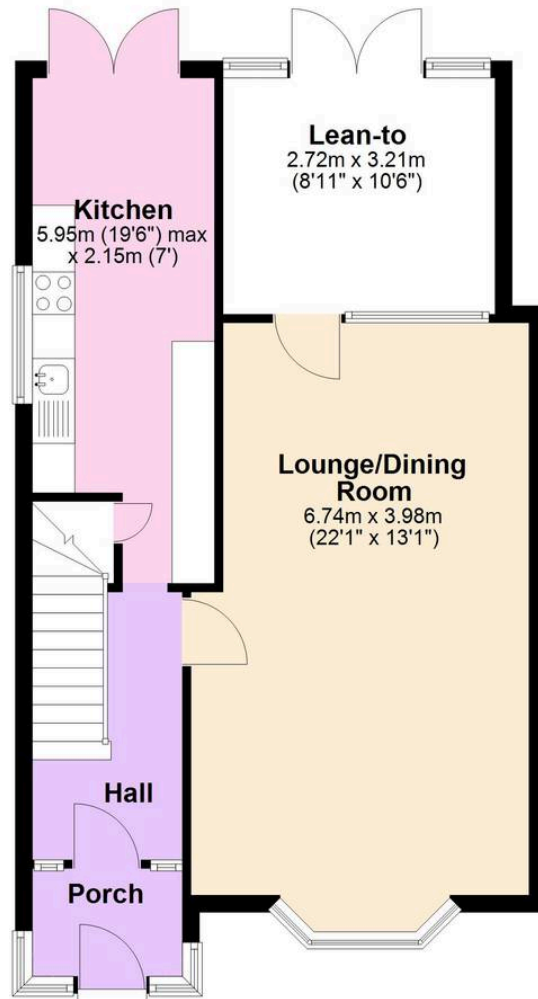
- Incredibly spacious family home
- Well proportioned living room, enlarged breakfast kitchen and leanto conservatory
- Three good sized bedrooms and bathroom
- Brick garage/store in neighbouring street
- Popular location close to Earlsdon and the City Centre
- Must be viewed! No upward chain.



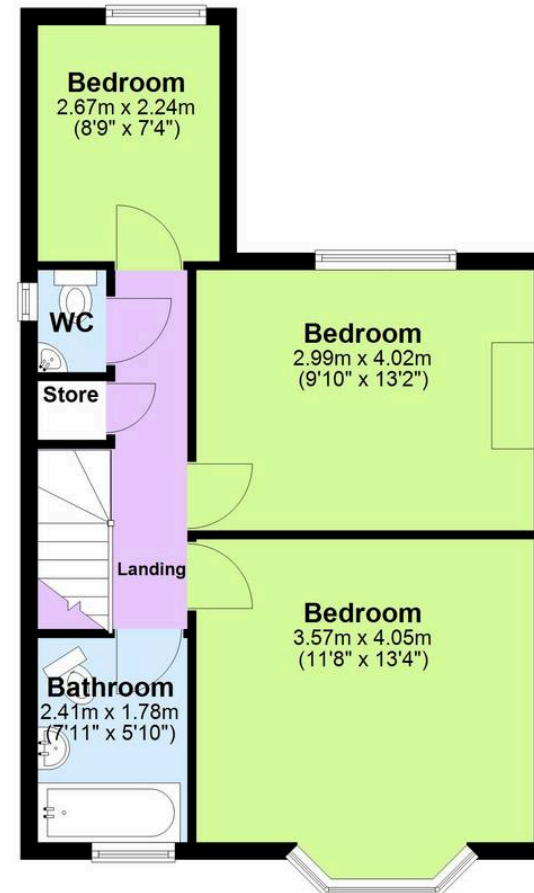




## Ground Floor



## First Floor



Total area: approx. 103.8 sq. metres (1116.9 sq. feet)

"Floor plan measurements are approximate and are for illustrative purposes only. While every effort is made to ensure accuracy, no responsibility is taken for any error, omission, or misstatement. Do not scale from this plan."

Plan produced using PlanUp.□□

**Coopers Estate Agents**

Coopers, 22 New Union Street – CV1 2HN

**Coopers**

024 7655 2841 • [sales@coopersestateagents.com](mailto:sales@coopersestateagents.com) • [www.coopersestateagents.com/](http://www.coopersestateagents.com/)

Coopers Chartered Surveyors Ltd, 22 New Union Street, Coventry, West Midlands

CV1 2HN, 024 7655 2841, [sales@coopers-cov.com](mailto:sales@coopers-cov.com). Company Registration

Number: 6725089 / VAT number: 940 3555 34