



17 Beaconsfield Romilly Road, Barry

Barry

Guide Price £145,000



17 Beaconsfield Romilly Road

Barry, Barry

Charming 2-bed maisonette in Westend Bristol with stunning Bristol Channel views. Well-appointed bedrooms, electric heating, double glazed windows. Convenient location near amenities. Lovely garden, communal grounds. Private car park. Ideal for small family or professionals.

Council Tax band: C

Tenure: Leasehold

EPC Energy Efficiency Rating: D

EPC Environmental Impact Rating:

- BRISTOL CHANNEL VIEWS
- TWO BEDROOMS
- GARDEN
- ELECTRIC HEATING
- DOUBLE GLAZED
- WESTEND LOCATION
- CLOSE TO LOCAL AMENITIES





Entrance Hall

Enter through Aluminium double glazed door. Obscure windows to both side and front. Door into :-

Kitchen/dining room

15' 0" x 8' 2" (4.57m x 2.48m)

Fitted carpet, window to front. Wall mounted electric heater. Open planned into the kitchen. Newly fitted vinyl flooring. A range of base and eye level units with complementing work surfaces. Inset single drainer stainless steel sink with mixer tap over. Built in double oven and electric hob with extractor over. Window to side. Three built in cupboards one with plumbing for washing machine and shelving.

Lounge

11' 6" x 14' 8" (3.51m x 4.47m)

Newly fitted carpet. Wall mounted heater. Sliding doors to front with vertical blind opening out to a good sized patio area with views across the waterfront and the Bristol Channel. Staircase rising to upper landing.



Landing

Newly fitted carpet, hand rail. Doors into :-

Bedroom One

9' 7" x 11' 9" (2.92m x 3.58m)

Newly fitted carpet, Wall mounted heater.

Double built in wardrobe. Window to the front.

Bedroom Two

8' 8" x 9' 3" (2.64m x 2.82m)

Newly fitted carpet. Wall mounted heater. Built in wardrobe. Window to front.

Bathroom

5' 4" x 10' 1" (1.63m x 3.07m)

Vinyl flooring, A three piece suite in white comprising of close coupled WC, wash hand basin inset into a vanity unit. Panelled bath with electric shower over and shower curtain. Window to side.

Garden.

Paved patio area mature shrubs and bushes. Views across the Bristol Channel.

Communal gardens.

Mature planting. Pathways.

Off street

1 Parking Space

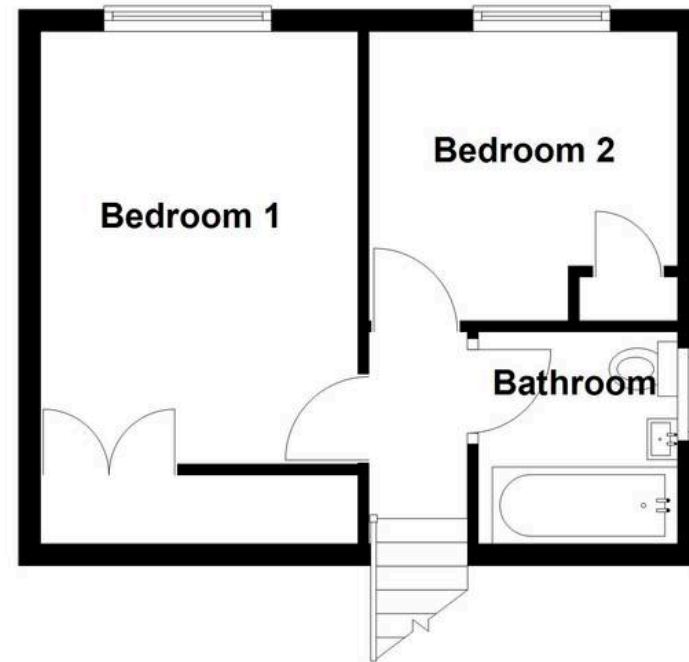
Parking is on a first come first serve basis. in a private carpark to the rear of the building.





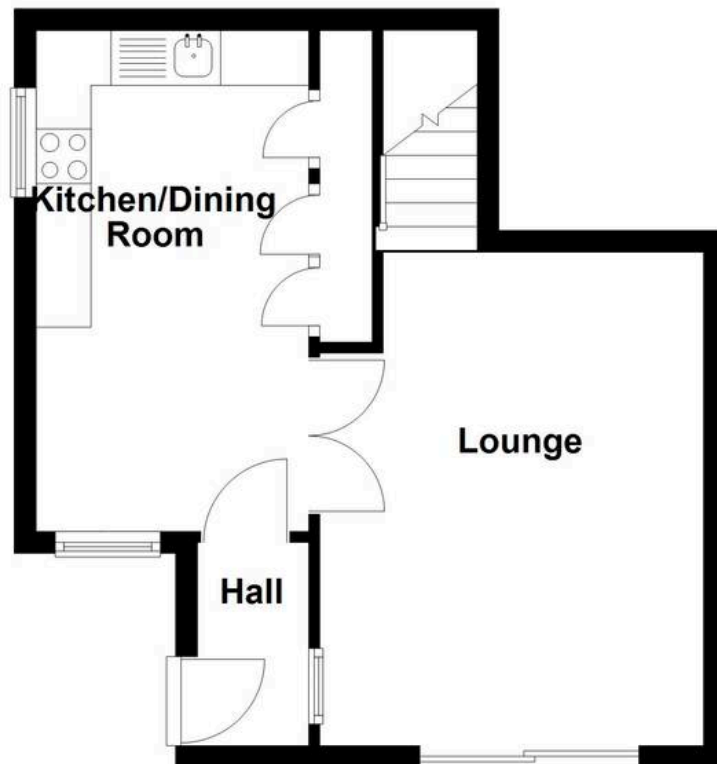
First Floor

Approx. 26.2 sq. metres (282.2 sq. feet)



Ground Floor

Approx. 32.7 sq. metres (351.9 sq. feet)



Total area: approx. 58.9 sq. metres (634.2 sq. feet)



Daniel Matthew Estate Agents Barry

14 High Street Barry, Vale of Glamorgan - CF62 7EA

01446502806

barry@danielmatthew.co.uk

www.danielmatthew.co.uk/

DanielMatthew
ESTATE AGENTS