



11 Mallock Road, Torquay - TQ2 6AF
£225,000

 **ABSOLUTE**
SALES & LETTINGS





11 Mallock Road

Torquay, Torquay

A well-presented three-storey Chelston home which has been recently redecorated featuring four bedrooms, 2 bathrooms, 2 reception rooms in a sought after residential area and no onward chain...

Council Tax band: B

Tenure: Freehold

EPC Energy Efficiency Rating: E

EPC Environmental Impact Rating: E

- Attractive and well-presented family home in sought-after Chelston which has recently been redecorated
- Comfortable walk to parks, shops, schools and the seafront.
- Spacious reception hallway with original character.
- Bay-fronted lounge with feature fireplace, wall lighting and high ceilings.
- Separate dining room with bespoke shelving, storage and doors to the garden.
- Newly installed Howden's kitchen with modern fittings and appliance space.
- Three first-floor bedrooms — two doubles and a single — plus modern bathroom.
- Exceptional top-floor primary suite with extensive storage and a contemporary en-suite.
- Tiered rear garden with decked terrace, lawn and stunning views across Torquay to Berry Head.
- No onward chain



11 Mallock Road

Torquay, Torquay

Torquay Train Station has some direct lines to London Paddington and Birmingham and is just one stop from the main line Newton Abbot. By Air: Exeter Airport provides both UK and international flights. By Sea: Torquay Marina provides a safe haven for boats in all weathers, sheltered from the prevailing south-westerly winds. Regional Cities of Exeter & Plymouth approximately 22 miles and 32 miles respectively. Magnificent Dartmoor National park approximately 12 miles Torquay sits on the warm South Devon coast as one of three towns — alongside Paignton and Brixham — that shape the naturally protected, east-facing harbour of Torbay. With its excellent beaches, impressive coastline, mild climate and wide range of leisure facilities, the area fully deserves its long-established reputation as the English Riviera ///cyber.sour.comb - What3words

Absolute Sales & Lettings

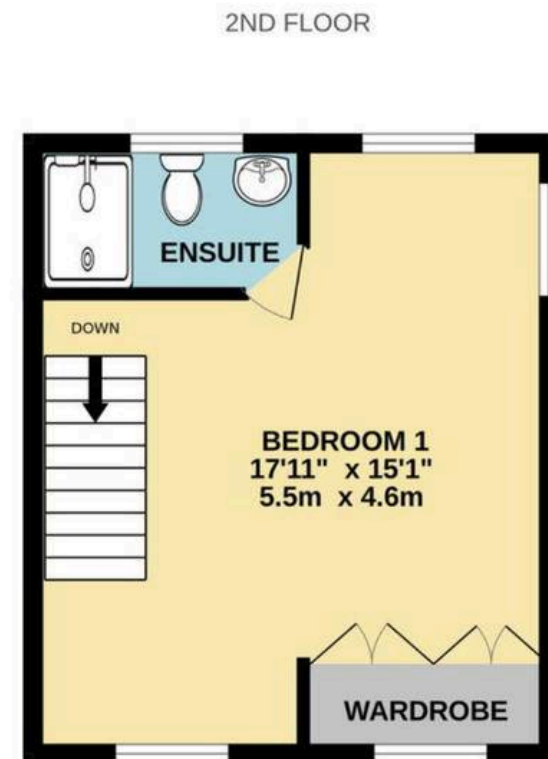
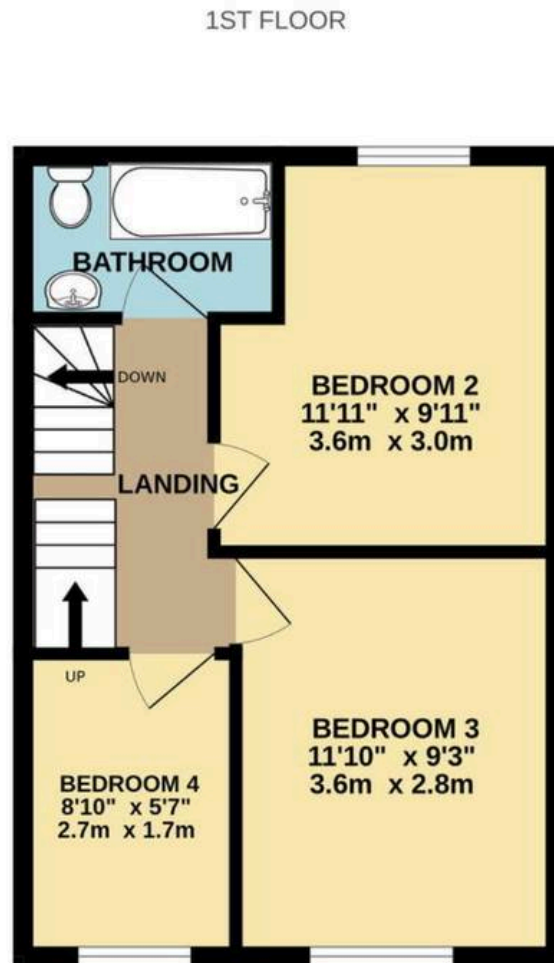
Absolute Sales & Lettings Ltd, 13 Ilsham Road - TQ1 2JG

01803 214214

torquay@movewithabsolute.co.uk

movewithabsolute.co.uk/





Whilst every attempt has been made to ensure the accuracy of the floorplan contained here, measurements of doors, windows, rooms and any other items are approximate and no responsibility is taken for any error, omission or mis-statement. This plan is for illustrative purposes only and should be used as such by any prospective purchaser. The services, systems and appliances shown have not been tested and no guarantee as to their operability or efficiency can be given.
Made with Metropix ©2025