



**Flat 157, Berwick Court Nod Rise, Coventry – CV5 7JN**

**In Excess of £160,000**

**Williams**  
BIRCH



# Flat 157

## Berwick Court Nod Rise, Coventry

Chic 2-bed flat with stunning views, balcony (ideal for coffee and drinks), fitted kitchen, 2 cosy bedrooms, relaxing bathroom, garage, guest parking, long lease, top amenities nearby. Call now! EPC rating pending. 939-year lease, £110/month fees.

Council Tax band: B

Tenure: Leasehold

- Lovely Top Floor Apartment
- Superb Views
- Lounge / Diner With Balcony
- Fitted Kitchen
- 2 Bedrooms
- Family Bathroom
- Garage And Parking
- Long Lease
- Superb Location With Excellent Local Amenities
- EPC TBC

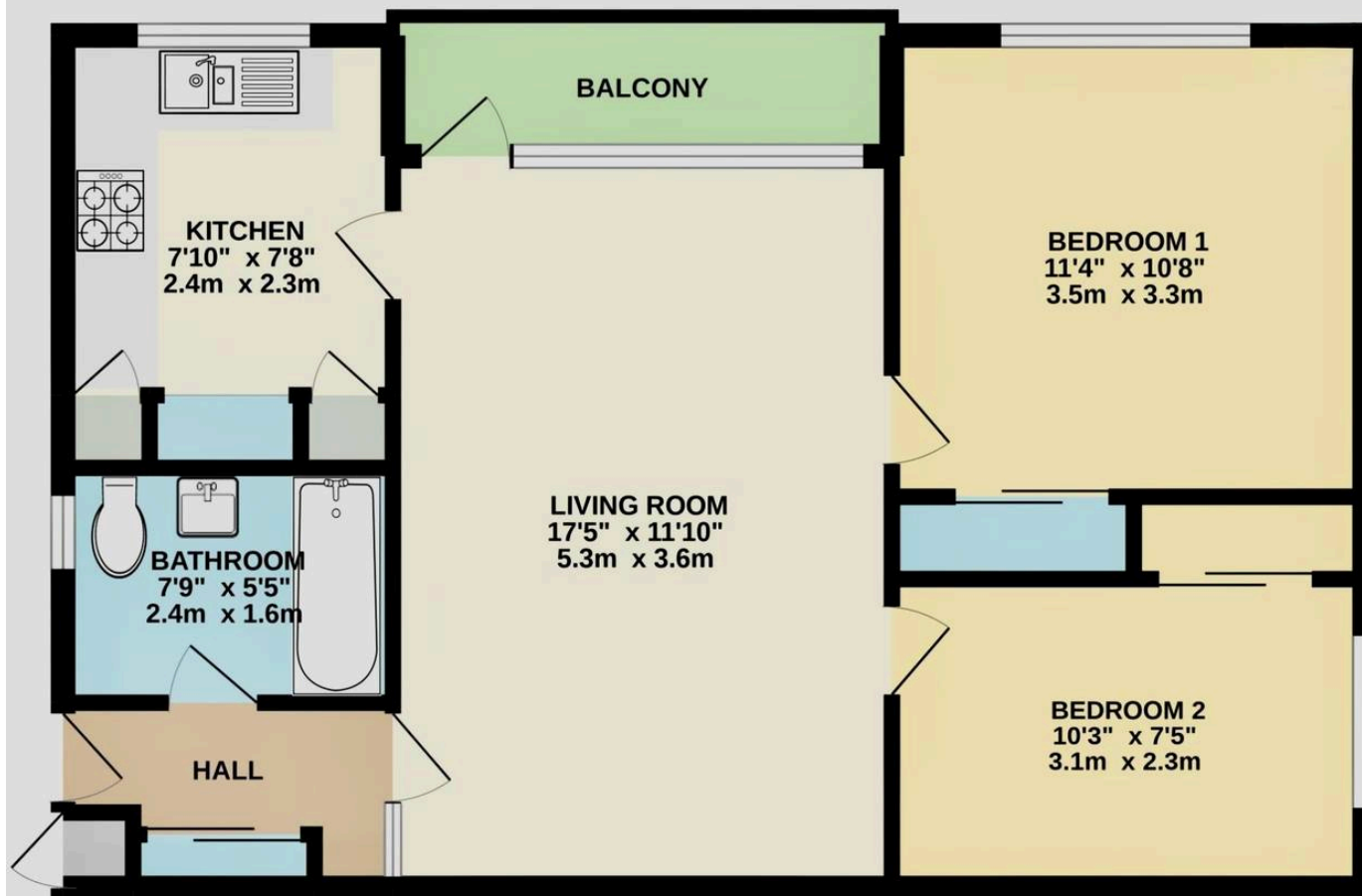








## GROUND FLOOR



TWO BEDROOM TOP FLOOR FLAT

Whilst every attempt has been made to ensure the accuracy of the floorplan contained here, measurements of doors, windows, rooms and any other items are approximate and no responsibility is taken for any error, omission or mis-statement. This plan is for illustrative purposes only and should be used as such by any prospective purchaser. The services, systems and appliances shown have not been tested and no guarantee as to their operability or efficiency can be given.  
Made with Metropix ©2022