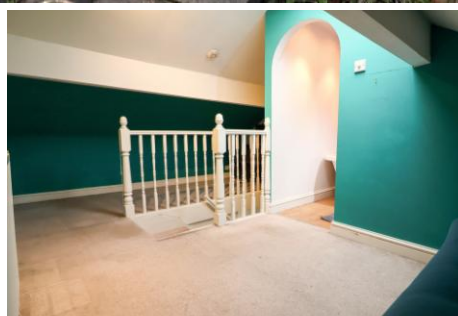


23 Woolley Lane, Hollingworth, Via Hyde, SK14 8NW



- NO VENDOR CHAIN
- Mid Stone Terrace Cottage
- Two Bedrooms
- Useful Loft with Roll Top Bath
- Kitchen / Diner
- Cosy Lounge
- Private Forecourt & Rear Gardens
- Open Countryside Aspect to Front
- Ideal for M60 Motorway Networks
- Ideal first home or BTL Investment

23 Woolley Lane, Hollingworth, Via Hyde, SK14 8NW

MAIN DESCRIPTION

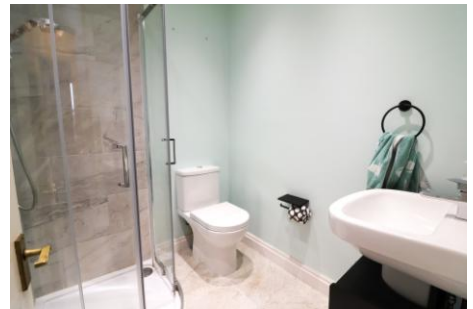
*****NO VENDOR CHAIN*****

A delightful two-bedroom, garden-fronted stone cottage boasting character, space and superb open views to the front. Ideally positioned for excellent access to the M60 motorway network, this property makes an ideal first home or buy-to-let investment.

Inside, the cottage features a welcoming lounge, a spacious kitchen/diner, two well-proportioned bedrooms and a modern shower room. A standout feature is the impressive loft room, complete with its own loft bathroom featuring a luxurious roll-top bath, offering a perfect retreat or flexible storage space

To the rear is a private yard, ideal for relaxing or outdoor dining and use of a well maintained communal garden space.

With its attractive stone frontage, practical layout and excellent transport links, this charming cottage offers comfort, convenience and great potential.



23 Woolley Lane, Hollingworth, Via Hyde, SK14 8NW

LOUNGE

13' 5" x 12' 9" (4.09m x 3.89m) Bright front lounge with white uPVC double-glazed window to the front elevation. Features include an electric fireplace with wood surround, built-in low-level storage, cupboards beneath the window, large chimney breast with wall lights on either side, and ceiling pendant light. Internal half-glazed timber door leads through to the kitchen.

KITCHEN/DINER

13' 5" x 11' 6" (4.09m x 3.51m) Located to the rear, the kitchen includes an L-shaped layout with wood-effect laminate worktops and a stainless-steel 1.5 bowl sink with drainer. Cream high and low-level units with chrome handles, white ceramic tiled splash backs. Appliances include; Freestanding electric stove with four-ring hob and extractor, Freestanding slimline dishwasher. Space for under-counter washing machine, Space for under-counter fridge and freezer, Gas central heating boiler. Wall mounted radiator, Central ceiling light, Small storage area under the stairs, uPVC double-glazed rear window and a half-glazed composite door opening onto the rear yard.

BEDROOM ONE

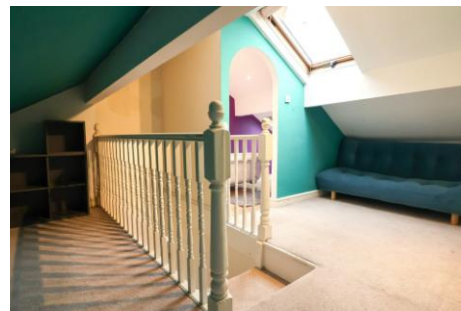
12' 8" x 11' 8" (3.86m x 3.56m) Large double bedroom with uPVC white double-glazed sash window to the front elevation, single panel radiator, decorative fireplace to chimney breast, and ceiling pendant.

SHOWER ROOM

5' 7" x 4' 7" (1.7m x 1.4m) Modern shower room with quadrant enclosure, fully tiled walls in grey ceramic tiles, matching grey tiled floor, electric shower, extractor fan, low-level WC, wash basin with cupboard below, gas central heating towel radiator, and spotlights to the ceiling.

BEDROOM TWO

8' 4" x 5' 7" (2.54m x 1.7m) uPVC double-glazed window to the rear elevation, ceiling light with fan, single panel radiator, and stripped wooden floorboards.



23 Woolley Lane, Hollingworth, Via Hyde, SK14 8NW

SECOND FLOOR LOFT ROOM

15' 9" x 13' 5" (4.8m x 4.09m) Accessed via timber stairs from the first-floor landing. Open-plan loft room with double panel radiator, double-glazed Velux-style window, ceiling pendant, and vaulted ceiling. Archway leads into the loft bathroom.

LOFT BATHROOM

8' 3" x 4' 3" (2.51m x 1.3m) Roll-top style bath, double-glazed Velux window, spotlights to the ceiling, and simple, clean décor.

EXTERNAL

Small private garden to the front elevation with lovely countryside views and to the rear is a private rear yard with concrete slab paving, small storage outbuilding, and timber gate leading to shared access for bins.

DISCLAIMER

The vendor has advised the following:

Property Tenure - Leasehold

Annual Ground Rent - £5.33 approx per annum

Leasehold Term - 999 years with 852 remaining

EPC Rate - D

Council Tax Band Rating - A

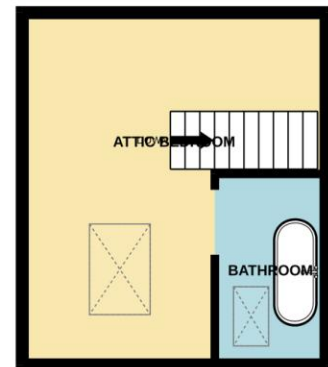
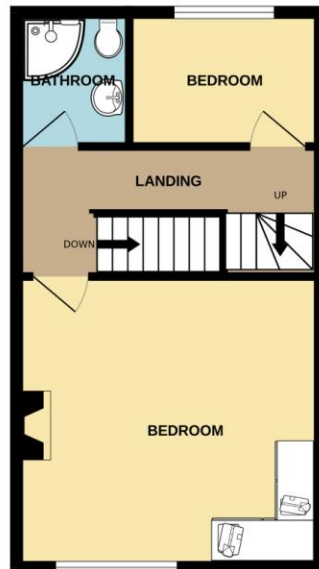
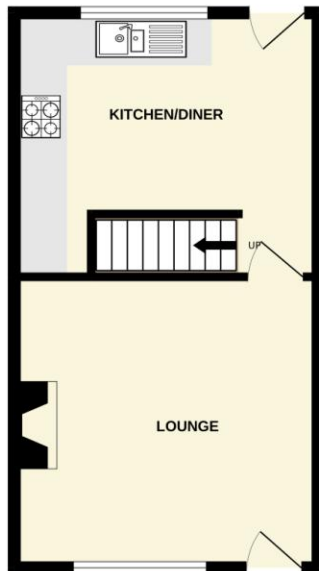
Council – Tameside Borough Council

23 Woolley Lane, Hollingworth, Via Hyde, SK14 8NW

GROUND FLOOR

1ST FLOOR

2ND FLOOR



Whilst every attempt has been made to ensure the accuracy of the floorplan contained here, measurements of doors, windows, rooms and any other items are approximate and no responsibility is taken for any error, omission or mis-statement. This plan is for illustrative purposes only and should be used as such by any prospective purchaser. The services, systems and appliances shown have not been tested and no guarantee as to their operability or efficiency can be given.
Made with Metropix ©2025

Agents Disclaimer: Stepping Stones Asset Management Ltd, their clients and employees 1: Are not authorised to make or give any representations or warranties in relation to the property either here or elsewhere, either on their own behalf or on behalf of their client or otherwise. They assume no responsibility for any statement that may be made in these particulars. These particulars do not form part of any offer or contract and must not be relied upon as statements or representations of fact. 2: Any areas, measurements or distances are approximate. The text, photographs and plans are for guidance only and are not necessarily comprehensive. It should not be assumed that the property has all necessary planning, building regulation or other consents and Stepping Stones Asset Management Ltd have not tested any services, equipment or facilities. Purchasers must make further investigations and inspections before entering into any agreement.

Purchaser information -The Money Laundering, Terrorist Financing and Transfer of Funds(Information on the Payer) Regulations 2017(MLR 2017) came into force on 26 June 2017. Stepping Stones Asset Management Ltd require any successful purchasers proceeding with a property to provide two forms of identification i.e. passport or photocard driving license and a recent utility bill or bank statement. We are also required to obtain proof of funds and provide evidence of where the funds originated from. This evidence will be required prior to Stepping Stones Asset Management removing a property from the market and instructing solicitors for your purchase.

Third Party Referral Arrangements - Stepping Stones Asset Management may have established professional relationships with third-party suppliers for the provision of services to Clients. As remuneration for this professional relationship, the agent may receive referral commission from the third-party companies. Details are available upon request.