



MOSTYN STREET, LEICESTER, LEICESTERSHIRE LE3 6DU

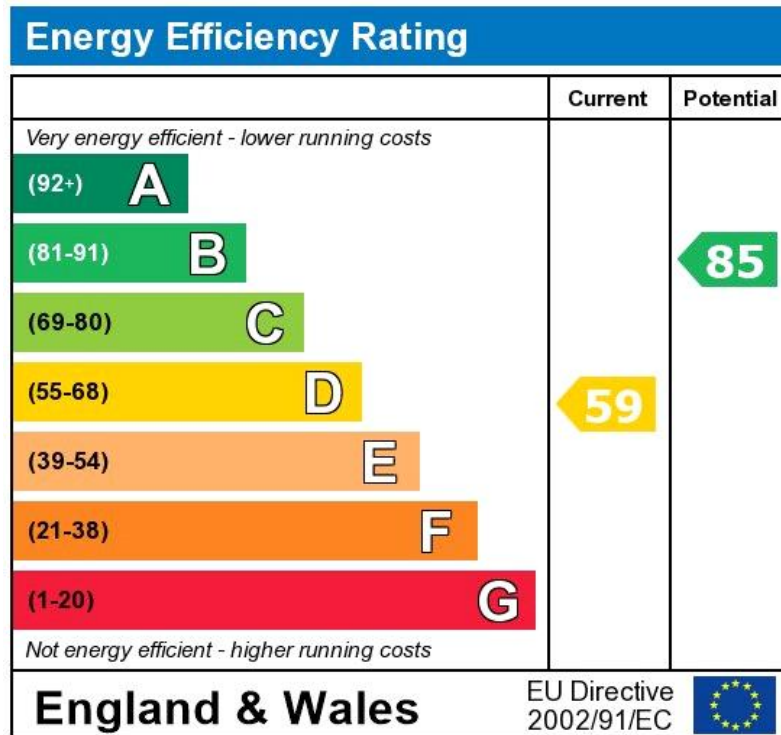
£160,000



PROPERTY REFERENCE CODE: RS0081

MOSTYN STREET, LEICESTER, LEICESTERSHIRE LE3 6DU

- CONTACT KCR REAL ESTATE TO ARRANGE A VIEWING!
- IDEAL FOR FIRST TIME BUYERS OR INVESTORS
- LARGE BEDROOMS
- PRIME LOCATION
- END TERRACED



The energy efficiency rating is a measure of the overall efficiency of a home. The higher the rating the more energy efficient the home is and the lower the fuel bills will be.

This property consists of:

KCR Real Estate present a three-bedroom end-terraced freehold house on Mostyn Street, LE3.

The property provides straightforward, practical accommodation suited to first-time buyers, families, or investors.

Inside, there are three bedrooms, a family bathroom, a fitted kitchen and well-proportioned living space suitable for everyday use. The layout works for both home working and family living, with sensible storage and room to organise furniture without compromise.

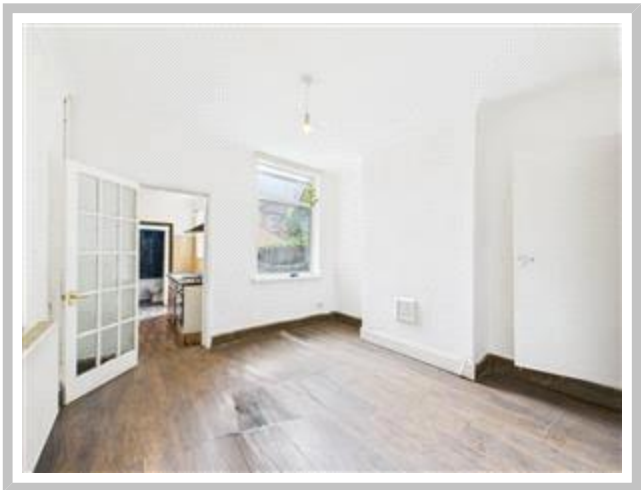
The house sits on Mostyn Street in LE3, with local shops, services and regular bus links within easy reach. Leicester city centre and main road connections can be accessed quickly by bus or car. There are schools and open spaces in the surrounding area, making the location convenient for day-to-day needs and commutes.

Key points for buyers and investors: freehold tenure, three genuine bedrooms, functional layout, and a position that supports strong rental demand in LE3.

The home is ready to occupy as-is, with scope for routine upgrades to increase value or rental appeal if desired.

Viewings are available by appointment with KCR Real Estate. Contact us to arrange a time and for any further details.

Tenure: Freehold





TENURE: We have been advised by the Vendors the property is Freehold.

It is advised to have this information verified by your legal representative; we take no legal responsibility given by a vendor/seller of its accuracy. It was not possible to verify and obtain this information given by means of any current documentation.