





# Apartment 11

The Willows Sandbach Drive, Northwich

- Spacious One Bedroom Second Floor Apartment
- Directly Overlooking The River Weaver
- 20' Living Room With Bay Window & Stunning Views
- Fully Equipped Kitchen With built-in Appliances
- Double Bedroom With Fitted Wardrobe
- Modern Bathroom With A Three Piece Suite & Shower Over Bath
- Allocated Parking Space Outside Apartment Block

Introducing this exquisite one bedroom flat, situated on the second floor, boasting a spacious interior and mesmerising views directly overlooking the River Weaver. The 20' living room, complete with a charming bay window, presents stunning vistas that are sure to captivate. The property features a fully equipped kitchen, boasting built-in appliances, ideal for culinary enthusiasts. The double bedroom is enhanced with a fitted wardrobe, ensuring ample storage space. A modern bathroom, appointed with a sleek three-piece suite and a shower over the bath, offers a sanctuary for relaxation. Additionally, the flat includes an allocated parking space outside the apartment block, providing convenience and peace of mind.

Ideally located near Kingsmead local centre, residents can indulge in a wealth of excellent facilities nearby. This remarkable property harmoniously blends modern convenience with scenic splendour, offering a desirable retreat for those seeking comfort coupled with a picturesque ambience.





# Apartment 11

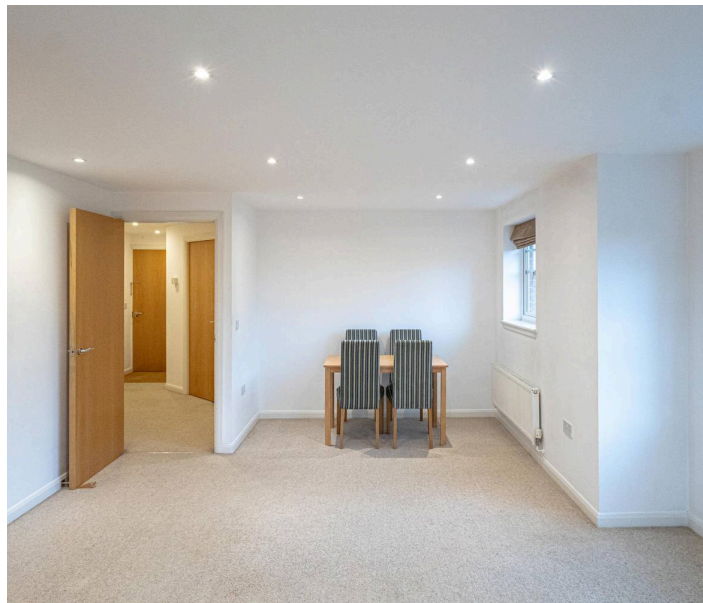
The Willows Sandbach Drive, Northwich

Council Tax band: B

EPC Energy Efficiency Rating: C

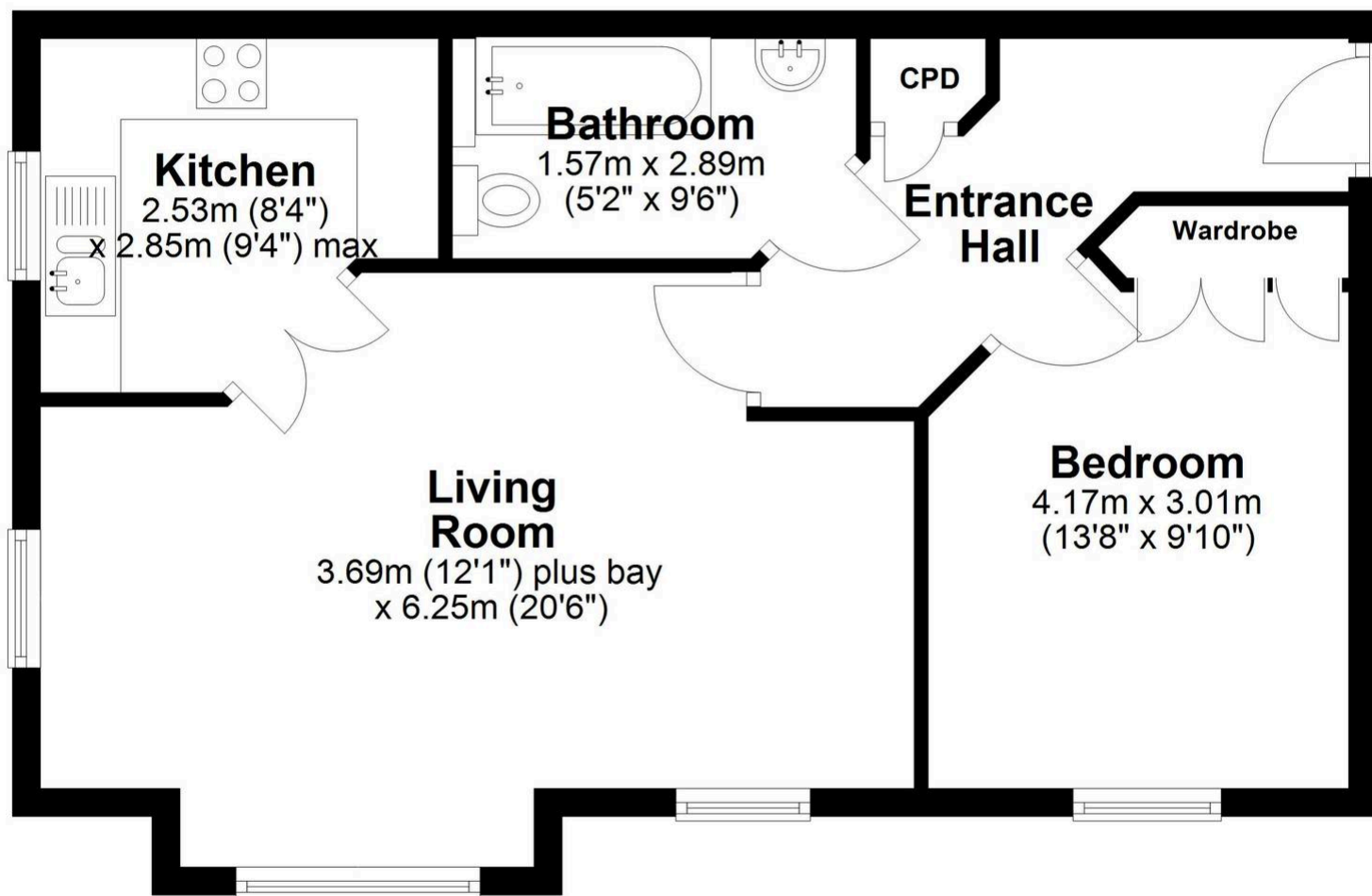
EPC Environmental Impact Rating: B

- Spacious One Bedroom Second Floor Apartment
- Directly Overlooking The River Weaver
- 20' Living Room With Bay Window & Stunning Views
- Fully Equipped Kitchen With built-in Appliances
- Double Bedroom With Fitted Wardrobe
- Modern Bathroom With A Three Piece Suite & Shower Over Bath
- Allocated Parking Space Outside Apartment Block



## Second Floor

Approx. 51.6 sq. metres (555.1 sq. feet)



Total area: approx. 51.6 sq. metres (555.1 sq. feet)





## Williams Estates

33 The Green, Hartford - CW8 1QA

01606 331784

info@westates.co.uk

www.westates.co.uk/#/



These particulars, whilst believed to be accurate are set out as a general outline only for guidance and do not constitute any part of an offer or contract. Intending purchasers should not rely on them as statements of representation of fact, but must satisfy themselves by inspection or otherwise as to their accuracy. All measurements quoted are approximate. We are unable to confirm the working order of any fixtures and fittings including appliances that are included in these particulars. No person in this firm's employment has the authority to make or give any representation or warranty in respect of the property. Williams Estates is the trading name of Williams Estates (Ltd). Registered address 33, The Green, Hartford, Northwich, Cheshire, CW8 1QA. Reg number 07682683. Director Andrew P Williams