



PARTNERS

REAL ESTATE

58 Birch Hill Crescent, Onchan - IM3 3DB

Isle Of Man

£2,000 pcm

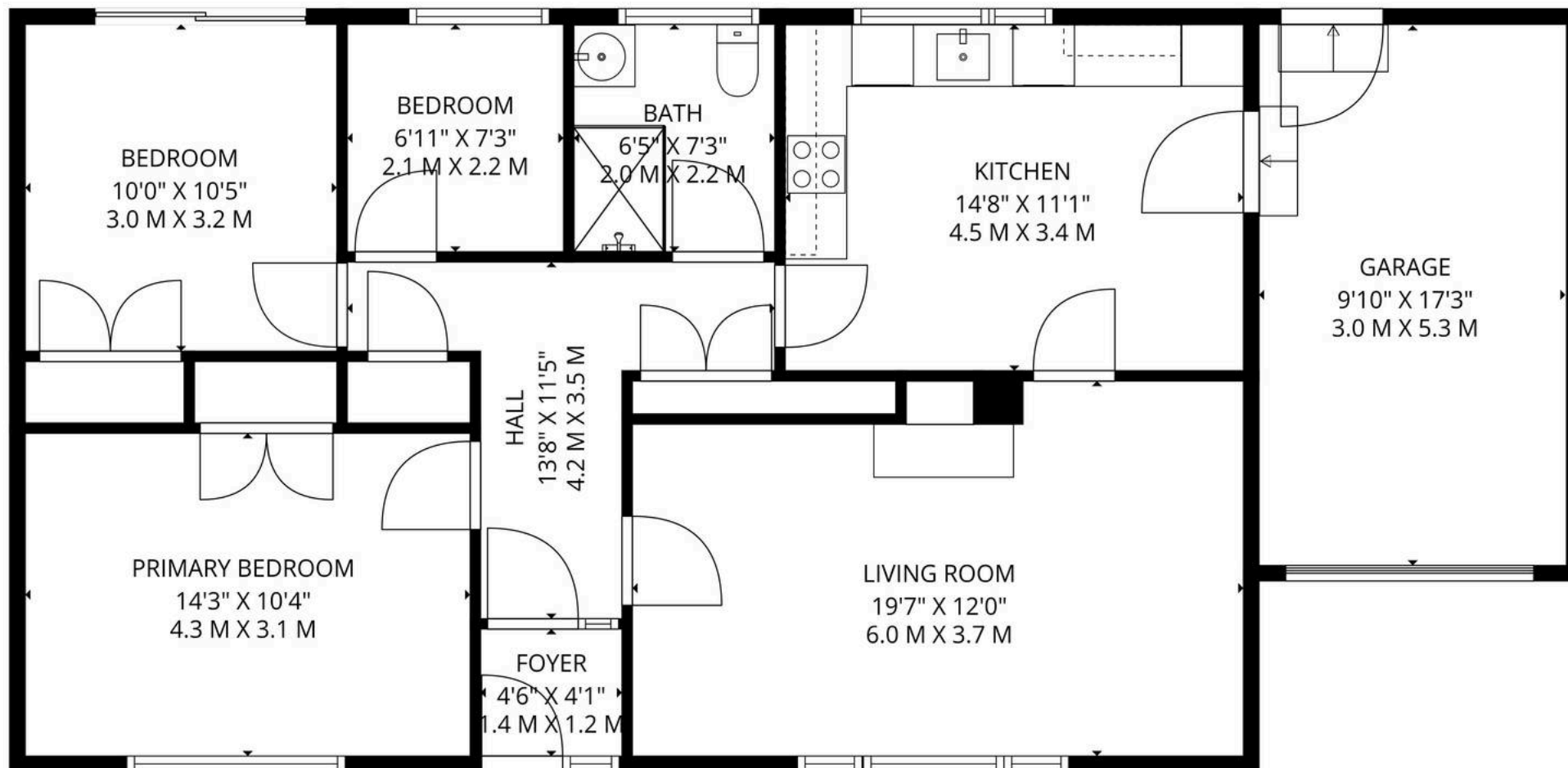
58 Birch Hill Crescent

Onchan, Isle Of Man

From Onchan Village proceed North up Avondale Road taking the 3 right into Birch Hill Crescent, continue up the hill past Birch Hill Stores on the right and continue up the hill and number 58 can be found on the right hand side opposite the entrance to Cronk Avenue and clearly identified by our to let board.

- Delightful Detached True Bungalow With Stunning Hill Views At The Rear
- Recently Redecorated And Newly Fitted Carpets And Flooring Throughout
- Lounge, Good Size Kitchen/Diner With White Goods Included
- Fully Modernised Bathroom With Large Walk In Shower
- Gas Fired Central Heating, uPVC Double Glazed Through Out
- Integral Single Garage With Electric Up And Over Door
- Private Rear Lawned Garden With Patio Area
- Off Road Parking For 2/3 Vehicles, Integral Single Garage With Electric Up And Over Door
- Situated In A Derisible Location Of Onchan Close To Amenities And On A Bus Route
- Large Storage Cupboard And A Good Size Coats Cupboard
- 3 Bedrooms, 2 Doubles With Fitted Wardrobes





TOTAL: 912 sq. ft, 85 m2
 1st floor: 912 sq. ft, 85 m2
 EXCLUDED AREAS: GARAGE: 170 sq. ft, 16 m2, WALLS: 83 sq. ft, 8 m2

FLOOR PLAN CREATED BY INVISION MEDIA & MARKETING. MEASUREMENTS DEEMED HIGHLY RELIABLE BUT NOT GUARANTEED.





Partners (Isle of Man) Limited

64 Duke Street, Douglas, Isle Of Man - IM1 2AR

01624 777044 • hello@partners.co.im • partners.co.im



All measurements are approximate and for general guidance only and whilst every attempt has been made to ensure accuracy, they must not be relied on. The fixtures, fittings and appliances referred to have not been tested and therefore no guarantee can be given that they are in working. Internal photographs are reproduced for general information and it must not be inferred that an item shown is included with the property. Copyright ©Partnersrealestate. Partners Real Estate (Group) registered at 64 Duke Street, Douglas, Isle of Man, IM1 2AR