



Jockey Street  
Salford



Offers Over £280,000



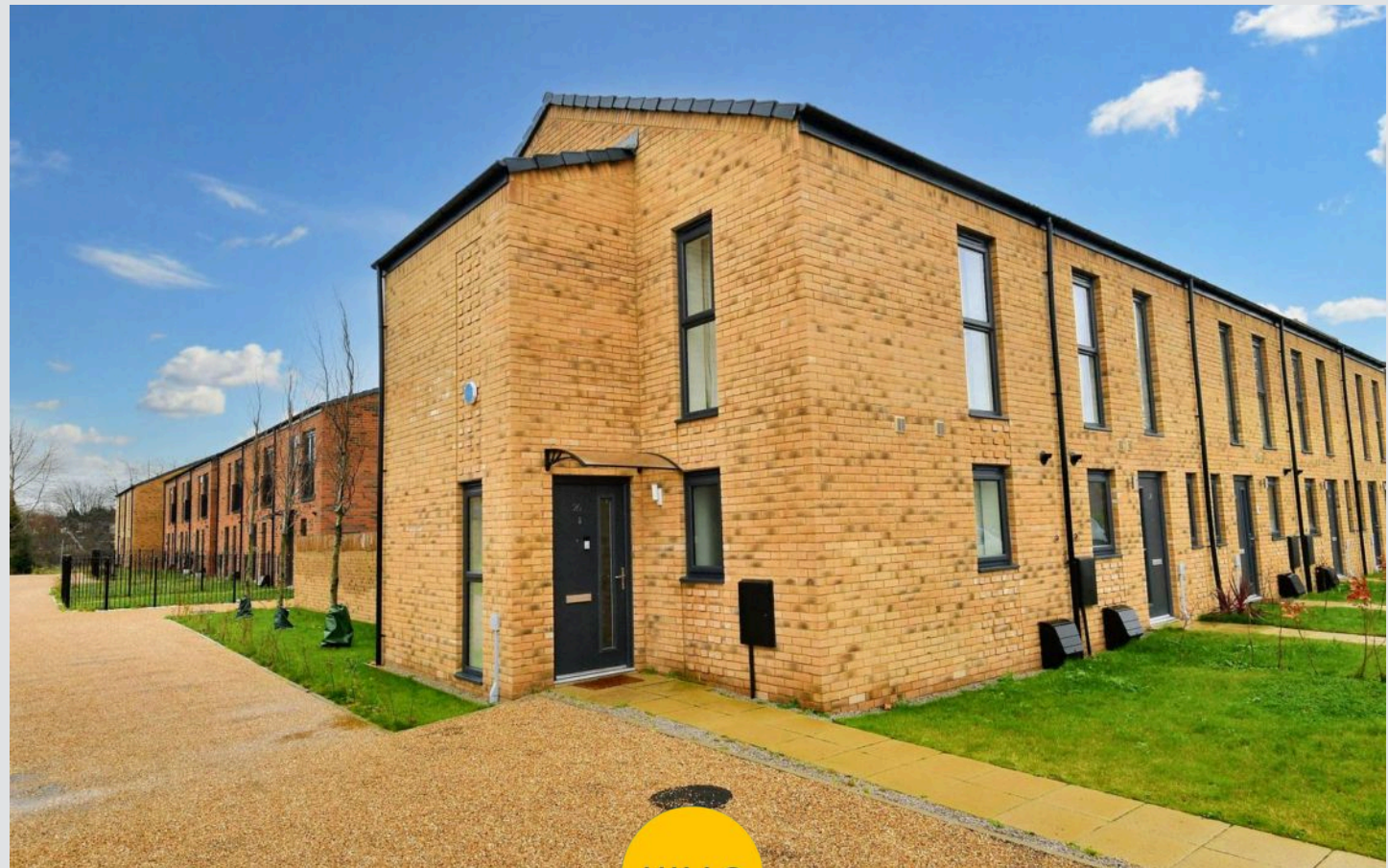
# Jockey Street

Salford

**\*INCLUDES SOLAR PANELS AND UPGRADES\*** Beautifully Presented Two Bedroom End Terraced Property Located on the Popular Castle Irwell Development! Council Tax band: A

Tenure: Freehold

- Stylish Modern Two Bedroom End Terraced Property
- Located on the Popular Castle Irwell Development
- Benefits from Solar Panels and Upgraded Extras, Including White Goods, Kitchen Counter, Premium Herringbone Flooring and Carpet Runner on Stairs
- Large Open Plan Living, Dining and Kitchen Area with Contemporary Fitted Units and Patio Doors
- Benefits from a Downstairs W/C
- Two Double Bedrooms, with a Dressing Room/Office Accessible from the Main Bedroom
- Modern Three-Piece Bathroom
- Stylish, Low-Maintenance Garden to the Rear with Artificial Grass and Paving
- Close to Excellent Transport Links into Salford Quays, Media City and Manchester City Centre
- Secure Gated Parking with Additional Visitor Parking





### Entrance Hallway

### Open Plan Living, Dining, Kitchen

27' 0" x 17' 8" (8.23m x 5.38m)

### Downstairs W.C.

### Landing

### Bedroom One

12' 6" x 11' 7" (3.81m x 3.54m)

### Bedroom Two

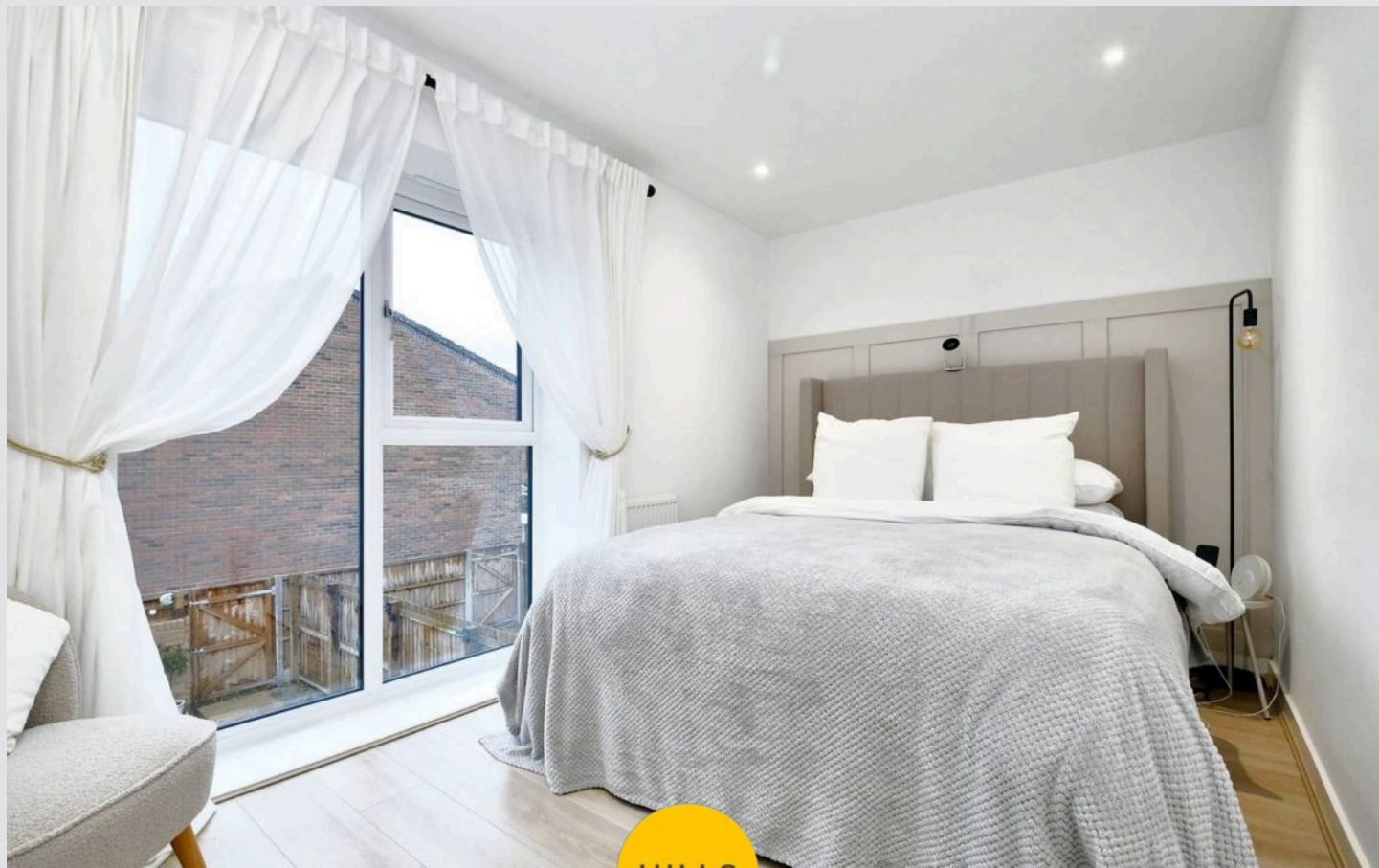
12' 6" x 8' 1" (3.82m x 2.46m)

### Dressing Room/Office

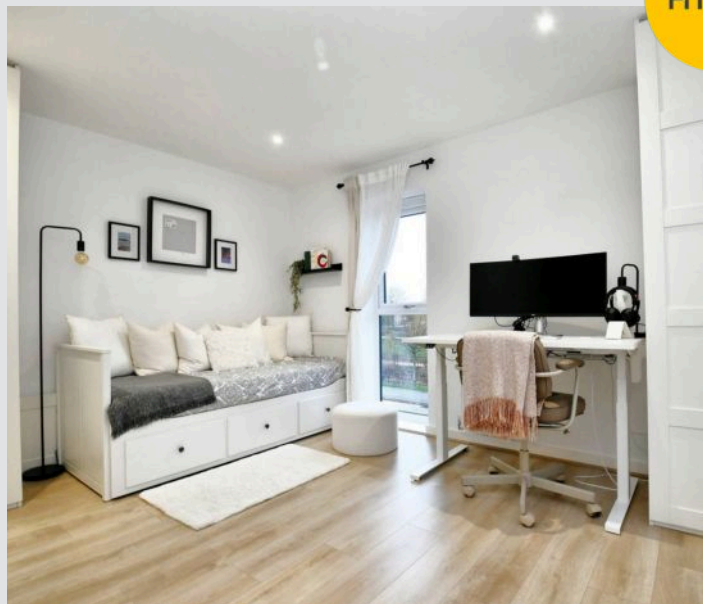
4' 8" x 3' 2" (1.42m x 0.96m)

### Bathroom

7' 7" x 6' 6" (2.30m x 1.99m)



HILLS







HILLS









## Hills | Salfords Estate Agent

Hills Residential, Sentinel House Albert Street – M30 0SS

0161 707 4900

[sales@hills.agency](mailto:sales@hills.agency)

[www.hills.agency/](http://www.hills.agency/)



By law, we are required to conduct anti-money laundering checks on all potential buyers and sellers. In line with HMRC guidelines, our trusted partner, Coadjute, will securely manage these checks on our behalf. A non-refundable fee of £45 + VAT per person will apply, and Coadjute will handle the payment. Once an offer is accepted, Coadjute will send a secure link for you to complete the biometric checks. These checks must be completed before we can send the memorandum of sale to all parties. PLEASE NOTE: The Agent has not tested any equipment, fixtures, fittings or services so cannot verify that they are in working order or fit for the purpose. References to the properties tenure are based on information supplied by the seller. You are advised to check the availability of this property before travelling any distance to view. Every effort has been made to ensure these particulars are correct and not misleading but their accuracy is not guaranteed nor do they form part of any contract.