



24 Nidderdale Way, Harrogate
Harrogate

Guide Price **£375,000**



MYRINGS



24 Nidderdale Way

Harrogate, Harrogate

A modern 3 bedroom detached house built in 2021 enjoying a 16'6 x 9'8 dining kitchen with double doors to the gardens, standing in generous sized enclosed lawned gardens with a detached single garage and side driveway situated on a popular, exclusive development of homes within a short walk of reputable schools, shops and children's play park.

Council Tax band: D

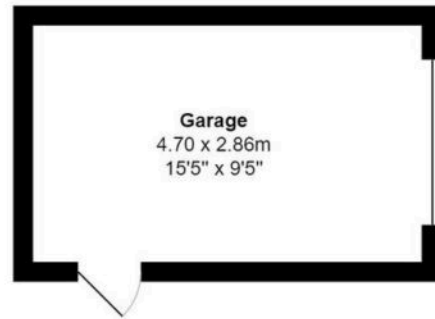
Tenure: Freehold

- PRIVATE REAR ENCLOSED GARDENS AND PATIOS
- GOOD SIZED DINING KITCHEN WITH DOUBLE DOORS
- GUEST WC
- TWO MODERN BATHROOMS
- DETACHED GARAGE & DRIVEWAY
- NO ONWARD CHAIN

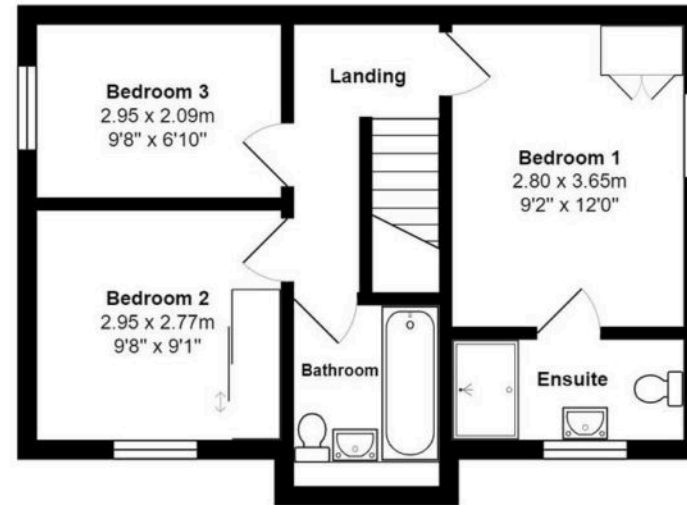


MYRINGS

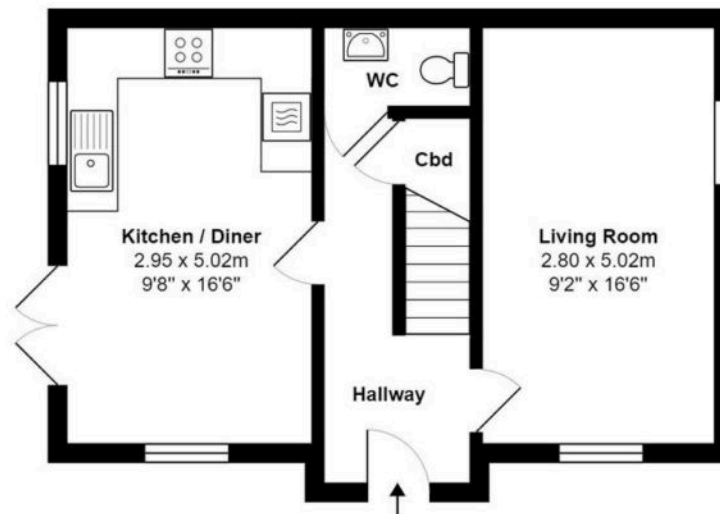




Total Area: 93.8 m² ... 1010 ft²
All measurements are approximate
and for display purposes only.

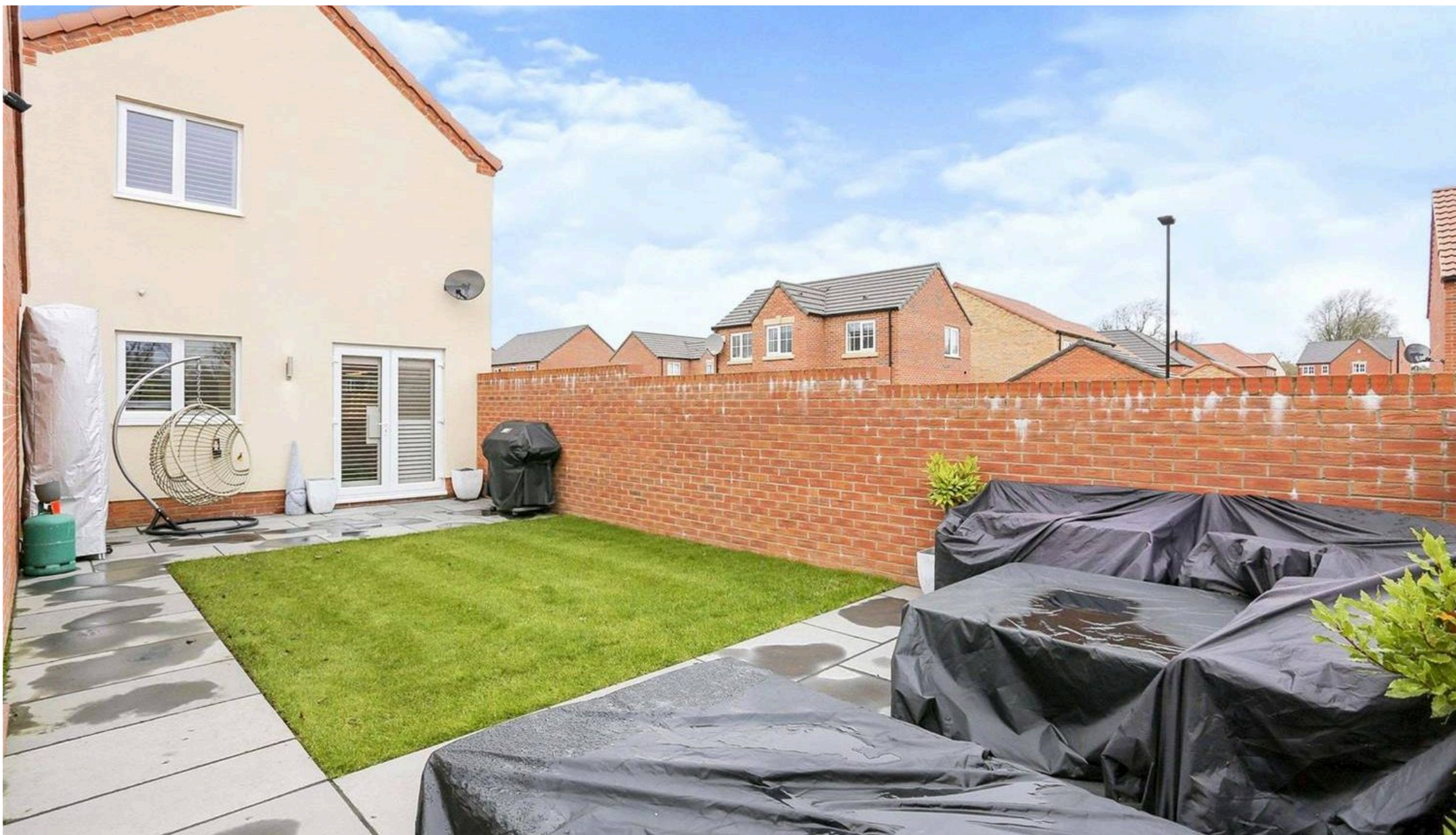


First Floor
Area: 40.3 m² ... 433 ft²



Ground Floor
Area: 40.1 m² ... 432 ft²





Myrings Estate Agents

Myrings Estate Agents Ltd, 10 Princes Square - HG1 1LX

01423

566400

▪ enquiries@myringsestateagents.com ▪ <http://myringsestateagents.com/>

