



**20 Barn Owl Close, Torquay - TQ2 7TN**

Guide Price **£360,000**







## 20 Barn Owl Close

Torquay, Torquay

A modern detached four bedroom family style home situated within the popular residential area of The Willows with plenty of kerb appeal, off road parking and living space...

Council Tax band: E

Tenure: Freehold

EPC Energy Efficiency Rating: D

EPC Environmental Impact Rating: E

- Immaculate modern detached home built by Messrs Bovis Homes and offered with vacant possession
- Bright sitting room and separate dining room
- Modern fitted kitchen with built-in appliances
- Principal bedroom with en suite shower room
- Guest bedroom with en suite shower room
- Family bathroom and two further bedrooms
- Useful study/home office
- Separate utility room and cloakroom/WC
- Driveway parking and single garage
- Private tiered rear garden





## 20 Barn Owl Close

Torquay, Torquay

The property is ideally situated within The Willows, a modern and highly popular residential area on the periphery of Torquay. This location offers an outstanding level of convenience, being just moments from the Willows Retail Park and Wren Retail Park. The area is highly regarded by families, with Torbay Hospital and several excellent primary and secondary schools all within easy reach. Commuters enjoy easy access to the A380 dual carriageway, providing fast links to Newton Abbot, Exeter, and the M5 motorway network. Furthermore, Torquay's vibrant seafront and beautiful local beaches are only a short drive away.

### Absolute Sales & Lettings

Absolute Sales & Lettings Ltd, 13 Ilsham Road - TQ1 2JG

01803 214214

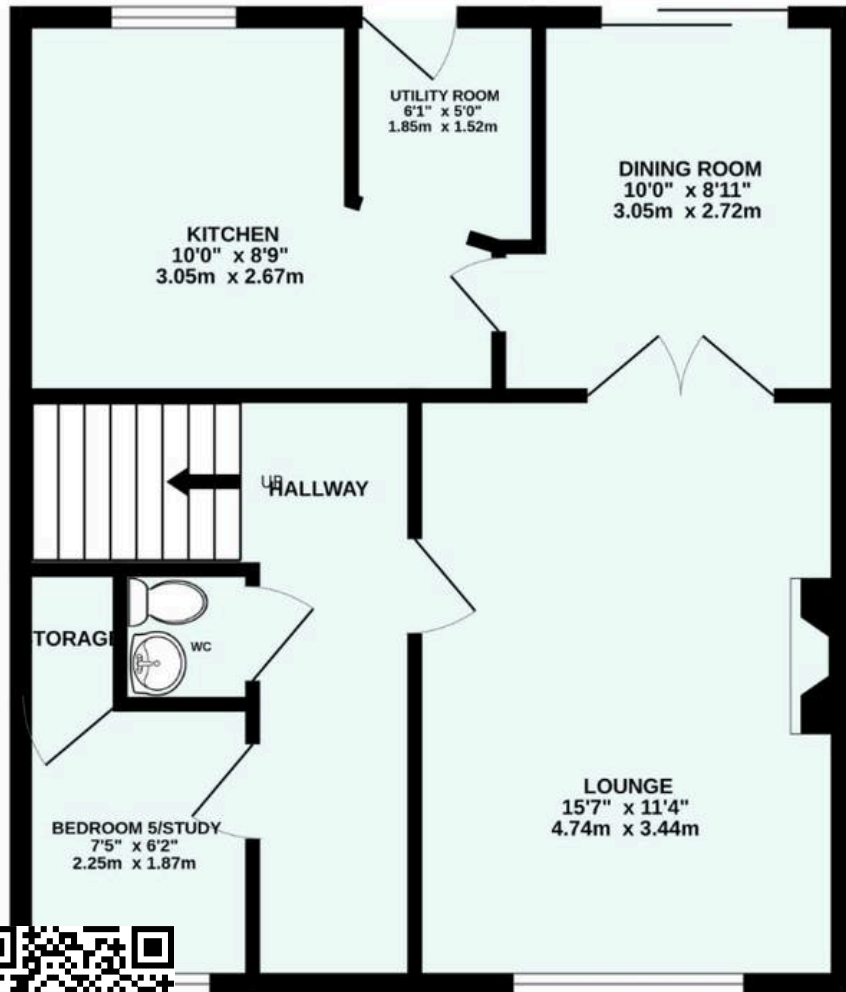
[torquay@movewithabsolute.co.uk](mailto:torquay@movewithabsolute.co.uk)

[movewithabsolute.co.uk/](http://movewithabsolute.co.uk/)





## GROUND FLOOR



## 1ST FLOOR

