



12 Webster Road, Aylesbury

Aylesbury

£565,000



Williams



12 Webster Road

Aylesbury, Aylesbury

Four bedroom detached home in a quiet cul de sac. Features two receptions, kitchen, utility, en suite, garden, double garage and driveway. Located on Turnfurlong/Bedgrove borders.

Turnfurlong is a highly desirable residential area with many amenities including local shopping areas including nearby Jansel Square comprising of a mini supermarket Co-op, newsagents, Sainsburys, morrisons daily, dry cleaners, takeaways and a Lloyds pharmacy. Turnfurlong School is very sought after. Access to the town centre is just a short level distance which can be walked or there is also a regular bus service connecting the town and surrounding areas. The town offers a wealth of amenities including rail links to London Marylebone.

Council Tax band: F

Tenure: Freehold



Entrance/ Hallway

Enter through the front door into this entrance hallway, comprised of carpet underfoot, spotlights to the ceiling, a wall mounted radiator and doors to the kitchen, cloakroom, dining room and lounge.

Living Room

The living room is composed of a window to the front aspect, carpet underfoot, two fitted lights to the ceiling, a feature fireplace, two wall mounted radiators and sliding doors to the enclosed rear garden.

Dining Room

The dining room is comprised of carpeted flooring, a pendant light to the ceiling, a window to the rear aspect, a wall mounted radiator and space for a dining set and other furniture.

Kitchen

This kitchen features wood effect flooring, a window to the rear aspect, spotlights to the ceiling and a range of wall and base mounted units including an integrated oven, microwave, dishwasher, sink with a mixer tap and draining board, electric stove and extractor. Space for other white good such as a fridge/freezer.

Utility

This utility features wood effect flooring, a wall mounted radiator, a window to the front aspect, a light to the ceiling, a base mounted unit, an inset sink with a mixer tap and tiling to splash sensitive areas. A side door allows access to the side aspect.

Cloakroom

The downstairs cloakroom features tiled flooring, a wall mounted radiator, hand wash basin with hot and cold taps, a low level w/c and a fitted light to the ceiling.

Landing

The first floor landing features a window to the front aspect, carpeted flooring, a pendant light to the ceiling, and doors to all bedrooms and the family bathroom.









Entrance/ Hallway

Enter through the front door into this entrance hallway, comprised of carpet underfoot, spotlights to the ceiling, a wall mounted radiator and doors to the kitchen, cloakroom, dining room and lounge.

Living Room

The living room is composed of a window to the front aspect, carpet underfoot, two fitted lights to the ceiling, a feature fireplace, two wall mounted radiators and sliding doors to the enclosed rear garden.

Dining Room

The dining room is comprised of carpeted flooring, a pendant light to the ceiling, a window to the rear aspect, a wall mounted radiator and space for a dining set and other furniture.

Kitchen

This kitchen features wood effect flooring, a window to the rear aspect, spotlights to the ceiling and a range of wall and base mounted units including an integrated oven, microwave, dishwasher, sink with a mixer tap and draining board, electric stove and extractor. Space for other white good such as a fridge/freezer.



Utility

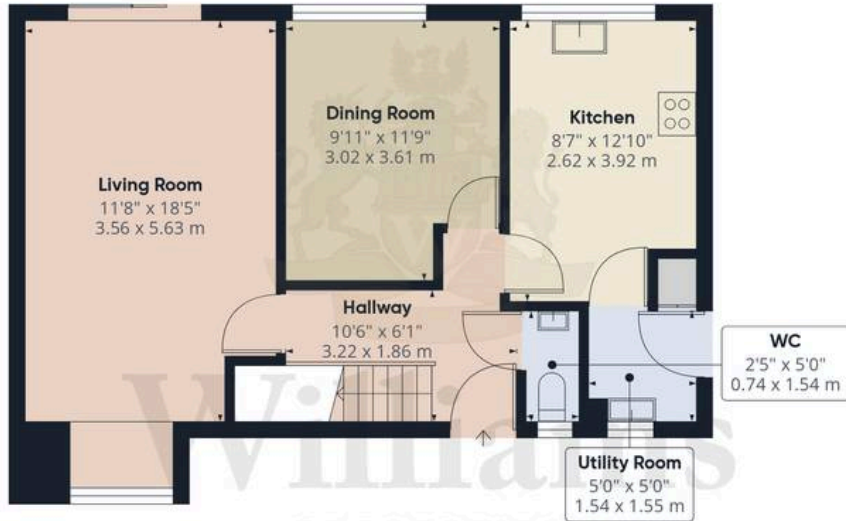
This utility features wood effect flooring, a wall mounted radiator, a window to the front aspect, a light to the ceiling, a base mounted unit, an inset sink with a mixer tap and tiling to splash sensitive areas. A side door allows access to the side aspect.

Cloakroom

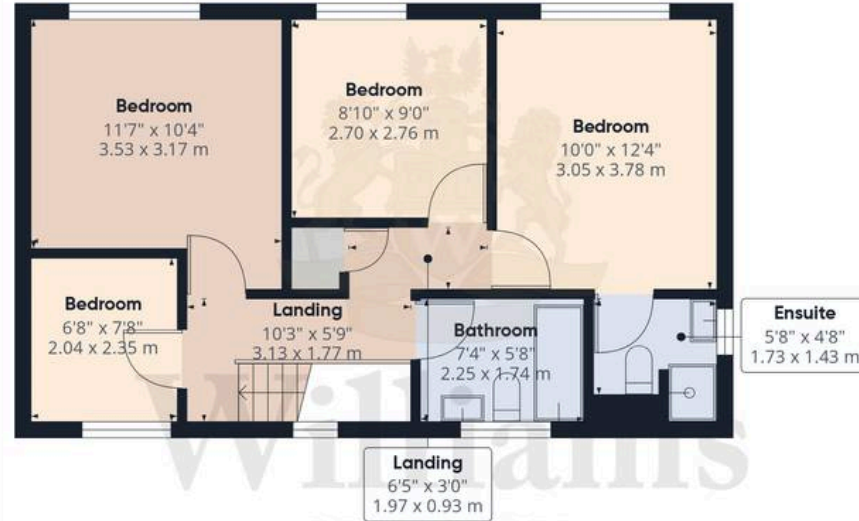
The downstairs cloakroom features tiled flooring, a wall mounted radiator, hand wash basin with hot and cold taps, a low level w/c and a fitted light to the ceiling.

Landing

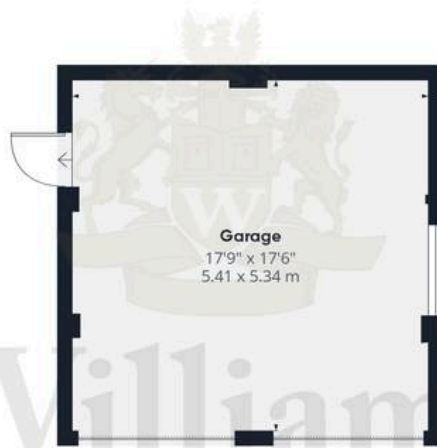
The first floor landing features a window to the front aspect, carpeted flooring, a pendant light to the ceiling, and doors to all bedrooms and the family bathroom.



Floor 0 Building 1



Floor 1 Building 1



Floor 0 Building 2

Approximate total area⁽¹⁾

1401 ft²

130.1 m²

(1) Excluding balconies and terraces

Calculations reference the RICS IPMS 3C standard. Measurements are approximate and not to scale. This floor plan is intended for illustration only.

GIRAFFE360