



Bramcote Street, Nottingham
£850 PCM

 **Comfort**
Estates



Bramcote Street

Nottingham

Comfort Estates are pleased to offer this two bedroom mid-terrace house, located on Bramcote Street and just a short walk into the City Centre.

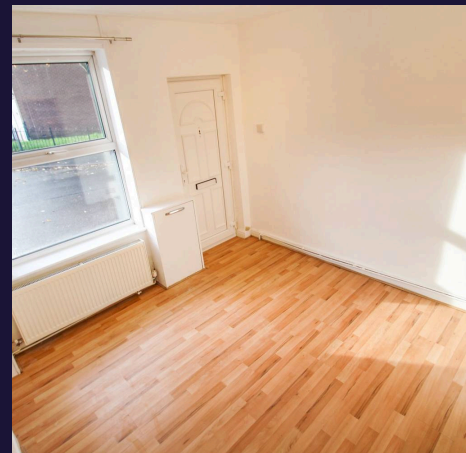
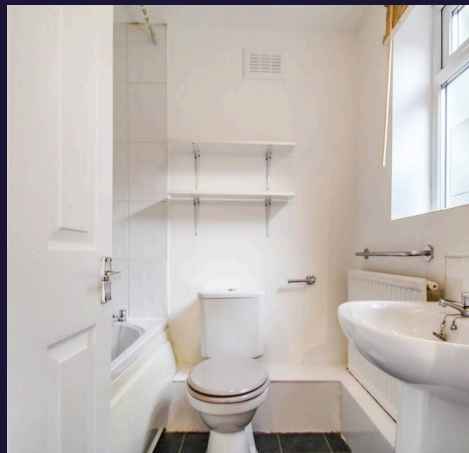
You are in a great location for easy access to the city and public transport links around Nottingham, there are local amenities within walking distance plus the Beechdale Retail Park is either a 5 minute drive or 20 minute walk from the property.

The property briefly comprises of an open plan living/dining space, a fitted kitchen, bathroom, and two bedrooms. There is a small rear yard and on-street parking at the front of the property.

New kitchen flooring will be going down for the start of a new tenancy.

The property comes unfurnished with an undercounter fridge/freezer supplied in the kitchen.

Available from December 17th 2025 - Get in touch today to arrange a viewing.



**Kitchen**

11' 1" x 6' 0" (3.37m x 1.84m)

A fitted kitchen with a range of floor and wall units offering plenty of storage, an integrated oven with a ceramic hob and extractor over, an under counter fridge freezer, and space for two further appliances. New kitchen flooring will be put down for the new tenancy.

Lounge

11' 8" x 10' 6" (3.55m x 3.21m)

A bright space with freshly decorated white walls and laminate flooring.

Dining Room

11' 9" x 11' 8" (3.58m x 3.55m)

Located next to the living room through an archway is a great space to have as a dining area.

Master Bedroom

11' 9" x 10' 7" (3.59m x 3.23m)

Facing the road this room has bright white walls and laminate flooring, a rail fitted in an alcove and built in cupboard.

Bedroom 2

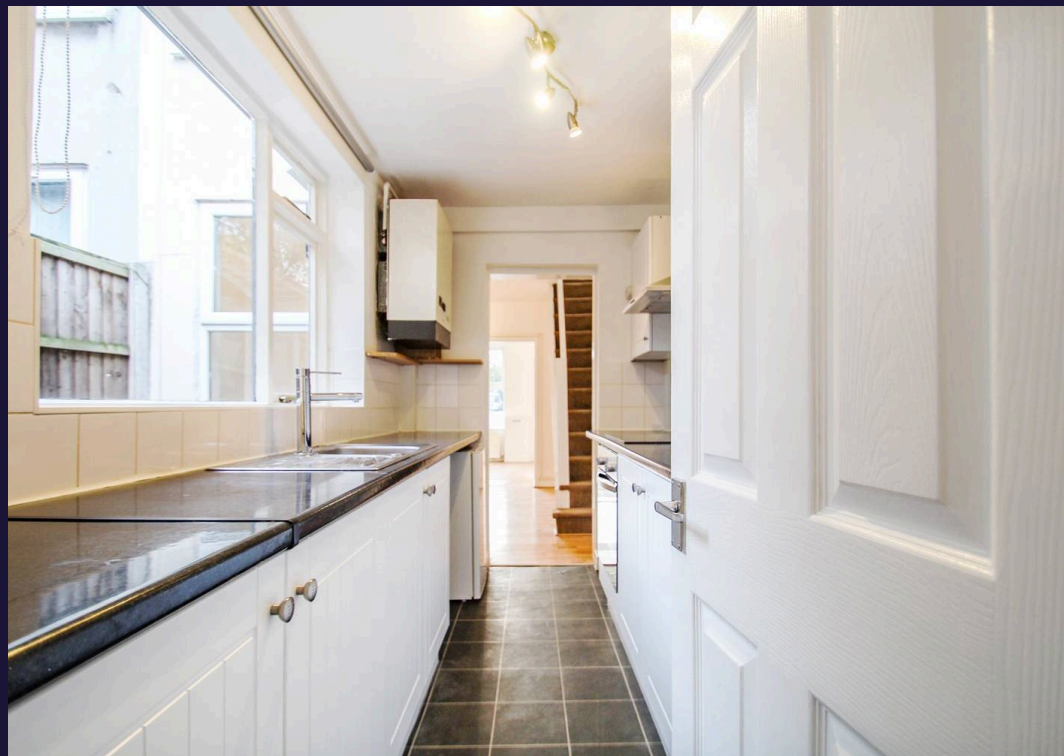
11' 8" x 8' 10" (3.55m x 2.70m)

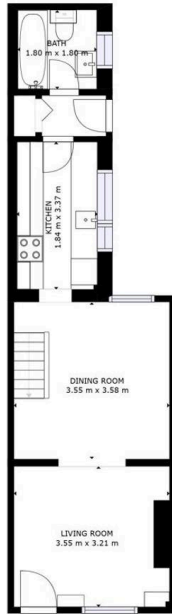
Overlooking the rear yard this room has bright white walls and laminate flooring and a built in airing cupboard.

Bathroom

5' 11" x 5' 11" (1.80m x 1.80m)

On the ground floor this bathroom comes with a shower over the bath, sink, WC and storage cupboard.



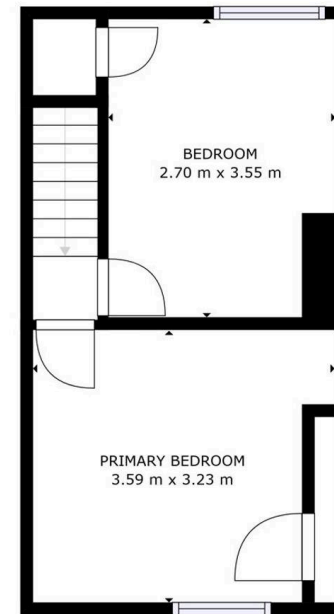


GROSS INTERNAL AREA
FLOOR 1: 37 m², FLOOR 2: 25 m²
TOTAL: 62 m²

SIZES AND DIMENSIONS ARE APPROXIMATE, ACTUAL MAY VARY.



FLOOR 1



GROSS INTERNAL AREA
FLOOR 1: 37 m², FLOOR 2: 25 m²
TOTAL: 62 m²

SIZES AND DIMENSIONS ARE APPROXIMATE, ACTUAL MAY VARY.



FLOOR 2



Comfort Estates

Comfort Estates, 47 Derby Road - NG1 5AW

0115 9338997 • info@comfortestates.co.uk • www.comfortestates.co.uk