



11 Cheevor Place Hewett Close, Newton Abbot

Newton Abbot

Guide Price £425,000

ABSOLUTE





## 11 Cheevor Place Hewett Close

Newton Abbot, Newton Abbot

Presenting a well-maintained four bedroomed detached house in a residential area. Family-friendly with well proportioned rooms, off-road parking, integral garage, lovely rear garden with open views.

Council Tax band: E

Tenure: Freehold

EPC Energy Efficiency Rating: C

EPC Environmental Impact Rating:

- Detached house presented on good order throughout with four double bedrooms
- Family friendly kitchen/dining/living room opening into rear garden
- Additional separate lounge
- Ground floor cloakroom and utility room
- Four first floor bedrooms, main bedroom with en-suite shower room
- Family bathroom
- Ample off road parking for three cars
- Integral garage with power and light
- Good size rear garden with lovely open views towards the River Teign
- Quiet residential location on outskirts of town, Chain free option





# 11 Cheevor Place Hewett Close

Newton Abbot, Newton Abbot

Quiet cul de sac position. Popular residential location being convenient for access out of town

## Absolute Sales & Lettings

Absolute Sales & Lettings, 27 Hyde Road - TQ4 5BP

01803 890110

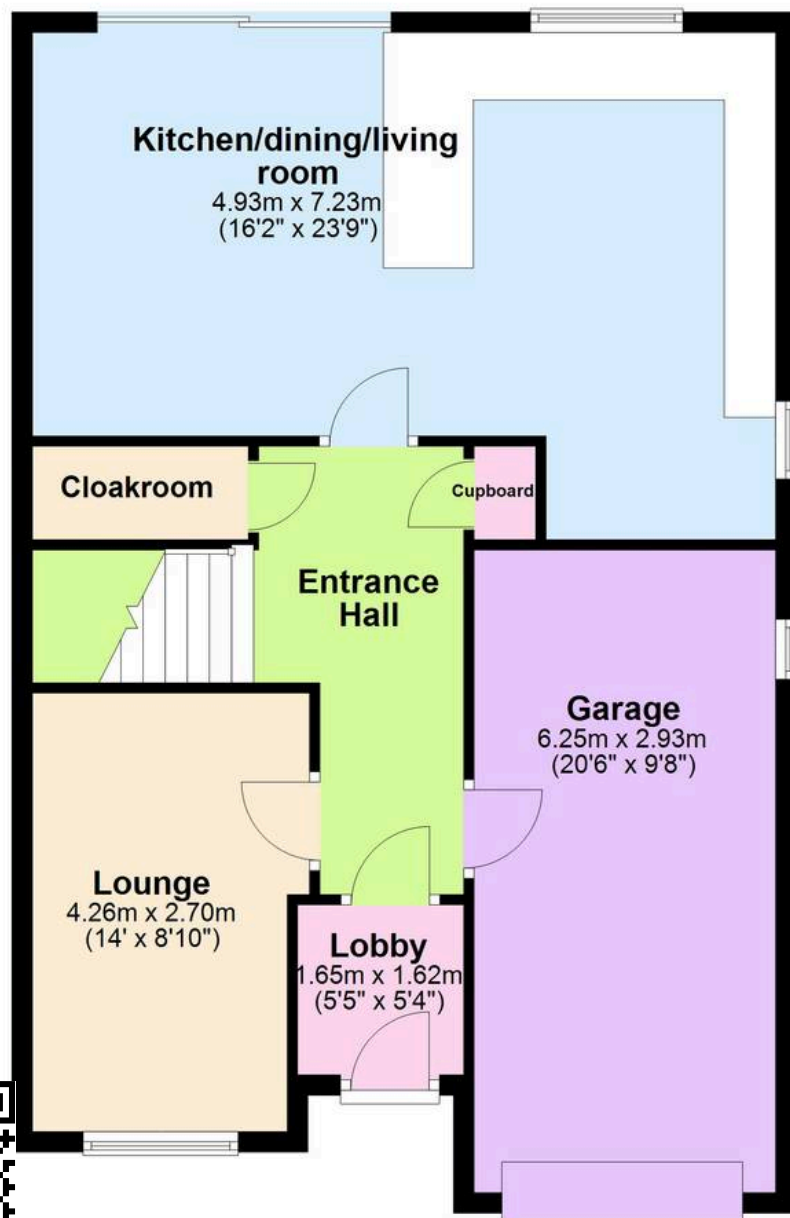
[paignton@movewithabsolute.co.uk](mailto:paignton@movewithabsolute.co.uk)

<http://www.movewithabsolute.co.uk>



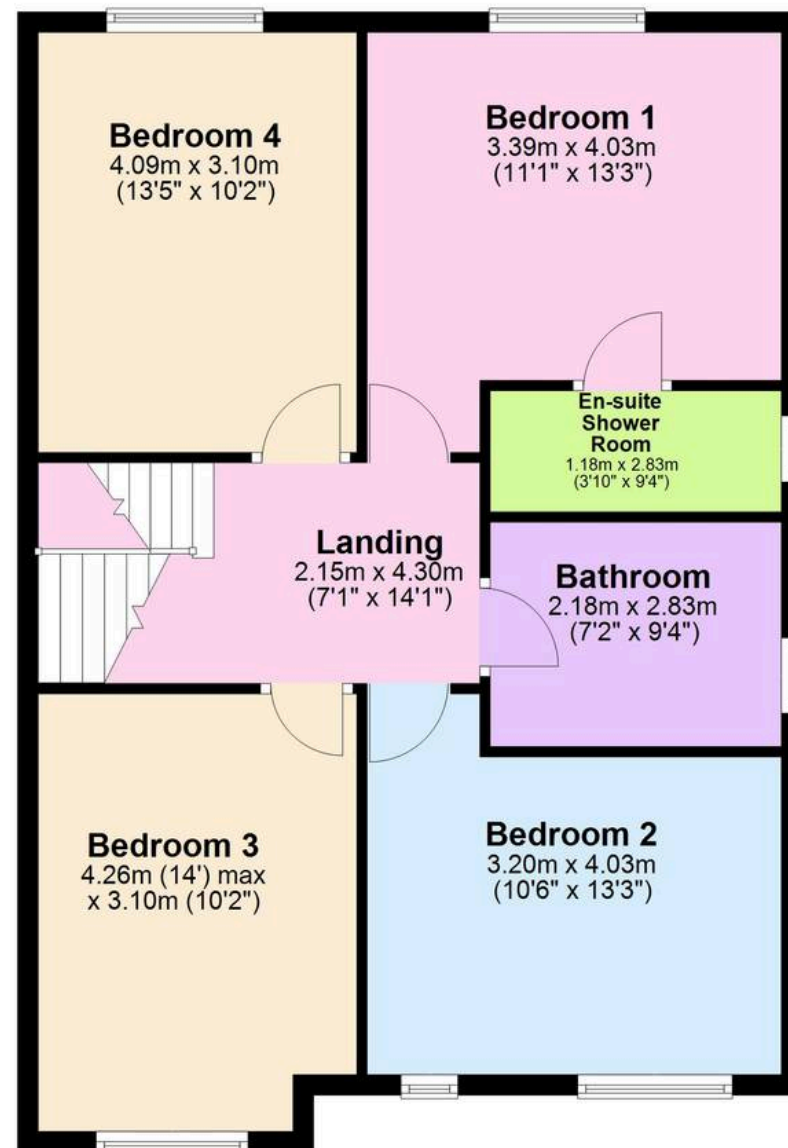
## Ground Floor

Approx. 78.7 sq. metres (847.4 sq. feet)



## First Floor

Approx. 75.0 sq. metres (807.2 sq. feet)



Total area: approx. 153.7 sq. metres (1654.6 sq. feet)

