



ENNISMORE GARDENS

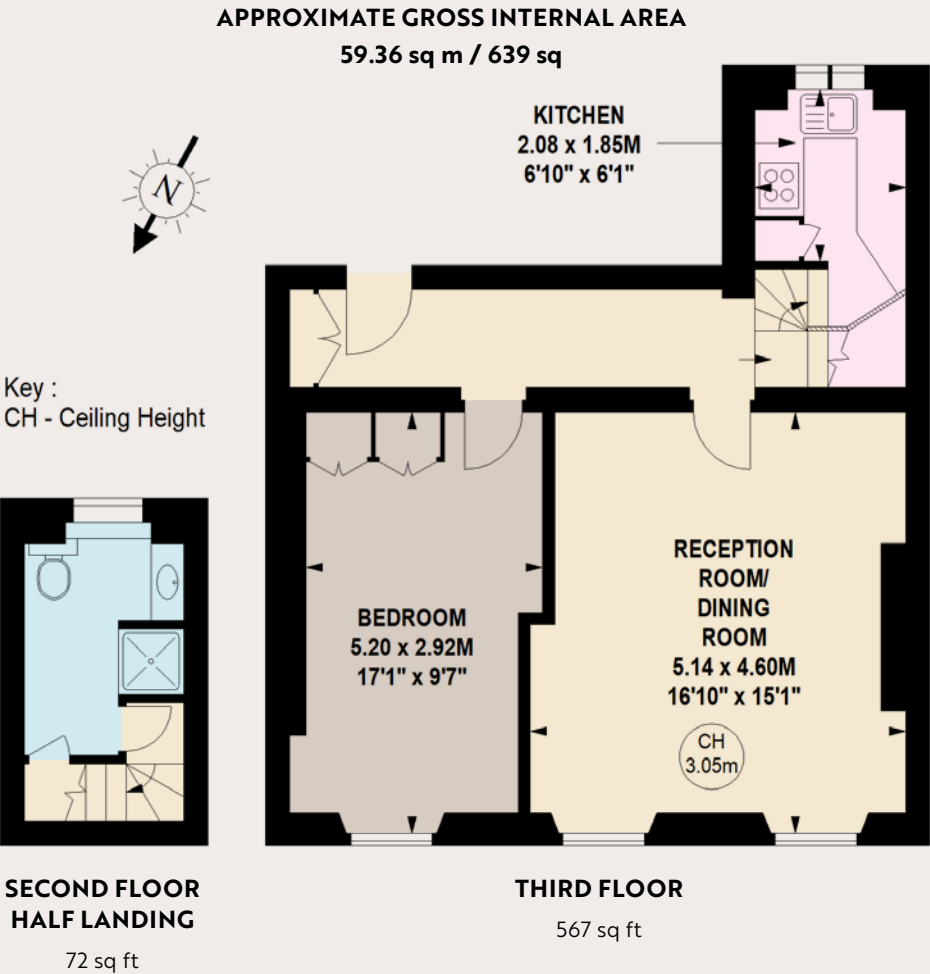
LONDON SW7

A charming one bedroom flat on the third floor (with lift) of this imposing period conversion backing onto lovely communal gardens. The flat now in need of some updating has been a rental investment for the owners for many years and would also make an excellent pied-à-terre.



This is a prime location between Hyde Park and Harrods, close to other excellent facilities in Knightsbridge and South Kensington and a short walk from Hyde Park.

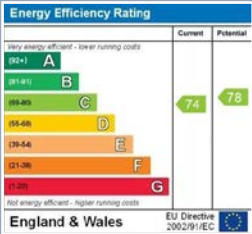
- Double Bedroom ■ Bathroom
- Reception Room
- Kitchen ■ Lift



PRICE £825,000

TENURE Leasehold with 986 Years Remaining

SERVICE CHARGE TBC



www.nicolasvanpatrick.com

These details have been prepared for general guidance only and should not be relied upon by prospective purchaser/ tenants who before proceeding must check and otherwise satisfy themselves as to the property and the nature, state and availability of any facility or service.