



Easy Home
Lets & Sales

Easy Home Sales

Independent Residential Sales Agents

312 The Green, Eccleston
PR7 5TP

- Village Location
- Two Bedroom Cottage
- Garden Fronted
- Garden Area To Rear

Offers Over £185,000

EPC Rating 'TBC'



Easy Home
Lets & Sales



Easy Home
Lets & Sales



Property Description

Set in one of Eccleston's most desirable locations, this beautifully presented two-bedroom cottage offers a perfect blend of period character and modern comfort, with its charming setting, thoughtfully maintained interior and excellent village location, this cottage is an ideal choice for first-time buyers, downsizers or anyone seeking a cosy character home in the heart of Eccleston. The property enjoys an enviable position surrounded by charming homes and a welcoming community atmosphere.

The cottage features an inviting living room that provides a warm and comfortable space to relax, along with a fitted kitchen with living/dining room area designed to make the most of the available space. Upstairs, two well-proportioned bedrooms offer plenty of natural light, making them ideal for a couple, small family or visiting guests. The spacious bathroom provides a shower over bath, W/C and basin.

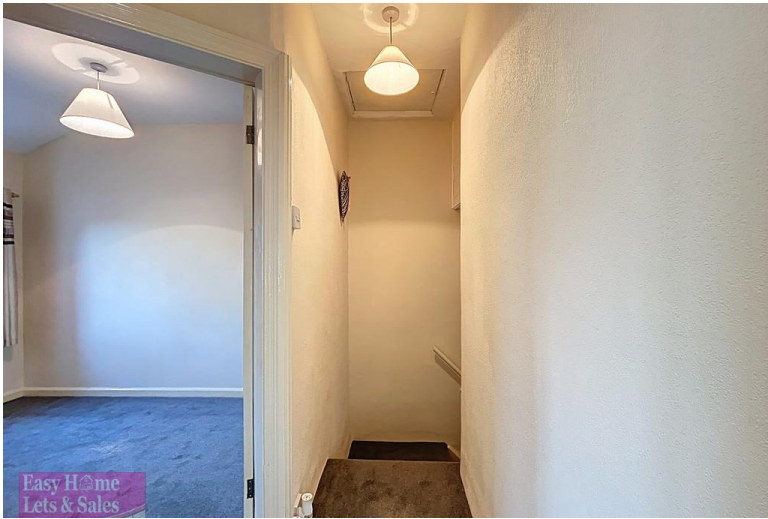


Please note:

Room and land measurements given in these property details are approximate and are supplied as a guide only and should be verified by the buyer's solicitor. We would advise that all services, appliances and heating facilities be confirmed in working order by an appropriately registered service company or surveyor on behalf of the buyer as Easy Home Sales cannot be held liable for any faults found. No responsibility can be accepted for any expenses incurred by prospective purchasers.







159 - 161 Spendmore
Lane
Coppull
Chorley
Lancashire

www.easyhomelets.co.uk
info@easyhomelets.co.uk
01257 791888

Agents Note: Whilst every care has been taken to prepare these sales particulars, they are for guidance purposes only. All measurements are approximate are for general guidance purposes only and whilst every care has been taken to ensure their accuracy, they should not be relied upon and potential buyers are advised to recheck the measurements