



Beech Drive, Trumpington

+44 (0) 1223 508050

lettings@cookecurtis.co.uk

www.cookecurtis.co.uk

A first floor bright and modern one-bedroom apartment, with lift. Perfectly positioned for convenient living and ideal for professionals, particularly those working at Addenbrooke's.

£1,500 pcm

Beech Drive, Cambridge,
CB2 9PQ



This modern one-bedroom first-floor apartment is perfectly positioned for convenient living and ideal for professionals, particularly those working at Addenbrooke's.

Stepping inside, the entrance hall offers a generous built-in storage cupboard which also houses the washing machine, keeping the living areas clutter-free. From the hall, you're led into a spacious and inviting open-plan living room and kitchen, flooded with natural light from full-height windows and sliding doors.

The living area comfortably accommodates both lounge and workspace setups and opens directly onto a private balcony, offering leafy views and a perfect spot to unwind on warm evenings.

The stylish kitchen is fully equipped with integrated appliances, including a built-in microwave, dishwasher, fridge freezer, oven, and hob, along with ample countertop and storage space.

The double bedroom is well-proportioned, featuring large windows and fitted mirrored wardrobes, providing excellent storage while keeping the room light and airy.

A contemporary bathroom completes the internal accommodation, fitted with a shower over bath, sleek tiling, and modern sanitaryware.

Externally, the property benefits from an allocated parking space and extensive bike rails, making it an excellent choice for commuters and cyclists.







43sqm / 525sqft

1 bed, 1 bath, 1 recep

EPC - C / 74

Council tax band - B

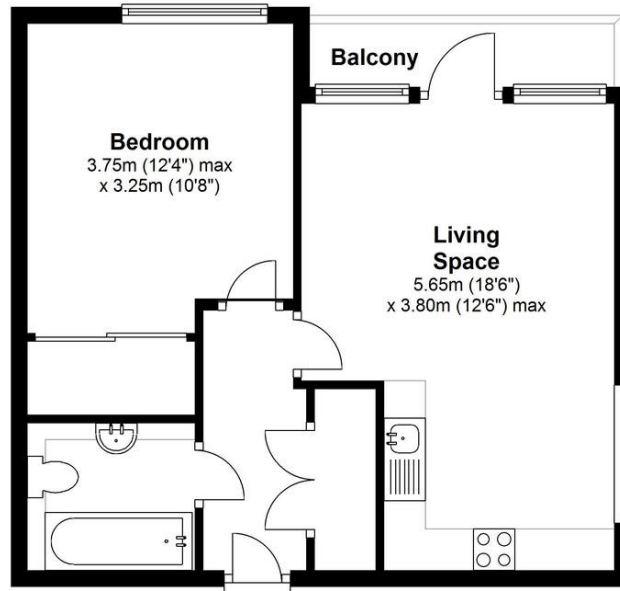
Gas central heating

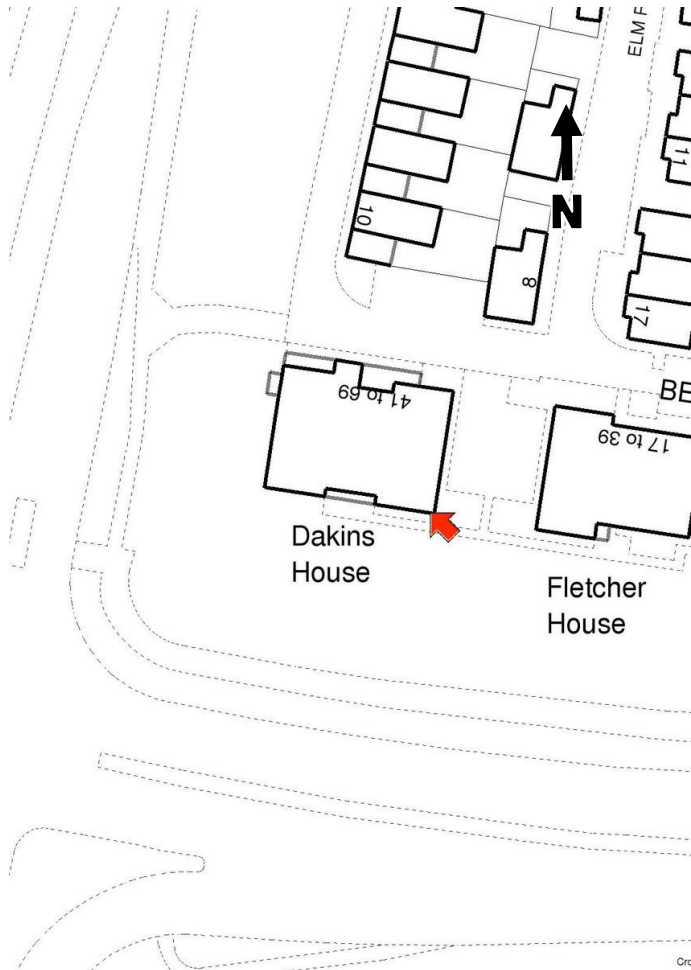
Allocated parking

Unfurnished

Available January 2026







Trumpington is a thriving, fast growing part of the City that still manages to retain its village identity and sense of community. It is exceptionally well located for access into the Addenbrooke's campus, out to the M11 and into the City by car, bus, guided bus, one of a few purpose built cycle routes, or even an enthusiastic walk. The City's mainline station can be easily reached along the guided busway cycleway without having to mix with car traffic at all. The area has two primary schools with a brand new state-of-the-art secondary school opening in 2016 which will also bring excellent sporting facilities. A number of Private schools are within cycling distance. There are also various restaurants, pubs, shops, a post office, hairdresser, surgery, chemist, Waitrose supermarket and two new country parks.

COOKE
CURTIS
& CO