



11 Craven Court Mill Lane, Romford – RM6 6RU

£300,000 Leasehold

Modern kitchen with integrated appliances • Communal garden • Contemporary walk-in shower • Large windows with abundant natural light • Secure entry • Ready to move in • Over 120 years lease • Close to the A12 near the Moby Dick • 3 Bedroom First Floor Purpose Built Flat with Own Garage



**HIGHCASTLE
ESTATES**

020 3411 7753
ilford@hceuk.com

Modern three-bedroom first-floor flat with spacious interiors, integrated kitchen, secure entry, garage, and long lease. Convenient location near A12 and amenities. Ready to move in.

Council Tax band: C

Tenure: Leasehold

EPC Energy Efficiency Rating:

EPC Environmental Impact Rating:



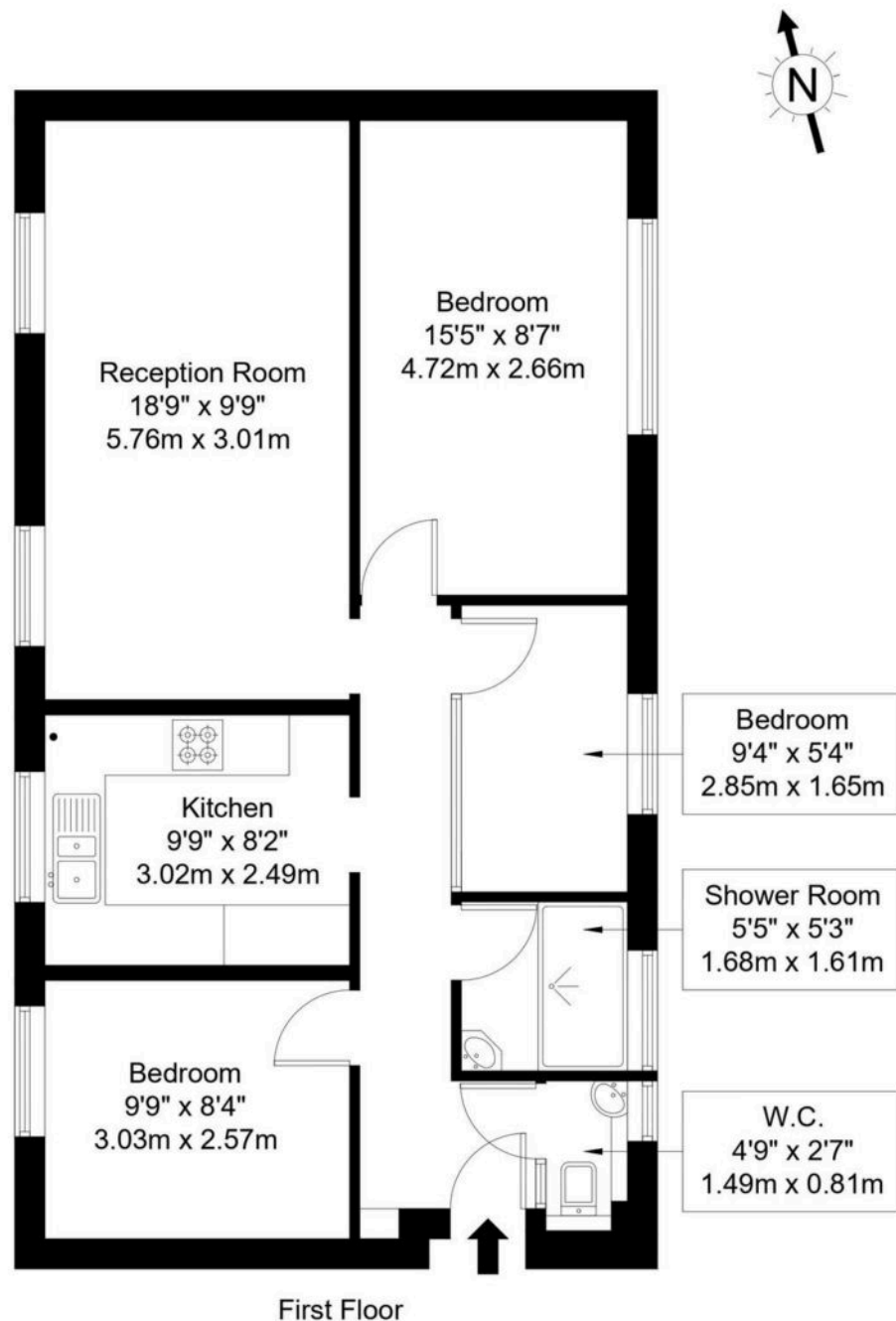
- › Modern kitchen with integrated appliances
- › Communal garden
- › Contemporary walk-in shower
- › Large windows with abundant natural light
- › Secure entry
- › Ready to move in
- › Over 120 years lease
- › Close to the A12 near the Moby Dick
- › 3 Bedroom First Floor Purpose Built Flat with Own Garage





Mill Lane, RM6 6RU

Approx Gross Internal Area = 63.88 sq m / 688 sq ft



Ref :

Copyright

**B L E U
P L A N**

The Floor plan is not to scale and measurements and areas shown are approximate and therefore should be used for illustrative purposes only. The plan has been prepared in accordance with the RICS code of Measuring Practice and whilst we have confidence in the information produced it must not be relied on. Maximum lengths and widths are represented on the floor plan. If there is any aspect of particular importance, you should carry out or commission your own inspection of the property.

Copyright @ BLEUPLAN

You can include any text here. The text can be modified upon generating your brochure.