



Poppy Lane  
Salford



In Excess of £260,000



# Poppy Lane

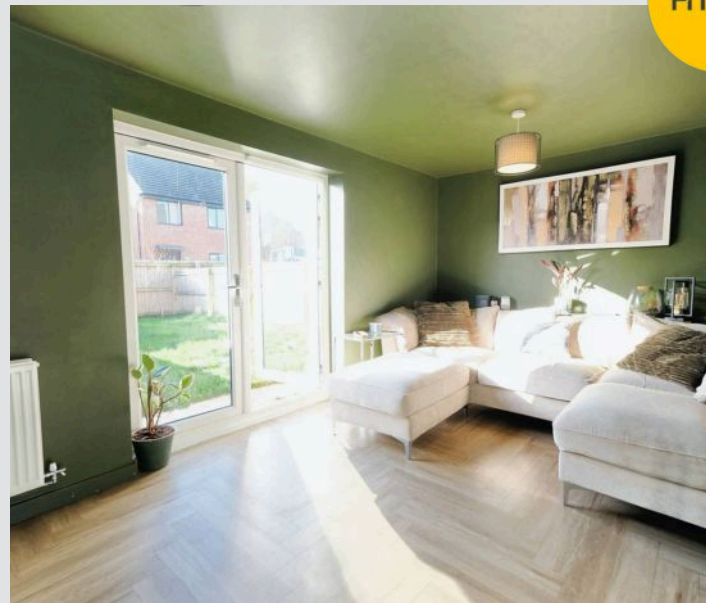
Salford

Beautifully presented two bedroom semi-detached property coming to the market CHAIN FREE! Ideally situated close to SALFORD UNIVERSITY, MANCHESTER CITY CENTRE, EXCELLENT TRANSPORT LINKS AND AMENITIES!

Council Tax band: A

Tenure: Freehold

- Beautifully presented two bedroom semi-detached property coming to the market CHAIN FREE!
- Positioned opposite the River Irwell with stunning views and scenic walks
- Contemporary fitted kitchen diner
- Spacious lounge
- Two double bedrooms
- Modern fitted three-piece bathroom suite and downstairs W.C.
- Off-road parking to the front and a large low maintenance rear garden
- Located close to Salford University and Manchester City Centre!
- Within walking distance to excellent transport links and amenities!



HILLS



**Entrance Hallway**

8' 6" x 5' 7" (2.60m x 1.70m)

**Kitchen/Diner**

16' 10" x 13' 1" (5.14m x 3.99m)

**W.C**

6' 3" x 3' 7" (1.90m x 1.09m)

**Living Room**

10' 4" x 16' 4" (3.16m x 4.97m)

**Bedroom One**

9' 9" x 16' 4" (2.96m x 4.98m)

**Bedroom Two**

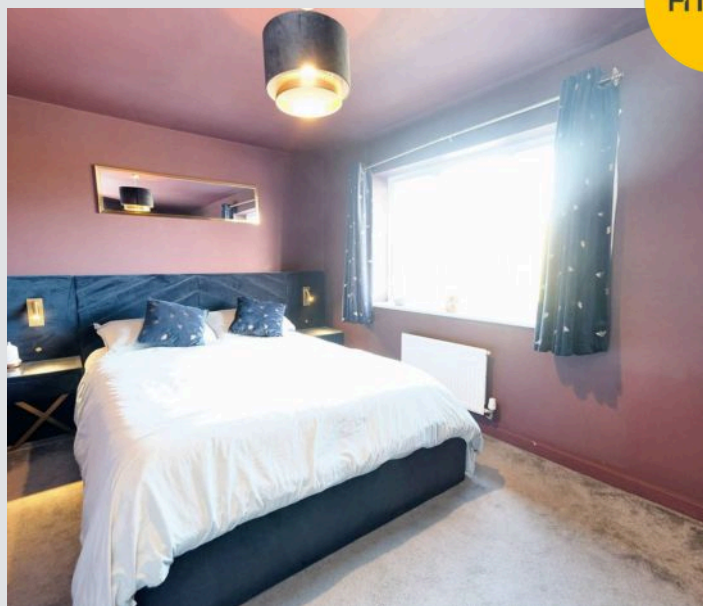
9' 10" x 16' 3" (2.99m x 4.95m)

**Bathroom**

9' 3" x 7' 0" (2.83m x 2.13m)



HILLS

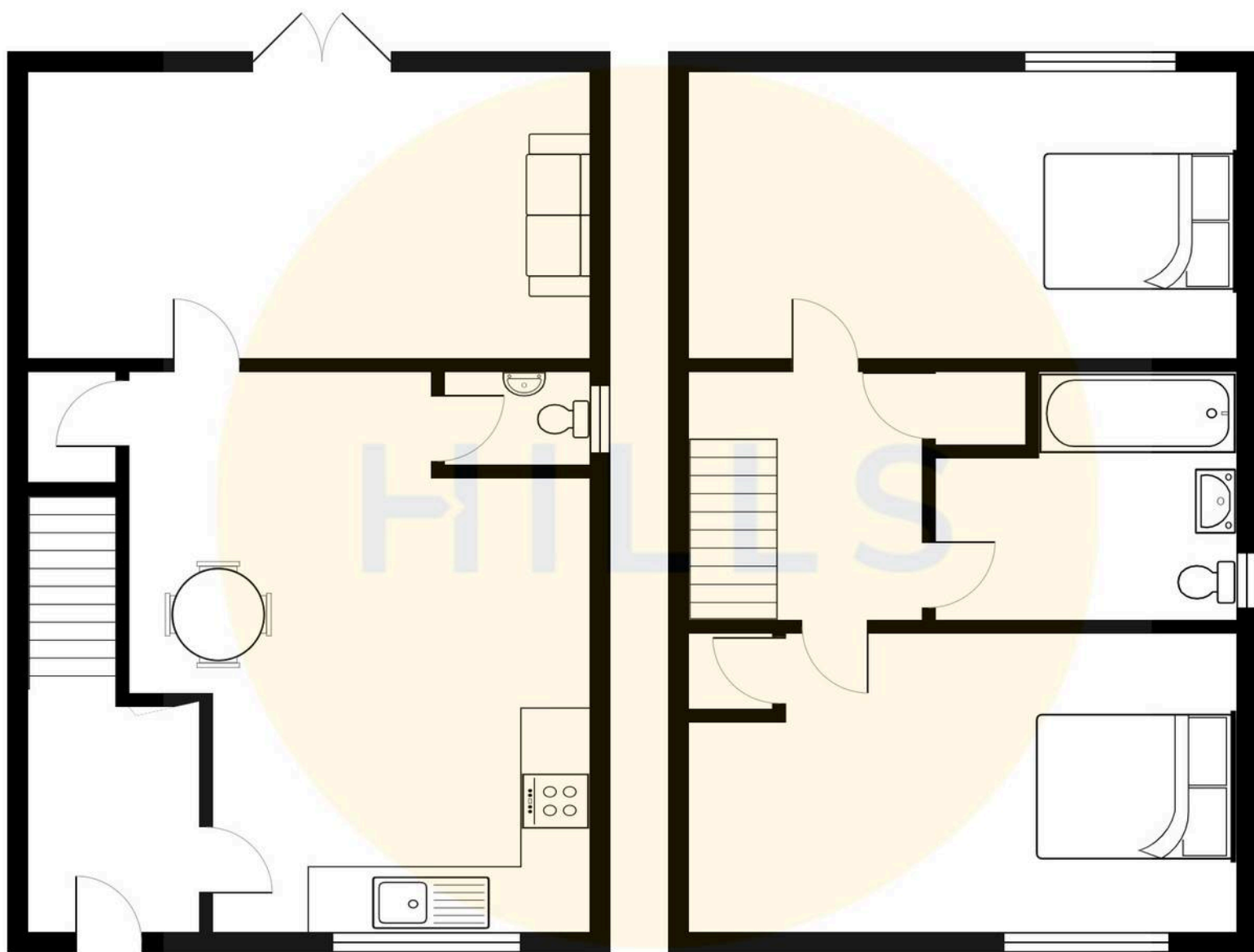






HILLS









## Hills | Salfords Estate Agent

Hills Residential, Sentinel House Albert Street – M30 0SS

0161 707 4900

[sales@hills.agency](mailto:sales@hills.agency)

[www.hills.agency/](http://www.hills.agency/)



By law, we are required to conduct anti-money laundering checks on all potential buyers and sellers. In line with HMRC guidelines, our trusted partner, Coadjute, will securely manage these checks on our behalf. A non-refundable fee of £45 + VAT per person will apply, and Coadjute will handle the payment. Once an offer is accepted, Coadjute will send a secure link for you to complete the biometric checks. These checks must be completed before we can send the memorandum of sale to all parties. PLEASE NOTE: The Agent has not tested any equipment, fixtures, fittings or services so cannot verify that they are in working order or fit for the purpose. References to the properties tenure are based on information supplied by the seller. You are advised to check the availability of this property before travelling any distance to view. Every effort has been made to ensure these particulars are correct and not misleading but their accuracy is not guaranteed nor do they form part of any contract.