



The Russet, The Orchards, Leighwood Fields
£625,000



ROGER COUPE
LAND & NEW HOMES



The Russet

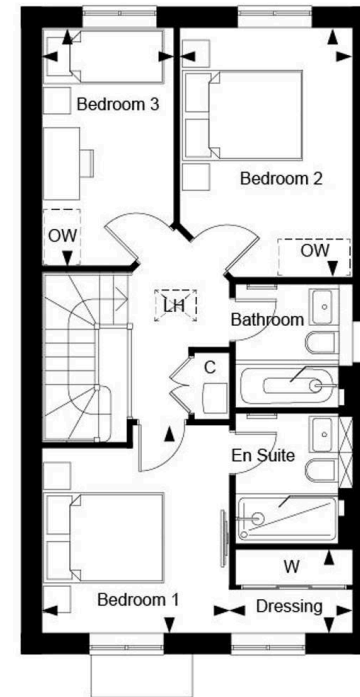
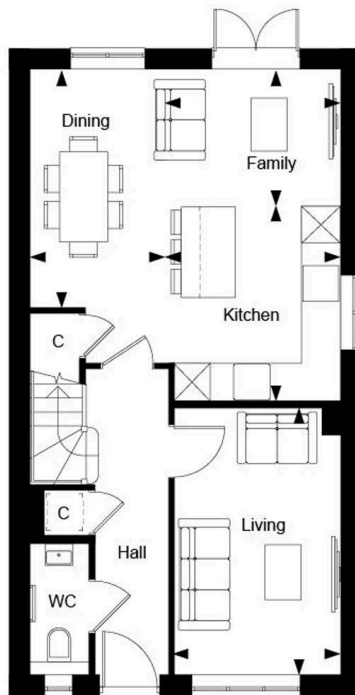
Plot 342 Leighwood Fields

- 3 bedroom 2 bathroom home
- South facing garden * Access to Downs Link and Knowle Country Park
- Open plan kitchen/family/dining area with double doors to the patio and garden
- Separate living room
- 2 further double bedrooms and a single bedroom/office area
- 2 parking spaces
- Principal bedroom with built in wardrobes and en suite
- Residents garden and community orchard
- 10 year NHBC Buildmark Scheme and 2 year Berkeley warranty

Council Tax band: TBD

Tenure: Freehold







Roger Coupe Estate Agent

Roger Coupe Estate Agent, 151 High Street - GU6 8BB

01483268555 • housesales@rogercoupe.com • www.rogercoupe.com

For clarification, these sales particulars have been prepared as a general guide. Room sizes are approximate and we have not carried out a detailed survey, nor tested any appliances, equipment, fixtures or services, so cannot verify that they are in working order, or fit for their purpose.