

68-69

Great

Russell

Street

Bloomsbury WC1

For Sale 947 – 1,896 sq ft



# Executive Summary

Prime Bloomsbury location opposite the British Museum
Two self-contained units of 947 and 949 sq ft each, totalling 1,896 sq ft
Available individually or together
New 250-year leases with £250 ground rent per annum
Self-contained E Class commercial use building
Offered with vacant possession
Attractive period frontage with modern interior potential
Offers invited in excess of £595,000 per unit, or a combined total of £1,190,000.





The Building

# A Hidden Gem in the Heart of Bloomsbury

RODIĆ DAVIDSON  
ARCHITECTS

AUSTIN/DESMOND FINE ART

AUSTIN/  
DESMOND  
FINE ART

AUSTIN/DESMOND FINE ART

MUSEUM  
DENTAL SUITES

Just steps from the British Museum and moments from Holborn and Tottenham Court Road stations, 68–69 Great Russell Street offers an adaptable workspace split over two floors in a superb location.

Blending classic Bloomsbury character with modern design potential, the building offers a distinctive and adaptable environment for occupiers seeking something special.

68 — 69 Great Russell Street



The Building

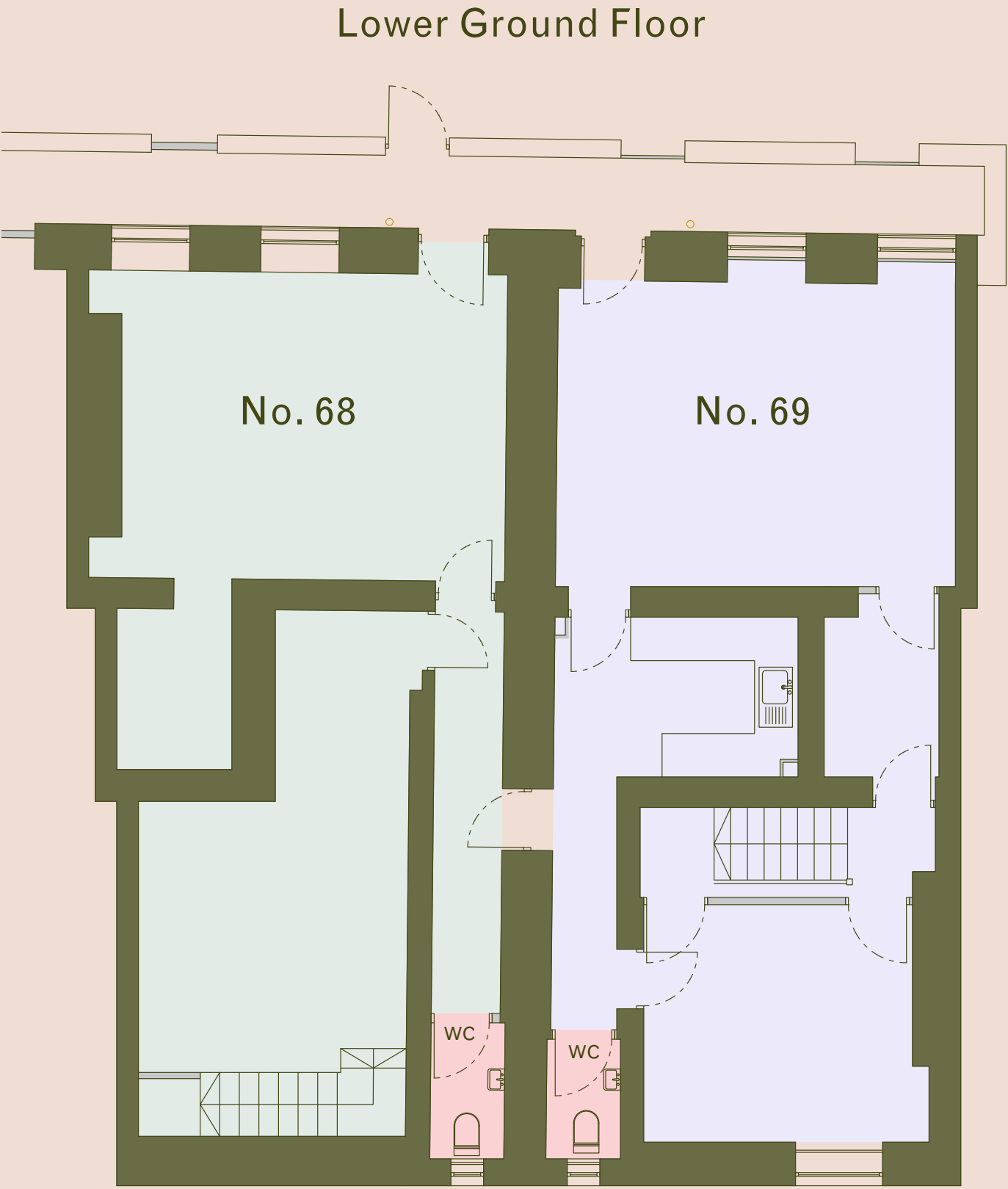
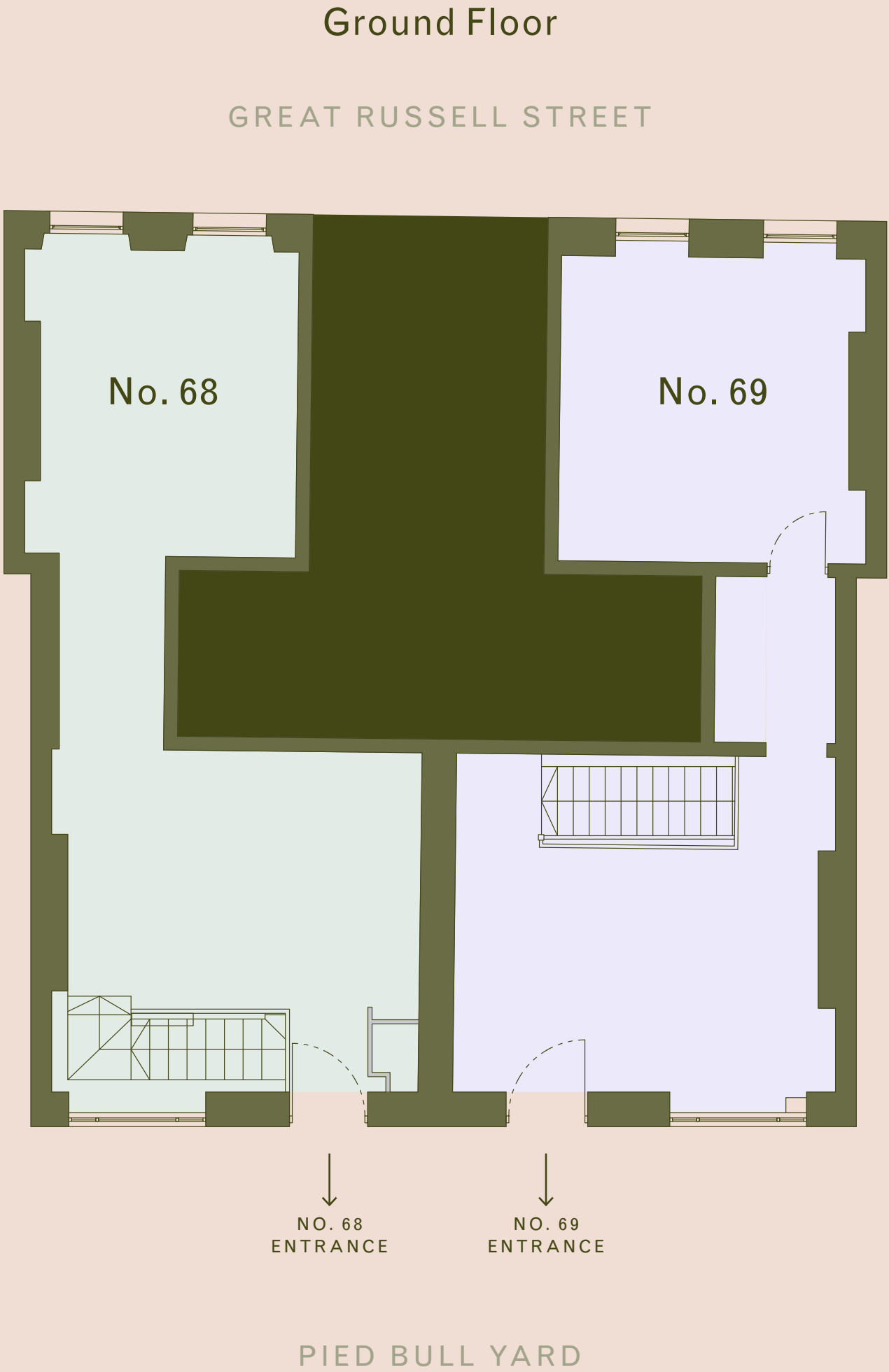








Building	Floor	Sq M	Sq Ft
No.68	Ground	41.2	443
	Lower Ground	46.8	504
No.69	Ground	42.3	455
	Lower Ground	45.9	494
Total		176.2	1,897





Location

# The heart of Bloomsbury



Bloomsbury is where London's literary legacy meets contemporary city life. Framed by garden squares and Georgian terraces, the area has long attracted thinkers, creators, and professionals drawn to its cultural depth and timeless charm. Today, it's home to a thriving mix of occupiers, from global media firms to boutique galleries and stylish cafés — all within a few minutes' walk of the British Museum, Holborn, and Tottenham Court Road.





Location

The Neighbours

- 1. Google
- 2. Apollo
- 3. Gardiner & Theobald
- 4. Skyscanner
- 5. Bloomsbury Publishing
- 6. Facebook
- 7. McKinsey
- 8. The British Museum
- 9. GSK
- 10. Mediacom

Retail

- 1. Orchidya
- 2. The Printing Centre
- 3. Decadence Salon
- 4. Cyclefit Store Street
- 5. Store Street Opticians
- 6. Iris Avenue
- 7. Treadwells Bookshop
- 8. Russell and Chapple
- 9. Store Street Framing
- 10. Heals
- 11. Warhammer

Food & Drink

- 1. Fitz Bar
- 2. Dalloway Terrace
- 3. Store Street Espresso
- 4. Caffè Tropea
- 5. London Cocktail Club
- 6. Circolo Popolare
- 7. Riding House Bloomsbury
- 8. Ronnie Scott's
- 9. SKZO
- 10. Café Deco
- 11. Amelie's Wine House
- 12. The Life Goddess
- 13. Pentole e Padelle

Garden Squares

- 1. Bloomsbury Square Gardens
- 2. Russell Square Gardens
- 3. Bedford Square Gardens
- 4. Brunswick Square
- 5. Tavistock Square
- 6. Gordon Square
- 7. Red Lion Square
- 8. Lincoln's Inn Fields
- 9. Soho Square
- 10. Fitzroy Square





## Contact

Elliott Stern  
es@compton.london  
07834 918 700

Joshua Miller  
jm@compton.london  
07917 725 365



---

**Offers invited in excess of  
£595,000 per unit, or a combined  
total of £1,190,000.**