



Mackeson Road, London, Nw3  
£2,400 pcm



## Mackeson Road, London, Nw3

Available from February, this charming two-double-bedroom property offers modern living in one of London's most desirable locations. The home features a bright open-plan reception and kitchen area, perfect for both relaxing and entertaining, with excellent natural light throughout.

Council Tax band: TBD

Tenure: Leasehold

EPC Energy Efficiency Rating: D

EPC Environmental Impact Rating: D

- Private Garden
- Available February
- Two double bedrooms
- Ground floor
- Desirable location



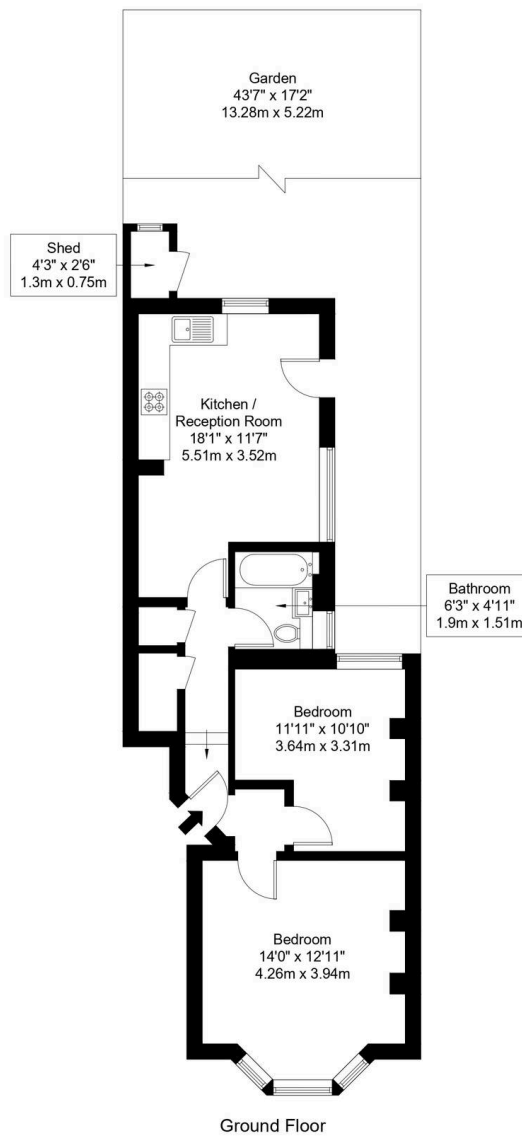
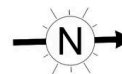






# Mackeson Road, NW3 2LU

Approx Gross Internal Area = 55.8 sq m / 601 sq ft



Ref :

Copyright

**B L E U**  
**P L A N**

The Floor plan is not to scale and measurements and areas shown are approximate and therefore should be used for illustrative purposes only. The plan has been prepared in accordance with the RICS code of Measuring Practice and whilst we have confidence in the information produced it must not be relied on. Maximum lengths and widths are represented on the floor plan. If there is any aspect of particular importance, you should carry out or commission your own inspection of the property.

Copyright @ BleuPlan





## Black Katz

22 West Hampstead Mews, London - NW6 3BB

02073285000 • [Thomas@blackkatz.com](mailto:Thomas@blackkatz.com) • [blackkatz.com/](http://blackkatz.com/)