



PERIOD
HOMES

Stonehill Road, Roxwell. CM1 4PQ

Guide Price £900,000

Stonehill Road

Roxwell, Chelmsford

Guide Price - £900,000 - £1,000,000 A beautifully presented character detached family home set in the heart of the sought-after village of Roxwell, Mill Cottage perfectly blends period charm with contemporary living.

Council Tax band: TBD

EPC Energy Efficiency Rating: E

EPC Environmental Impact Rating: E

- Beautifully presented character detached four bedroom home
- Period charm with contemporary living Impressive frontage with ample parking
- Outbuilding with gym & garage
- Period charm with contemporary living
- A landscaped garden to one side & a charming courtyard garden to the other





27 Stonehill Road

Roxwell, Chelmsford

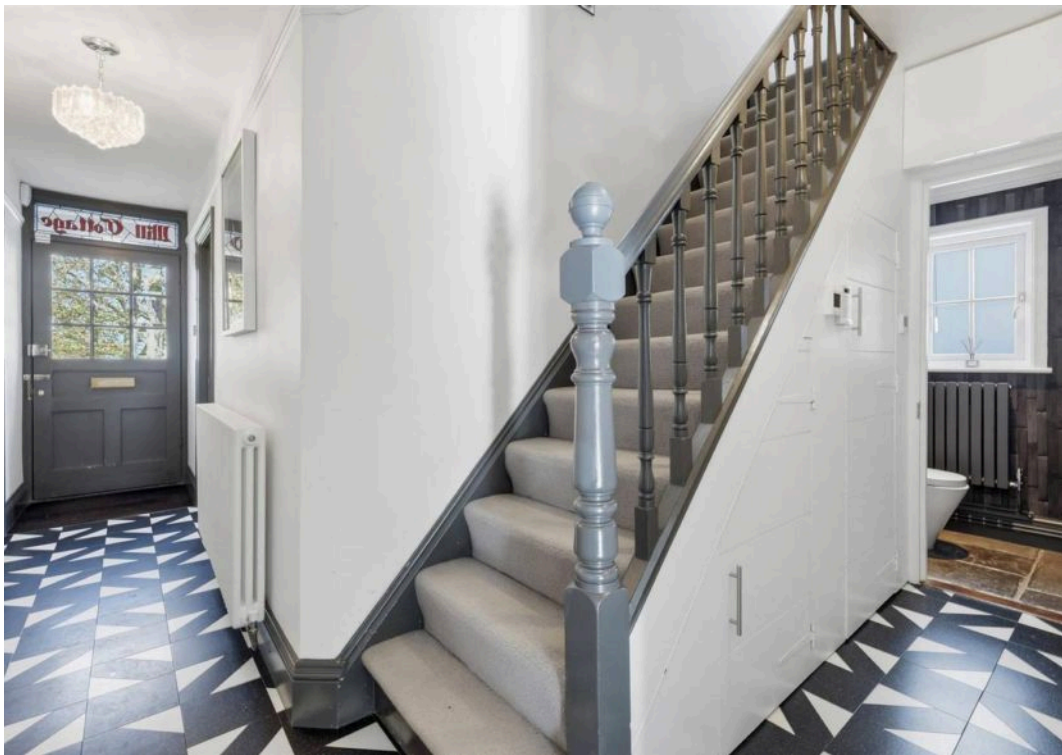
Guide Price - £900,000 - £1,000,000

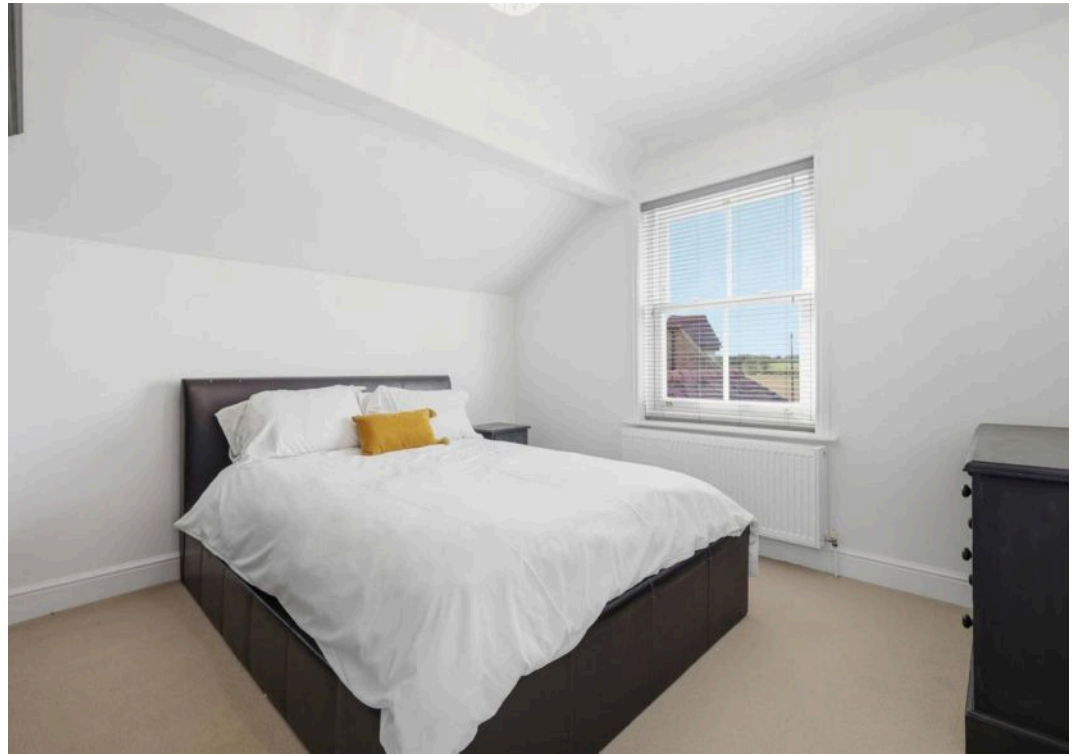
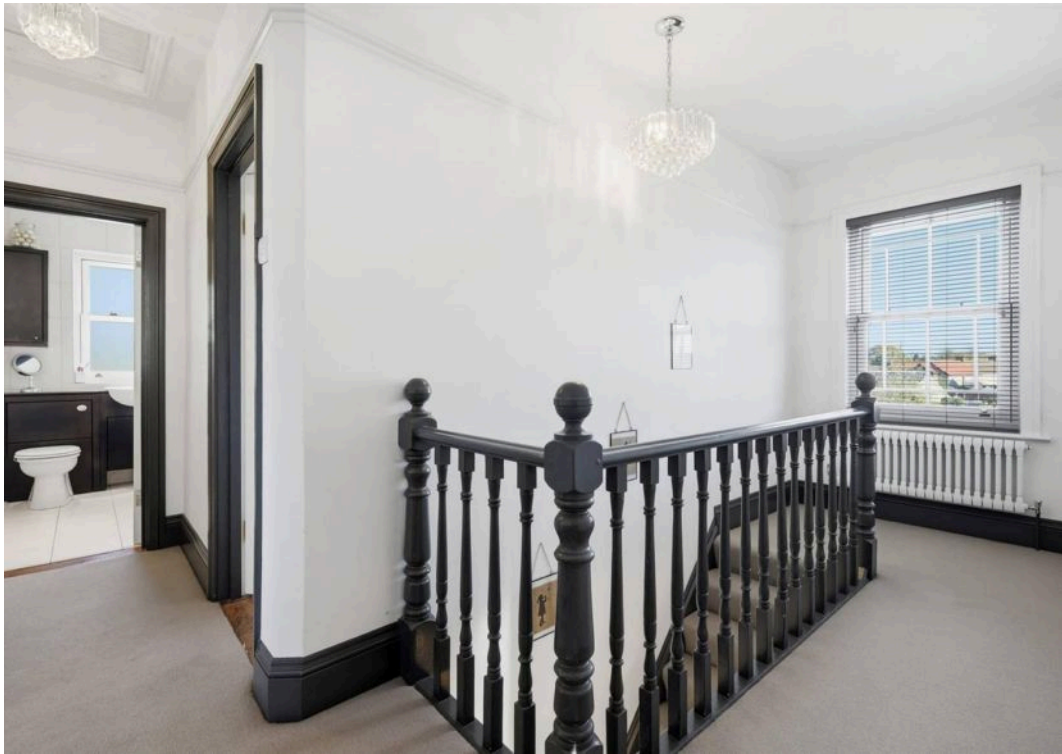
A beautifully presented character detached family home set in the heart of the sought-after village of Roxwell, Mill Cottage perfectly blends period charm with contemporary living. Built on the historic site of the old village windmill, this distinctive home offers an exceptional setting rich in local heritage and surrounded by picturesque countryside views.

Approached via an impressive frontage that provides ample parking, the property immediately conveys a sense of warmth and quality. Inside, the spacious and light-filled accommodation flows effortlessly, creating an ideal environment for both family life and entertaining. The welcoming entrance hall leads to a charming reception room with a bay window, and a versatile office or snug for those seeking a peaceful workspace. To the rear, the stylish kitchen and dining area form the true heart of the home – beautifully designed with modern fittings while retaining a timeless feel. French doors open directly onto the landscaped garden, offering a wonderful space for alfresco dining or relaxed evenings outdoors.

Upstairs, the first floor provides four generous bedrooms, including a principal suite with a dressing area and en-suite shower room. Each bedroom is thoughtfully appointed, offering comfort and style in equal measure. A well-fitted family bathroom completes the accommodation.









STONEHILL ROAD

Approx. Gross Internal Area 195.2 Sq M (2101.4 Sq Ft)

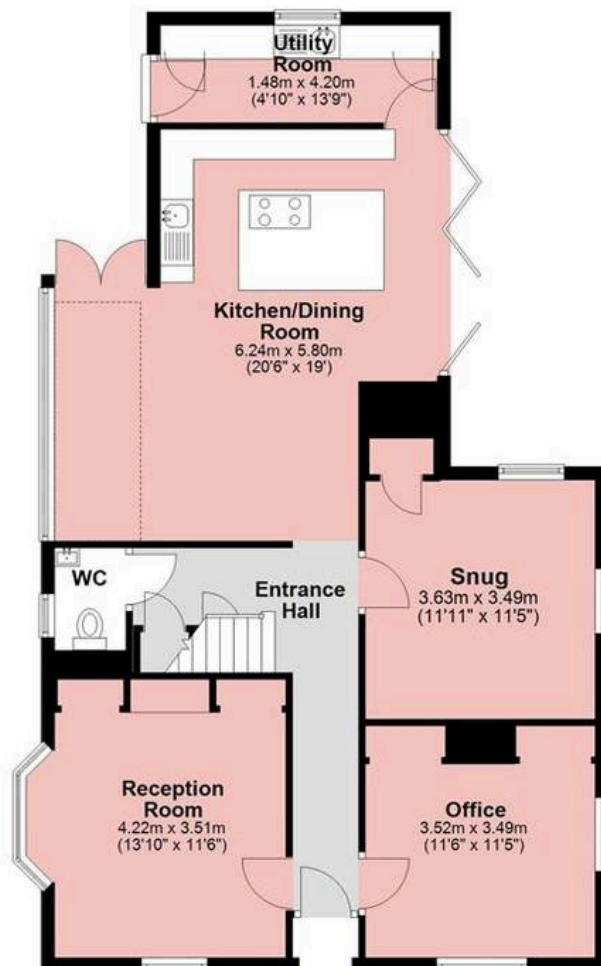


PERIOD
HOMES



Ground Floor

Approx. 92.8 sq. metres (999.4 sq. feet)



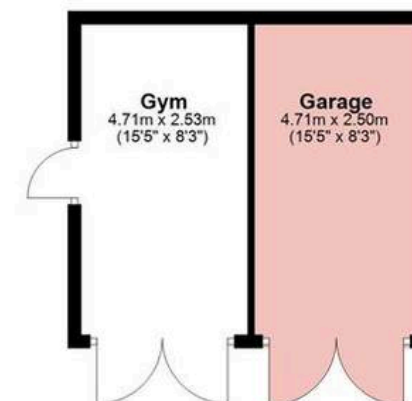
First Floor

Approx. 78.2 sq. metres (842.3 sq. feet)



Outbuilding

Approx. 24.1 sq. metres (259.8 sq. feet)



Measurements are approximate and for illustration purposes only. While we do not doubt the accuracy and completeness, we advise you conduct a careful independent assessment of the property to determine monetary value.

About Us

From charming cottages to country estates, all our homes have a story to tell. 'Period Homes' is one of a kind, an agency dedicated to the sale of character and period properties across Essex.

If you would like to buy a period home but you have a modern home to sell first, we can assist via our sister company, Walkers, which just so happens to have been voted Britain's Best Estate Agency in the British Property Awards. That way, both elements of your move are in the very best of hands.

Get In Touch



Browse Properties



PERIOD
HOMES

Pst... Have you heard of
discreet marketing?

Many people lose out on their dream home to someone in a better position.

Often, it is because they have delayed putting their house on the market, preferring to find somewhere first and then sell.

That is why we have innovated a totally unique and high confidential moving home solution to put you in a competitive position.

Let us find you a buyer without any advertising or pressure and without the neighbours knowing.

Your secret is safe with us...

Get in touch for a
complimentary valuation.

Looking To Sell Or Let Your Home?

Book your free valuation to see how much your home is worth.

Contact Us

01277 288000



Our Website

periodhomes.co.uk



Our Address

Eaton House

High Street

Ingestone

CM4 9DW

