



Rye Walk

Ingatestone, Ingatestone

Situated in a quiet cul-de-sac position within walking distance of Ingatestone village is this rarely available and deceptively spacious four bedroom detached family home.

Council Tax band: E

Tenure: Freehold

EPC Energy Efficiency Rating: D

EPC Environmental Impact Rating: D

- Village Location
- Four Bedrooms
- Double Garage
- No Onward Chain





Rye Walk

Ingatestone, Ingatestone

Situated in a quiet cul-de-sac position within walking distance of Ingatestone village is this rarely available and deceptively spacious four bedroom detached family home, offering opportunity to remodel if required. Offering excellent versatile accommodation, with we believe added potential to extend if desired.

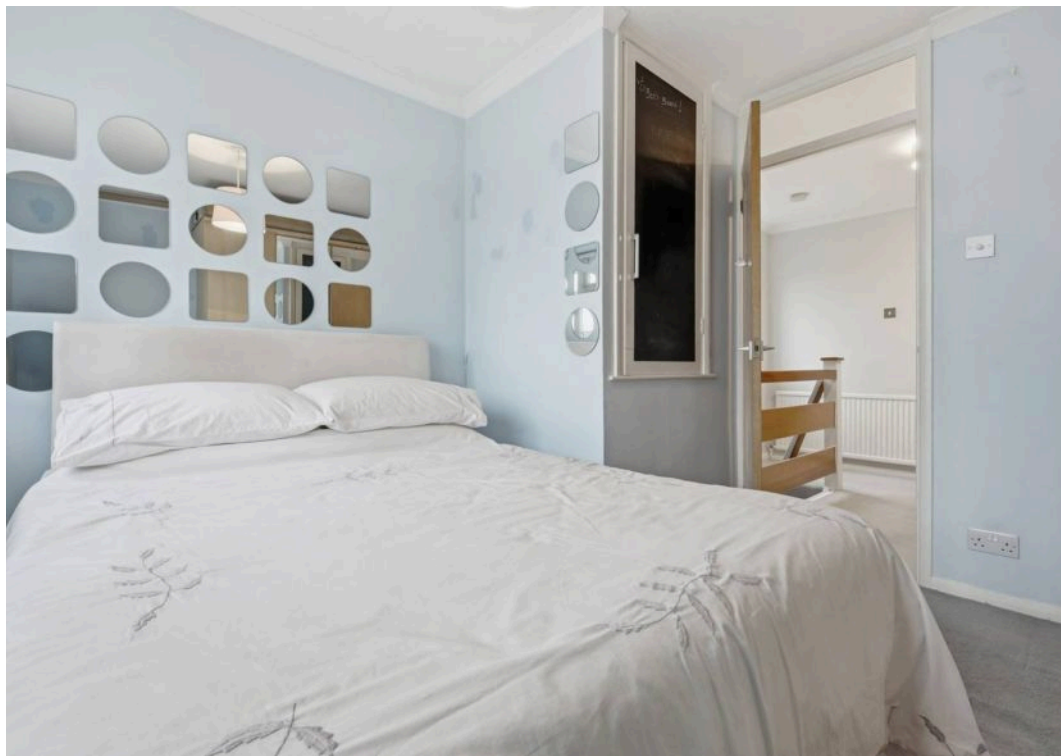
Approached via a beautifully maintained front garden with potential to provide parking for several vehicles together with a double garage to the rear of the property.

The ground floor commences with a welcoming hallway leading to a spacious lounge with a feature bay window overlooking the front elevation, open from here into the dining room with patio doors onto the garden. The kitchen is well fitted with a range of units and some fitted appliances. A convenient door from the kitchen opens on to the side elevation giving access to the garden and front driveway. There is also a ground floor cloakroom.

To the first floor you are welcomed with a large landing area and access to the loft. The master bedroom and bedroom two overlook the rear elevation, with the master having an ensuite shower room. Bedroom three and four lay to the front of the home with the three piece bathroom being centrally located to all. Three of the four bedroom have large storage cupboards.

To the exterior there is a pleasing and unoverlooked rear garden, commencing with a paved patio ideal for outdoor dining and









Total area: approx. 155.7 sq. metres (1675.9 sq. feet)

All measurements have been taken as a guide to prospective buyers only and are not precise. This plan is for illustrative purposes only and no responsibility for any error, omission or misstatement. The services, systems and appliances shown have not been tested and no guarantee as to their operability or efficiency can be given. Measurements may have been taken from the widest area and may include wardrobe/cupboard space. No guarantee is given to any measurements including total areas. Buyers are advised to take their own measurements.

Plan produced using PlanUp.

Rye Walk

About Us

Walkers | People & Property is built on a lifelong family passion for homes. Martin, Gillian and Adam Walker lead a respected, professional team who live and breathe all aspects of property. With over 30 years of experience, we understand the moving process on a personal level and are committed to delivering exceptional results. Most of all, helping people move is our hobby, and handing over the keys to excited buyers remains our favourite moment.

Get In Touch



Browse Properties



Contact Us
01277 355005



Our Website
www.walkersstates.co.uk



Our Address
90 High Street
Ingatstone
CM14 9DW



www.walkersstates.co.uk

Walkers
People & Property

Psst... Have you heard of
Walkers discreet marketing?

Many people lose out on their dream home to someone in a better position. Often, it is because they have delayed putting their house on the market, preferring to find somewhere first and then sell.

That is why we have innovated a totally unique and highly confidential moving home solution to put you in a competitive position.

Let us find you a buyer **without any advertising or pressure** and without the neighbours knowing.

Your secret is safe with us....

Get in touch for a **complimentary** valuation.
Looking To Sell Or Let Your Home?

Book your free valuation to see how much your home is worth.