



8 Sweetbank Drive, Markinch – KY7 6BH

Glenrothes

Offers Over **£175,000**





home sweet home
estate agents
your local property experts



8 Sweetbank Drive

Markinch, Glenrothes

New for sale a Spacious & Well-Presented Semi-Detached Villa in small cul de sac adjacent to John Dixon Park. Award Winning Home Sweet Home Estate Agents Fife are delighted to offer for sale a perfect move in condition family/ starter home comprising Vestibule - Entrance Hall - Bright Lounge- Modern Breakfasting Kitchen - Rear Hall with 3 store cupboards - Three Double Bedrooms - Bathroom/ WC. Benefitting from DG - GCH - EPC C - HOME REPORT £180,000. Externally single drive provides off street parking for several cars, enclosed front garden & generous enclosed rear garden. Early Viewing Recommended.

Council Tax band: B

EPC Energy Efficiency Rating: C

EPC Environmental Impact Rating: C

- BEAUTIFUL & SPACIOUS SEMI-DETACHED VILLA
- THREE DOUBLE BEDROOMS
- DRIVEWAY - GENEROUS ENCLOSED GARDENS
- BRIGHT LOUNGE
- MODERN BREAKFASTING KITCHEN
- BATHROOM - HALL WITH 3 STORES
- DG- GCH - EPC C - HOME REPORT £180,000
- GENEROUS ENCLOSED GARDENS
- CUL DE SAC NEXT TO PARK ENTRANCE
- SUPER STARTER/ FAMILY HOME





home sweet home
estate agents
your local property experts



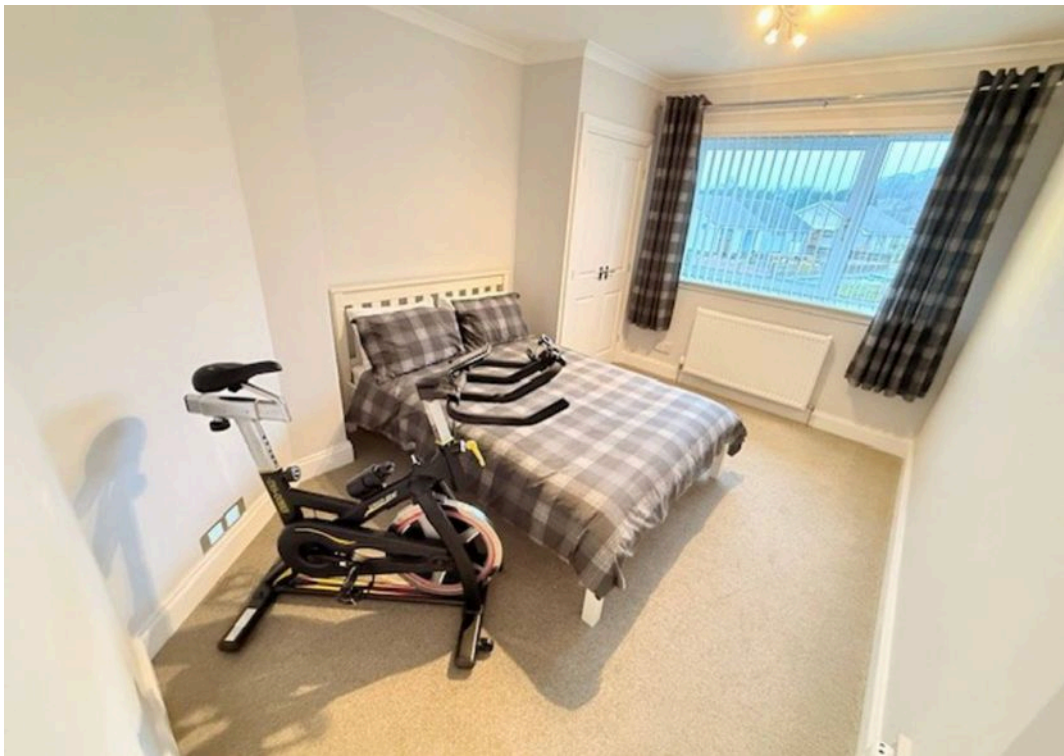
GARDEN

Large garden to front & rear.

DRIVEWAY

4 Parking Spaces





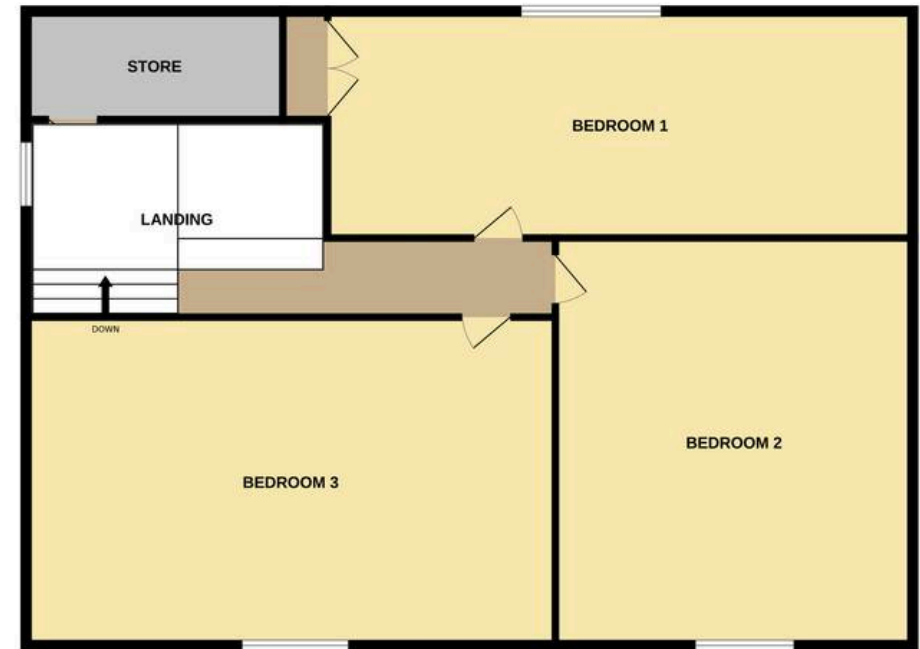
Energy Efficiency Rating			
	Current	Potential	
Very energy efficient - lower running costs			
(92+) A			
(81-91) B			
(69-80) C			
(55-68) D			
(39-54) E			
(21-38) F			
(1-20) G			
Not energy efficient - higher running costs			
	72	78	
England, Scotland & Wales		EU Directive 2002/91/EC	

Environmental Impact (CO ₂) Rating			
	Current	Potential	
Very environmentally friendly - lower CO ₂ emissions			
(92+) A			
(81-91) B			
(69-80) C			
(55-68) D			
(39-54) E			
(21-38) F			
(1-20) G			
Not environmentally friendly - higher CO ₂ emissions			
	71	74	
England, Scotland & Wales		EU Directive 2002/91/EC	

GROUND FLOOR



1ST FLOOR



Whilst every attempt has been made to ensure the accuracy of the floorplan contained here, measurements of doors, windows, rooms and any other items are approximate and no responsibility is taken for any error, omission or mis-statement. This plan is for illustrative purposes only and should be used as such by any prospective purchaser. The services, systems and appliances shown have not been tested and no guarantee as to their operability or efficiency can be given.
Made with Metropix ©2025



home sweet home
estate agents
your local property experts