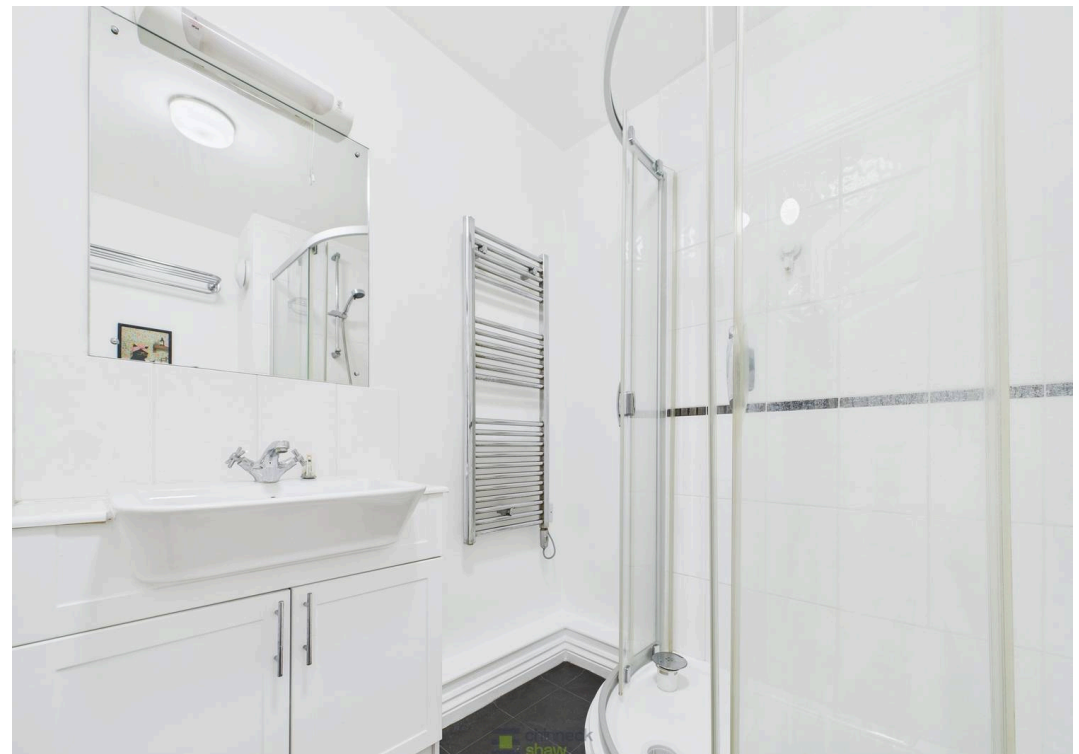




10 Holmes Park, 128 Milton Road
Southsea

£155,000





10 Holmes Park

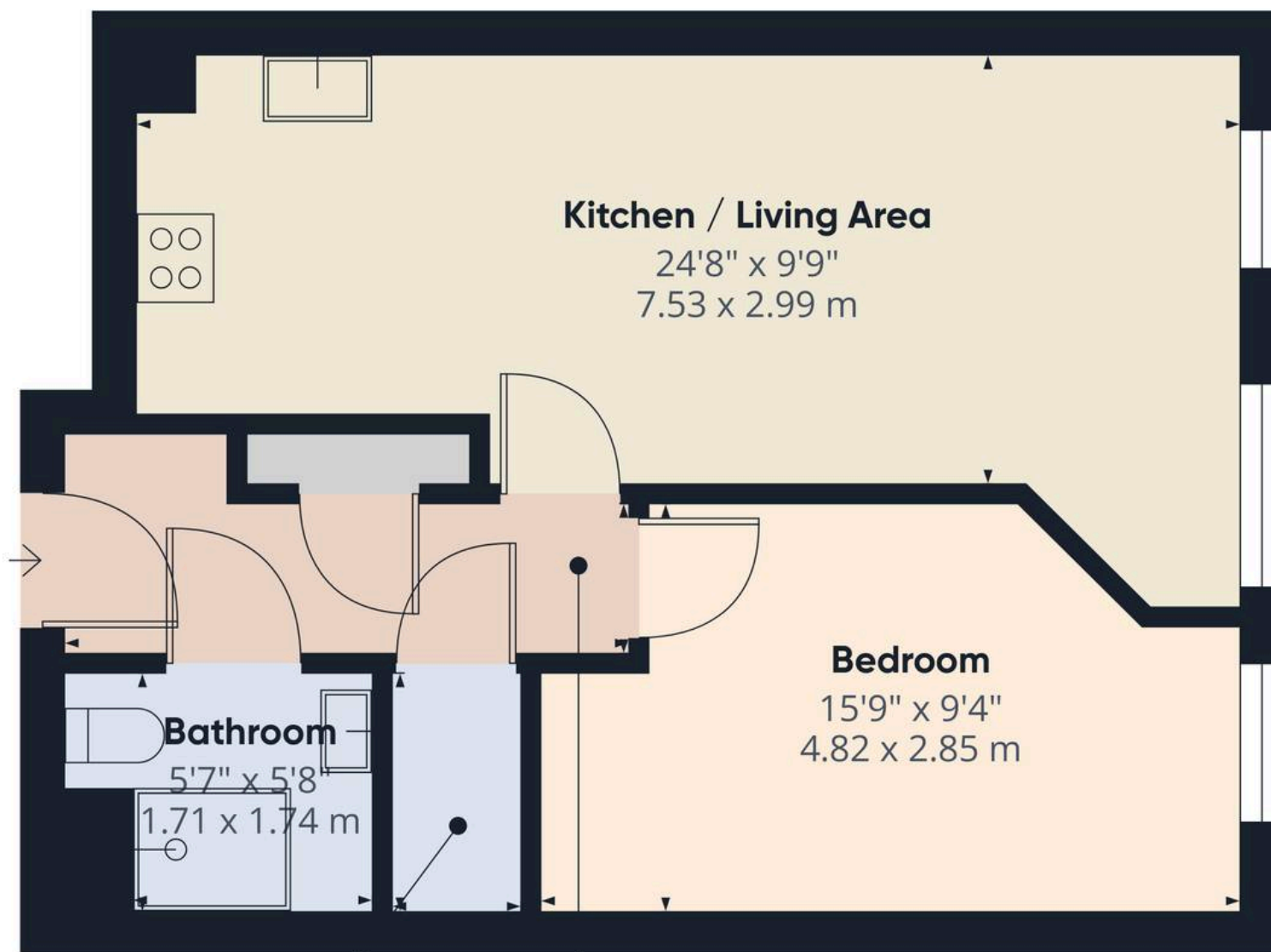
Southsea

In a popular residential area, this contemporary one-bedroom flat with gated parking offers the perfect combination of comfort and style. Its prime location ensures excellent convenience, whether you are a young professional after a sophisticated home or a couple looking to downsize without compromise.

The bright, open-plan design brings together the kitchen, dining, and living areas, ideal for relaxing or entertaining. Open up the Juliet balcony for a morning coffee or evening wind-down with city views. The bedroom is a tranquil retreat, comfortably fitting a king-size bed and extra storage. A modern shower room with sleek fittings adds to the appeal. Allocated parking is included, while the neighbourhood offers great amenities, green spaces, and strong transport links. In summary, this stylish 1-bedroom flat delivers modern urban living and is an excellent opportunity for buyers seeking a welcoming home. Book your viewing today and step into your future home.

Material Information • Tenure: Leasehold • Council Tax: Band B • Electricity: Mains Supply • Heating: Electric • Water Supply: Mains Supply • Sewage: Mains Supply • Broadband: Standard, Superfast and Ultrafast Fibre are all available in this area • Parking: Allocated • Mobile: Ofcom official website checker states that EE, Vodafone, O2 and Three available in the area • Flood Risk: Low risk





Approximate total area⁽¹⁾

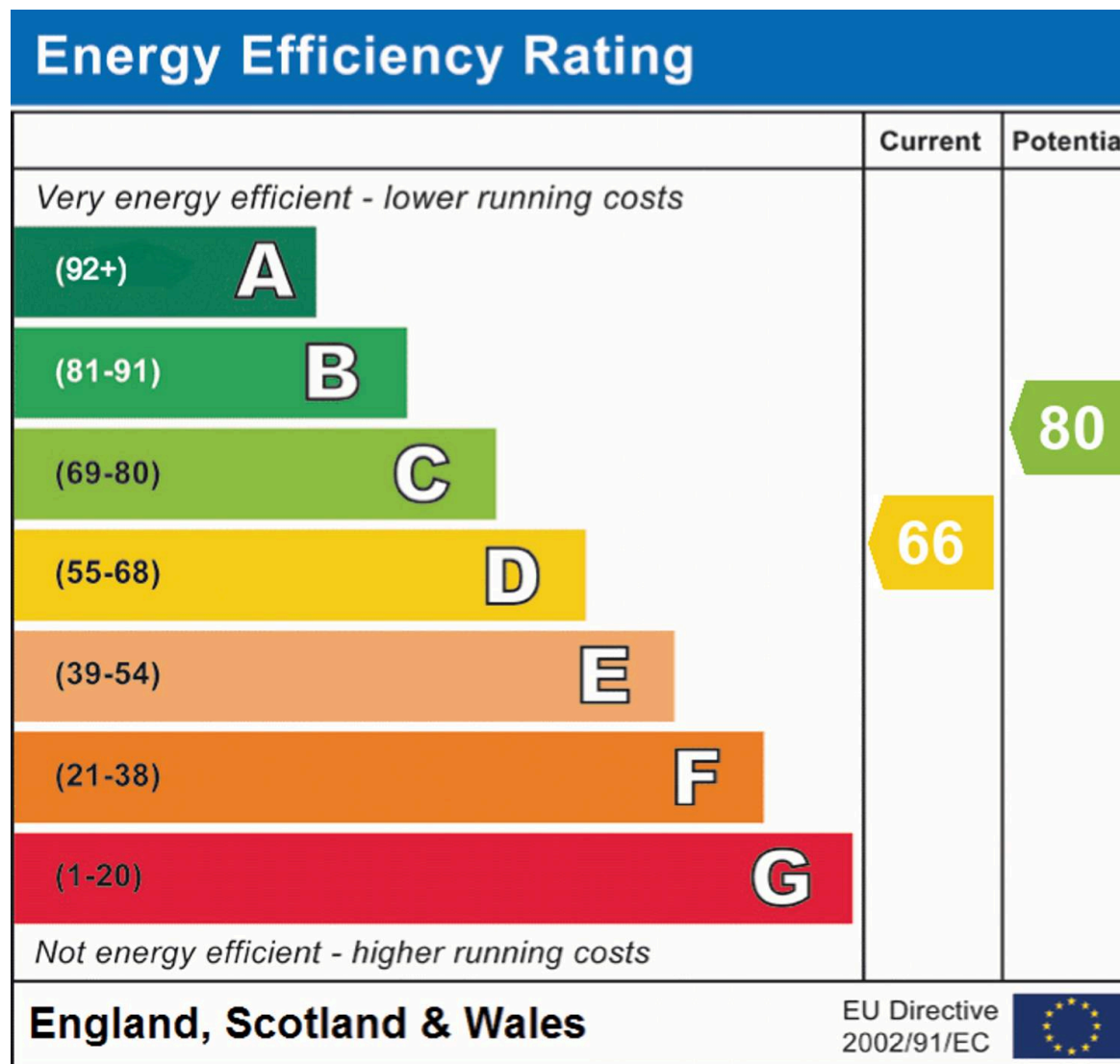
481 ft²

44.6 m²

(1) Excluding balconies and terraces

Calculations reference the RICS IPMS 3C standard. Measurements are approximate and not to scale. This floor plan is intended for illustration only.

GIRAFFE360



Chinneck Shaw

Bridge House, Milton Road, Portsmouth – PO3 6AN

023 9282 6731

hello@chinneckshaw.co.uk

www.chinneckshaw.co.uk/

Chinneck Shaw, Bridge House, Milton Road, PO3 6AN Consumer Protection from Unfair Trading Regulations 2008: These details are for guidance only and complete accuracy cannot be guaranteed. If there is any point which is of particular importance, verification should be obtained. The do not constitute a contract or part of a contract. All measurements are approximate. No guarantee can be given with regard to planning permissions or fitness for purpose. No apparatus, equipment, fixture or fitting has been tested. Items shown in the photographs are NOT necessarily included. Interested Parties are advised to check availability and make an appointment to view before travelling to see a property.