

130B Station Road, Hadfield, Glossop, SK13 1AJ



- FREEHOLD & CHAIN FREE
- Central Hadfield Location
- One Bedroom Apartment
- Loft Room with Velux Windows
- Large Kitchen/Diner

- Close to Shops and Amenities
- Near to Hadfield Train Station
- Great Potential for Buyers or Investors
- In Need of Modernisation
- Countryside Walks Nearby

130B Station Road, Hadfield, Glossop, SK13 1AJ

MAIN DESCRIPTION

Stepping Stones are delighted to offer for sale this one bedroom apartment set in a central Hadfield location, offering a fantastic opportunity for buyers looking for a property in need of modernisation, with excellent potential to redesign and update to personal taste. Ideally positioned close to Hadfield train station, it is perfect for commuters, first-time buyers, couples, or investors looking for a well-located home within walking distance to local shops, amenities.

This first-floor apartment offers a fantastic opportunity for first-time buyers or investors, with excellent potential to modernise and personalise. Located in central Hadfield, just a short walk from the train station and local shops and amenities, combining convenience with comfortable, adaptable living space.

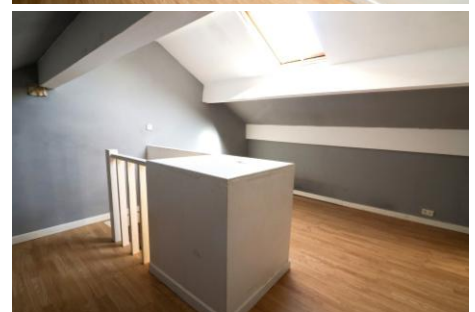
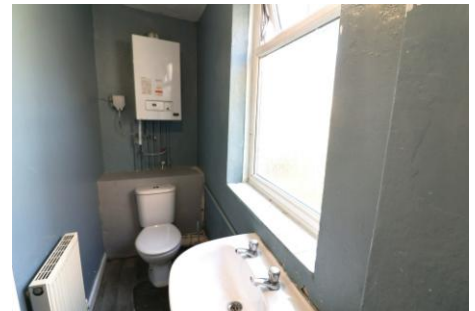
The apartment features a bright and spacious lounge, which could also function as a second bedroom or home office. The spacious kitchen/diner also features a large under-stairs storage cupboard, adding valuable utility space. The bedroom is a generous loft-style room with a Velux window and a central dividing wall, offering flexible use as a sleeping area, studio, or home office. The bathroom is fitted with a three-piece suite including a shower, low-level WC, and pedestal sink.

With its central location, this first-floor apartment provides an excellent opportunity to create a stylish and comfortable home. Its adaptable living spaces and scope for modernisation make it ideal for buyers looking to invest in a well-located property with strong potential.

Hadfield is a charming and well-connected village located in the High Peak district of Derbyshire, just a stone's throw from the edge of the Peak District National Park. Best known as the filming location for the popular TV series *The League of Gentlemen*, Hadfield combines characterful charm with everyday convenience.

The village offers a range of local amenities including independent shops, cafés, pubs, schools, and parks, making it a popular choice for families, first-time buyers, and commuters. Hadfield train station provides direct services to Manchester Piccadilly, offering excellent connectivity for those working in the city.

Surrounded by beautiful countryside, including nearby Bottoms and Valehouse Reservoirs, Hadfield is perfect for those who enjoy walking, cycling, and outdoor activities while still wanting to stay close to urban centres like Glossop and Manchester. With its welcoming community, scenic setting, and great transport links, Hadfield strikes an ideal balance between rural living and modern convenience.



130B Station Road, Hadfield, Glossop, SK13 1AJ

LOUNGE

13' 9" x 13' 2" (4.19m x 4.01m) A versatile room with a uPVC double-glazed window to the front, ceiling light point, wall-mounted radiator, and an internal cupboard housing the gas and electric meters.

KITCHEN

11' 7" x 10' 7" (3.53m x 3.23m) Fitted with a selection of high and low-level units with contrasting work surfaces and splashback tiling, stainless-steel sink with drainer and mixer tap, uPVC double-glazed window to the rear elevation, electric oven with hob, space for a fridge-freezer and space/plumbing for both a washing machine and tumble dryer. Wall-mounted radiator, ceiling light point and internal timber door to a large under-stairs storage area.

BATHROOM

10' 3" x 3' 2" (3.12m x 0.97m) Comprising a three-piece suite including low-level WC, pedestal sink, and shower unit. uPVC double-glazed window to the side elevation, electric shower, ceiling light point, wall-mounted radiator and boiler housing.

LOFT ROOM

15' 6" x 13' 8" (4.72m x 4.17m) Accessed via an internal staircase, this spacious loft room features a Velux window, ceiling light point, wall-mounted radiator, and a central dividing wall.

EXTERNALLY

Access to communal yard to the rear of the property.

DISCLAIMER

The vendor has advised the following:

Property Tenure - Freehold

EPC Rate - D

Council Tax Band Rating - A

Council - High Peak Borough Council



Awaiting floorplan

Agents Disclaimer: Stepping Stones Asset Management Ltd, their clients and employees 1: Are not authorised to make or give any representations or warranties in relation to the property either here or elsewhere, either on their own behalf or on behalf of their client or otherwise. They assume no responsibility for any statement that may be made in these particulars. These particulars do not form part of any offer or contract and must not be relied upon as statements or representations of fact. 2: Any areas, measurements or distances are approximate. The text, photographs and plans are for guidance only and are not necessarily comprehensive. It should not be assumed that the property has all necessary planning, building regulation or other consents and Stepping Stones Asset Management Ltd have not tested any services, equipment or facilities. Purchasers must make further investigations and inspections before entering into any agreement.

Purchaser information -The Money Laundering, Terrorist Financing and Transfer of Funds(Information on the Payer) Regulations 2017(MLR 2017) came into force on 26 June 2017. Stepping Stones Asset Management Ltd require any successful purchasers proceeding with a property to provide two forms of identification i.e. passport or photocard driving license and a recent utility bill or bank statement. We are also required to obtain proof of funds and provide evidence of where the funds originated from. This evidence will be required prior to Stepping Stones Asset Management removing a property from the market and instructing solicitors for your purchase.

Third Party Referral Arrangements - Stepping Stones Asset Management may have established professional relationships with third-party suppliers for the provision of services to Clients. As remuneration for this professional relationship, the agent may receive referral commission from the third-party companies. Details are available upon request.