



Ivory Close, Eccles

Manchester

HILLS

Offers in excess of £220,000



# Ivory Close

Eccles, Manchester

CHAIN FREE! \* FANTASTIC FIRST TIME BUY \* WELL PRESENTED THROUGHOUT \* CONTEMPORARY FITTED KITCHEN & DINING AREA \* THREE SPACIOUS BEDROOMS \* Ideally LOCATED IN A POPULAR RESIDENTIAL AREA \* Council Tax band: B

Tenure: Leasehold

- Fantastic three bedroom semi-detached property coming to the market CHAIN FREE!
- Tucked Away on a Quiet Cul De Sac
- Modern Fitted Kitchen & Dining Area
- Family Lounge with patio doors to the rear garden!
- Three Generous Bedrooms
- Family Bathroom & Downstairs W.C.
- Gardens to both the Front & Rear
- Off Road Parking for Multiple Cars
- Perfect first time buy!
- Surrounded by Excellent Amenities & Transport Links



HILLS

### Entrance Hallway

### Lounge

14' 5" x 9' 7" (4.39m x 2.92m)

### Kitchen

7' 5" x 16' 0" (2.26m x 4.88m)

### W.C

2' 10" x 6' 2" (0.86m x 1.88m)

### Landing

### Bedroom One

8' 0" x 13' 10" (2.44m x 4.22m)

### Bedroom Two

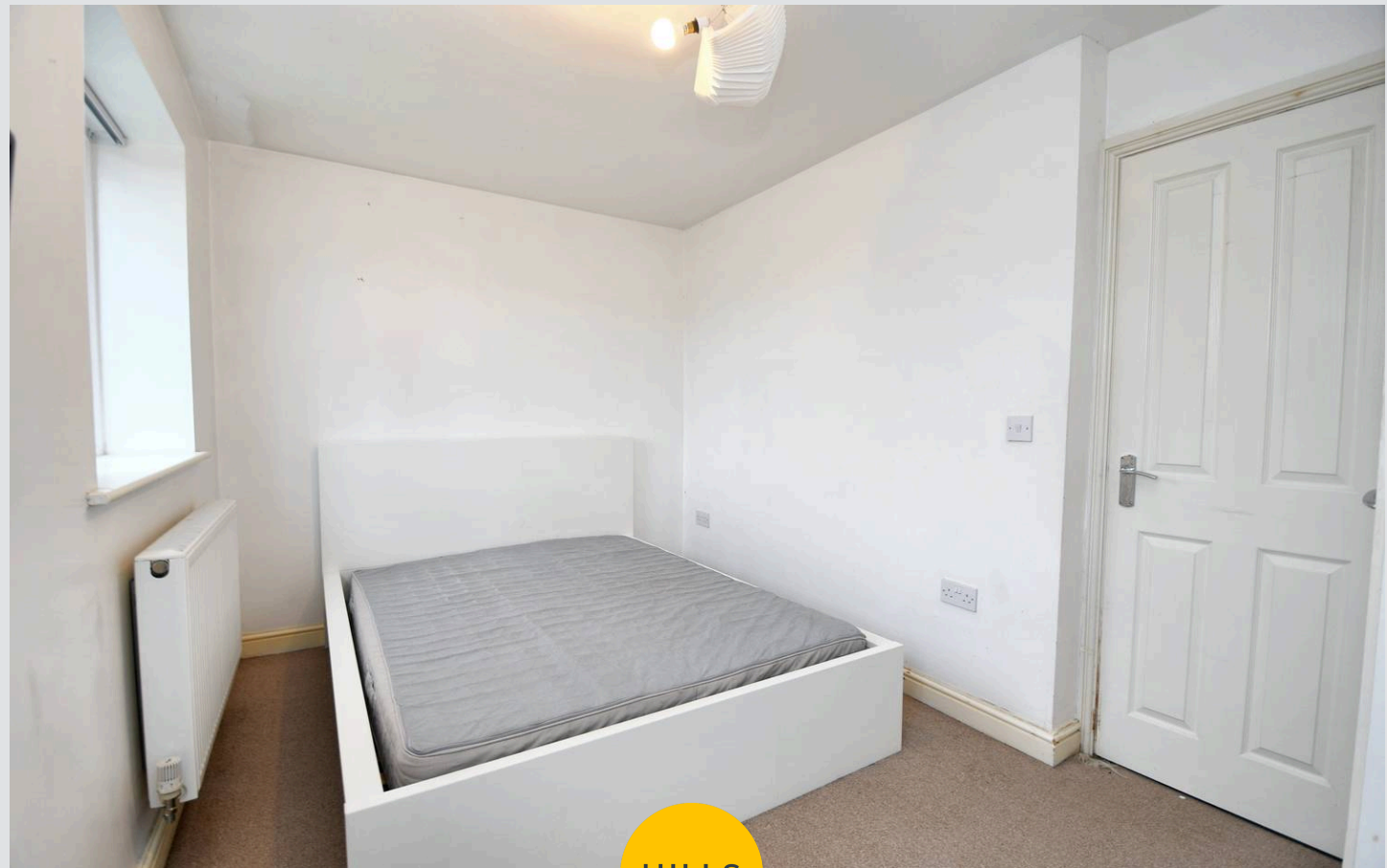
11' 5" x 7' 9" (3.48m x 2.36m)

### Bedroom Three

6' 3" x 9' 6" (1.91m x 2.90m)

### Bathroom

5' 9" x 7' 8" (1.75m x 2.34m)



HILLS



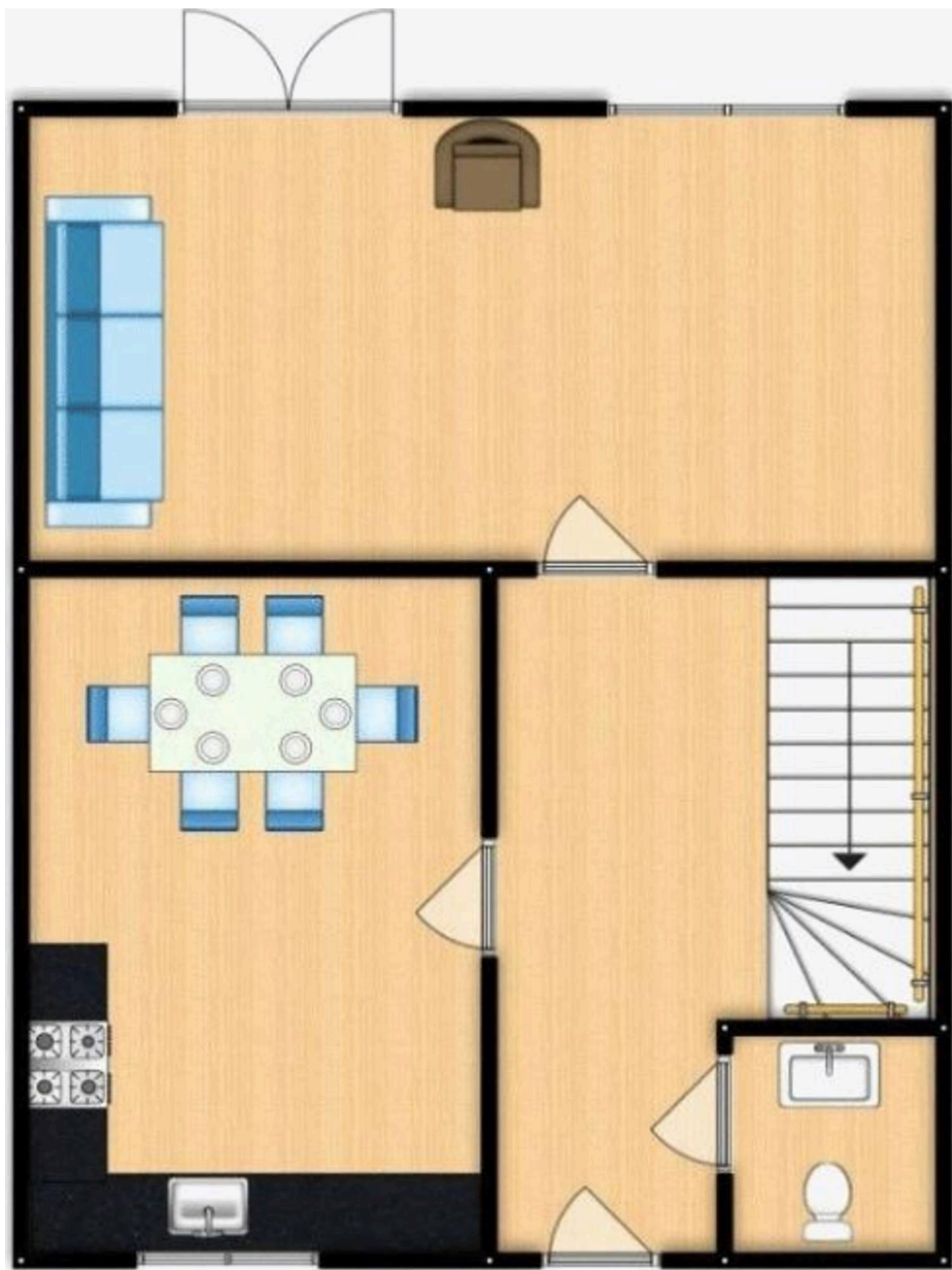




HILLS











## Hills | Salfords Estate Agent

Hills Residential, Sentinel House Albert Street – M30 0SS

0161 707 4900

[sales@hills.agency](mailto:sales@hills.agency)

[www.hills.agency/](http://www.hills.agency/)



By law, we are required to conduct anti-money laundering checks on all potential buyers and sellers. In line with HMRC guidelines, our trusted partner, Coadjute, will securely manage these checks on our behalf. A non-refundable fee of £45 + VAT per person will apply, and Coadjute will handle the payment. Once an offer is accepted, Coadjute will send a secure link for you to complete the biometric checks. These checks must be completed before we can send the memorandum of sale to all parties. PLEASE NOTE: The Agent has not tested any equipment, fixtures, fittings or services so cannot verify that they are in working order or fit for the purpose. References to the properties tenure are based on information supplied by the seller. You are advised to check the availability of this property before travelling any distance to view. Every effort has been made to ensure these particulars are correct and not misleading but their accuracy is not guaranteed nor do they form part of any contract.