

Osprey Drive, Trumpington

+44 (0) 1223 508050

lettings@cookecurtis.co.uk

www.cookecurtis.co.uk

A modern well presented, top floor, two bedroom apartment on the popular Trumpington Meadows development providing excellent access to Cambridge City Centre, Addenbrookes Hospital and the train station.

£1,750 pcm

Osprey Drive, Cambridge,
CB2 9FU



Located right at the heart of Trumpington Meadows, a stone's throw from the country park and Sainsburys, this top floor flat would suit professional tenants looking for convenient and well kept accommodation just south of the City.

The flat is on the second floor and is accessible via stairs. There is a generous living/dining area with a private balcony and windows on two sides of the room letting in plenty of light. The kitchen is fully equipped with a gas hob and oven, integrated fridge/freezer, a dishwasher and a washing machine. There is space for a dining area as well as a cosy lounge.



Both bedrooms are good sized doubles, the master has a built-in wardrobe, an en-suite shower room and a small balcony. The family bathroom comprises a bath, WC and basin. In the hallway there are two storage cupboards.

The flat has a phone entry system, one allocated parking space and there is communal bike storage in the block.

Available unfurnished from February 2026.

Trumpington is a thriving, fast growing part of the city that still manages to retain its village identity and sense of community. It is exceptionally well located for access into the Addenbrooke's campus, out to the M11 and into the city by car, bus, guided bus, by bicycle on one of several purpose-built cycle routes, or even an enthusiastic walk. The city's mainline station can be easily reached along the guided busway cycleway without having to mix with car traffic at all.





72 sqm / 783 sqft

2 bed, 1 recep, 2 bath

Council tax - C

EPC - B

Gas central heating

Allocated parking

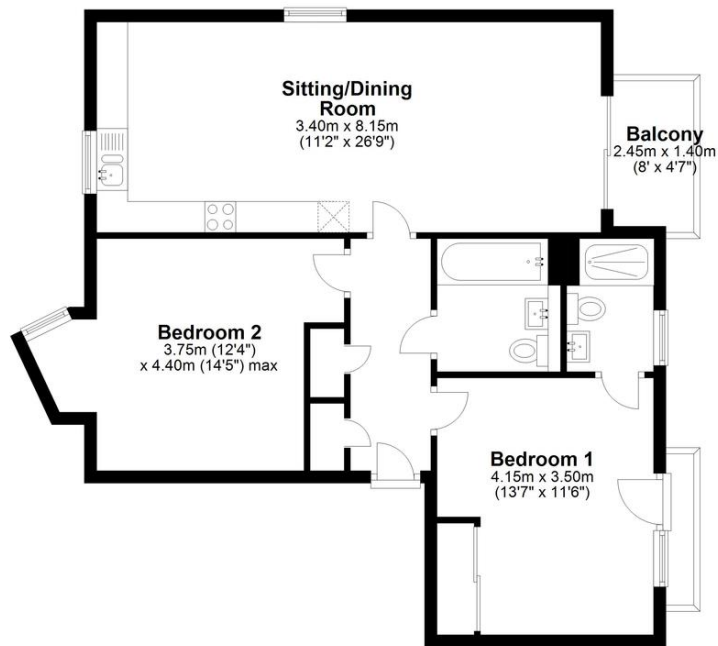
Unfurnished

Available February 2026



Second Floor

Approx. 72.8 sq. metres (783.4 sq. feet)



Total area: approx. 72.8 sq. metres (783.4 sq. feet)



Trumpington is a thriving, fast growing part of the city that still manages to retain its village identity and sense of community. It is exceptionally well located for access into the Addenbrooke's campus, out to the M11 and into the city by car, bus, guided bus, by bicycle on one of several purpose-built cycle routes, or even an enthusiastic walk. The city's mainline station can be easily reached along the guided busway cycleway without having to mix with car traffic at all. The area has three primary schools and a modern state-of-the-art secondary school that opened in 2016 bringing with it excellent sporting facilities including a private members gym. A number of Private Schools are within cycling distance. There are also various restaurants, pubs, shops, a post office, hairdresser, surgery, pharmacy, library, Waitrose supermarket and two country parks.

COOKE
CURTIS
& CO