

Aldykes, Hatfield – AL10 8EB

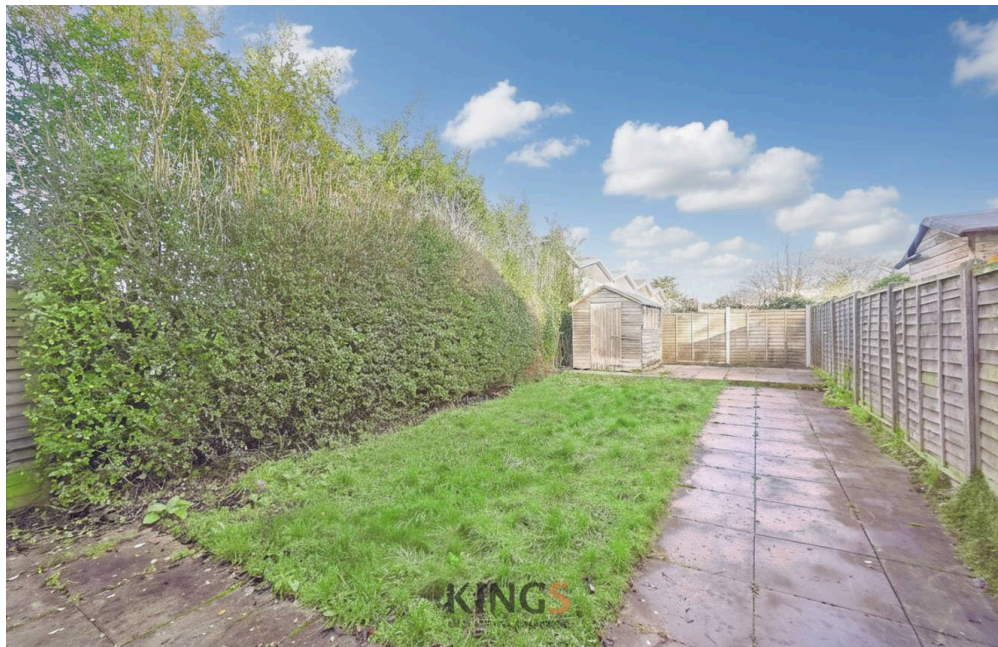
£1,500 PCM

MID TERRACE HOUSE • TWO DOUBLE BEDROOMS • SPACIOUS LIVING ROOM • LARGE KITCHEN • PRIVATE REAR GARDEN • NEWLY DECORATED • CLOSE TO AMENITIES • UNFURNISHED • AVAILABLE IMMEDIATELY • EPC RATING – TBC

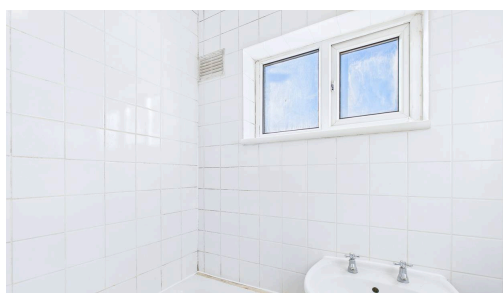
KINGS
SALES LETTINGS MANAGEMENT



Situated near to many amenities including the Hilltop, Galleria and Town Centre is this recently decorated two double bedroom house available to move into immediately. The ground floor comprises an inviting entrance, spacious living room and a separate kitchen offering plenty of worktop space and storage. The first floor features a spacious double bedroom with fitted wardrobes, second double bedroom and a family bathroom with separate w/c. This unfurnished home further benefits from a low maintenance rear garden and is within easy reach of transport links including A1(m), A414 and Hatfield Train Station.

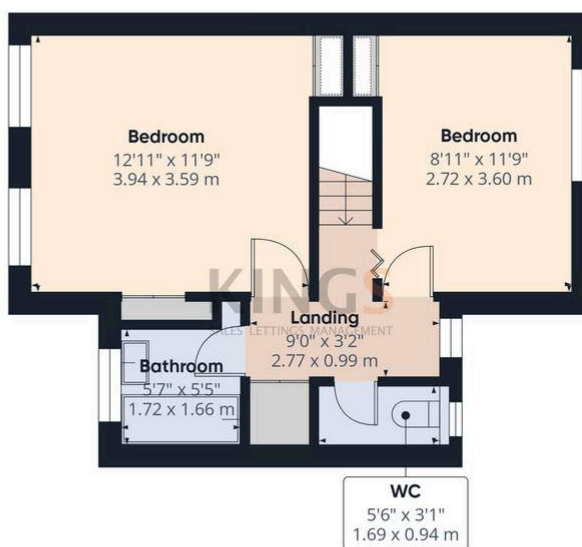


Council Tax band: C
EPC Energy Efficiency
Rating: E
EPC Environmental
Impact Rating: E





Ground Floor



Floor 1

Approximate total area⁽¹⁾
751 ft²
69.7 m²

(1) Excluding balconies and terraces

Calculations reference the RICS IPMS 3C standard. Measurements are approximate and not to scale. This floor plan is intended for illustration only.

GIRAFFE360

