



8 Broad View, Selsey, PO20 0SX

Guide Price £230,000 Freehold



## 8 Broad View

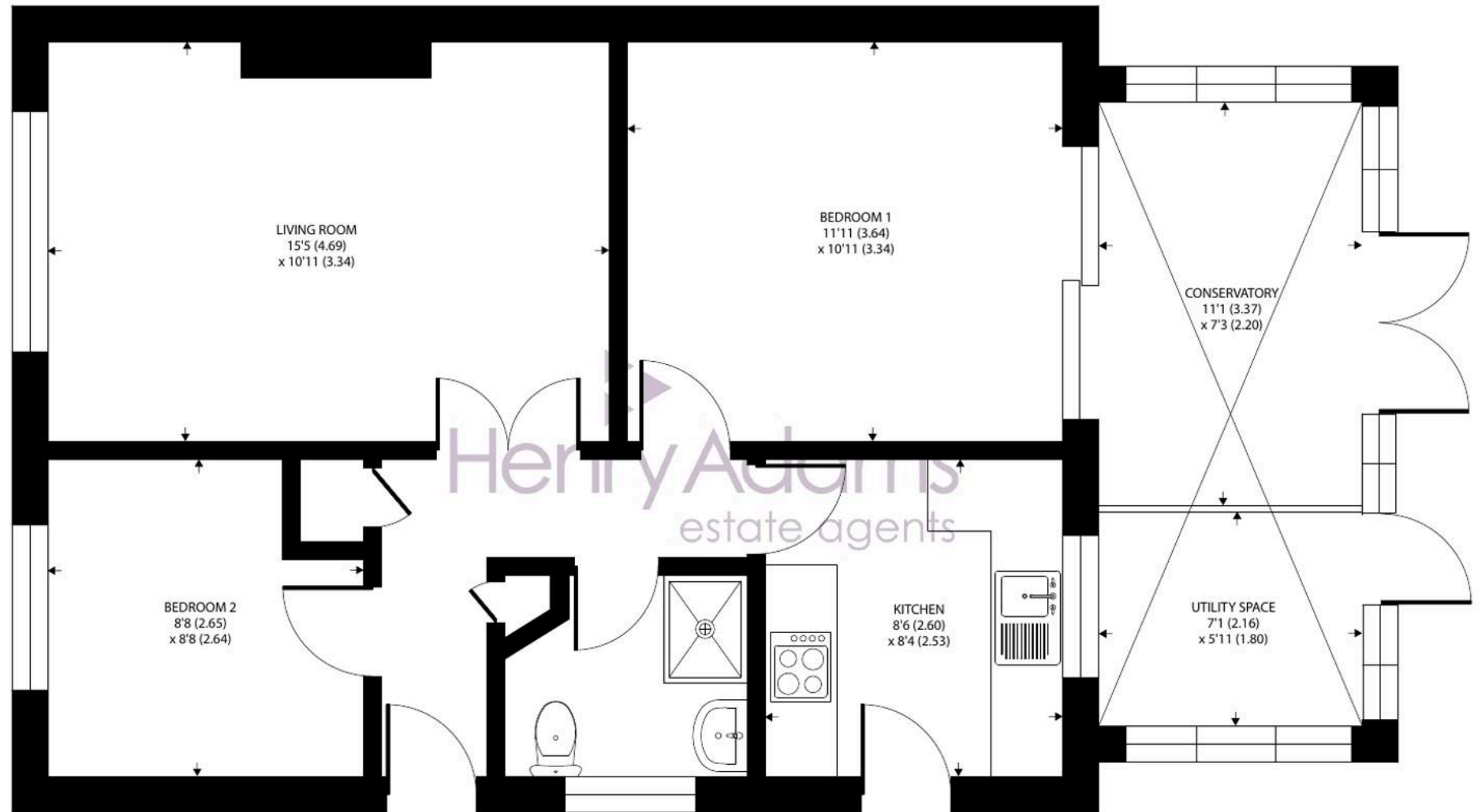
Selsey, Chichester

This semi-detached bungalow presents an excellent opportunity for those seeking a project, as it requires full refurbishment throughout and is offered with no onward chain. The accommodation is arranged to provide two well-proportioned bedrooms, a comfortable living room, a kitchen and a shower room. A greenhouse-style conservatory is located on the back of the property, offering additional space and an outlook over the garden, while a utility area has been created out of the same structure. The property benefits from a westerly facing garden, which enjoys afternoon and evening sun. Located in close proximity to local shops, a regular bus route and the beach, this bungalow offers a lifestyle of convenience and coastal living.

The front garden is laid to paving, ensuring ease of upkeep and providing a blank canvas for landscaping. The driveway, which is laid to block paving and partially covered by a car port, offers sheltered parking. Beyond double wooden gates, there is additional space also covered by the car port, along with a wooden shed that provides useful storage for tools or garden equipment. The westerly aspect of the garden ensures plenty of natural light throughout the day. This property is ideal for buyers looking to create their own home in a popular and well-connected location.

Council Tax band: C EPC Energy Efficiency Rating: D





GROUND FLOOR

Approximate Area = 701 sq ft / 65.1 sq m

For identification only - Not to scale











## Henry Adams - Selsey

Henry Adams LLP, 122 High Street, Selsey - PO20 0QE

01243 606789 • [selsey@henryadams.co.uk](mailto:selsey@henryadams.co.uk) • [www.henryadams.co.uk/](http://www.henryadams.co.uk/)

Agents Note - Our particulars are for guidance only and are intended to give a fair overall summary of the property. They do not form part of any contract or offer, and should not be relied upon as a statement or representation of fact. Measurements, areas and distances are approximate only. Photographs may include lifestyle shots and pictures of local views. No undertaking is given as to the structural condition of the property, or any necessary consents or the operating ability or efficiency of any