







## 13 Rhodfa'r Hurricane

St. Athan, Barry

Located on the outskirts of St Athan Village, Vale of Glamorgan stands this well presented and upgraded David Wilson detached family home. 13 Rhodfa'r Hurricane is within easy reach of local chops, schools, the towns of Cowbridge and Llantwit Major, and the Heritage Coastline with its beaches. The property briefly comprises; entrance hallway, cloakroom/WC, sitting room, kitchen/diner and utility room to the ground floor. To the first floor there are 4 bedrooms and family bathroom with an en-suite shower room to the master bedroom. Outside there is a garden area to the front with driveway for two cars, detached garage, and an enclosed sunny private garden to the rear with superb non slip porcelain tiles. This stunning home enjoys gas central heating, UPVC windows and doors and French doors to the rear, Sigma 3 upgraded kitchen and many other improvements throughout including – AEG Appliances, 5 Burner AWG hob with wok burner and in built wine cooler, smart lighting in the garden that can change colour/scene through an App by Nanoleaf and made to measure blinds to stay. Viewings are highly recommended to fully appreciate the rural village location and high standard throughout. Please note there is a service charge for the property to help with the upkeep and maintenance of the site.

Council Tax band: F

Tenure: Freehold

EPC Energy Efficiency Rating: B

EPC Environmental Impact Rating: B







## 13 Rhodfa'r Hurricane

St. Athan, Barry

- DETACHED FAMILY HOME
- DAVID WILSON HOME. 4 BEDROOMS.
- ENSUITE. UTILITY. EPC B85.
- 2 RECEPTION ROOMS.
- SHENTON HOUSE TYPE.
- UPGRADED BY CURRENT OWNERS.
- SIGMA 3 KITCHEN.
- DETACHED GARAGE.
- HIVE HEATING. FAST BROADBAND.
- NON SLIP PORCELAIN TILES TO REAR.





## GROUND FLOOR

### Entrance Hallway

Stairs to first floor. Doors to sitting room, kitchen/diner and cloakroom/WC. Wood effect flooring. Radiator.

### Cloakroom/WC

5' 2" x 3' 2" (1.58m x 0.97m)

UPVC opaque window to front. Low level WC. Pedestal wash hand basin with mixer tap. Radiator. Partially tiled walls.

### Sitting Room

10' 11" x 18' 9" (3.33m x 5.72m)

UPVC bay window to front. Radiators.

### Kitchen/Diner

13' 4" x 25' 1" (4.06m x 7.64m)

UPVC windows to rear. French doors to rear. Radiators. Space for dining room table and chairs. Door to utility room. Down lighting. Under stairs cupboard. Fully fitted and upgraded Sigma 3 kitchen with AEG appliances, comprising eye level units base units with drawers and work surfaces over. Integrated; wine cooler, dishwasher, fridge/freezer, eye level grill and oven and 5 burner gas AEG hob with wok burner.

### Utility Room

6' 4" x 6' 8" (1.93m x 2.03m)

Glazed door to rear. Base units with work surfaces over. Wall mounted Ideal gas boiler providing the central heating. Space for washing machine. Radiator.







## FIRST FLOOR

### Landing

Radiator. Down lighting. Loft access. Linen cupboard.

### Bedroom 1

12' 8" x 11' 1" (3.86m x 3.38m)

UPVC window to front. Radiators. Down lighting. Built in wardrobes. Door to en-suite.

### En-Suite

3' 10" x 8' 1" (1.17m x 2.46m)

Shower enclosure with mixer shower. Down lighting. Pedestal wash hand basin with mixer tap. Low level WC. Vertical radiator.

### Bedroom 2

11' 8" x 11' 9" (3.56m x 3.58m)

UPVC window to front. Down lighting. Radiator.

### Bedroom 3

9' 7" x 10' 6" (2.92m x 3.20m)

UPVC window to rear. Radiator.

### Family Bathroom

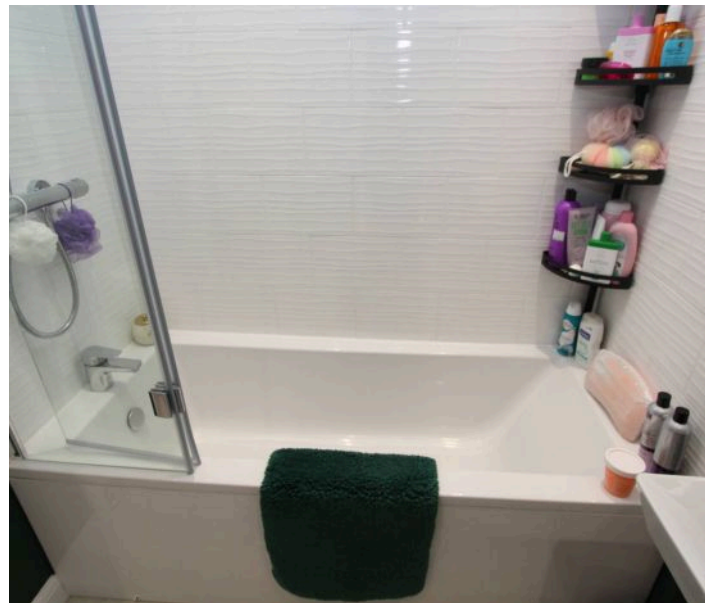
6' 1" x 7' 5" (1.85m x 2.26m)

Low level WC. Panelled bath with mixer shower over. Pedestal wash hand basin with mixer tap. Vertical radiator. Down lighting.

### Bedroom 4

6' 10" x 11' 4" (2.08m x 3.45m)

UPVC window to rear. Radiator. Down lighting.





## **GARDEN**

Front garden - open plan area. Rear garden - enclosed sunny aspect with low maintenance non slip porcelain tiles. Water tap. Electrics. Gate to side. Smart lighting that can change colour /scene via an App (made by Nanoleaf).

## **GARAGE**

Single Garage

Detached garage with an up and over door. Parking for 1 car.

## **DRIVEWAY**

2 Parking Spaces

Driveway providing parking for 2 cars.



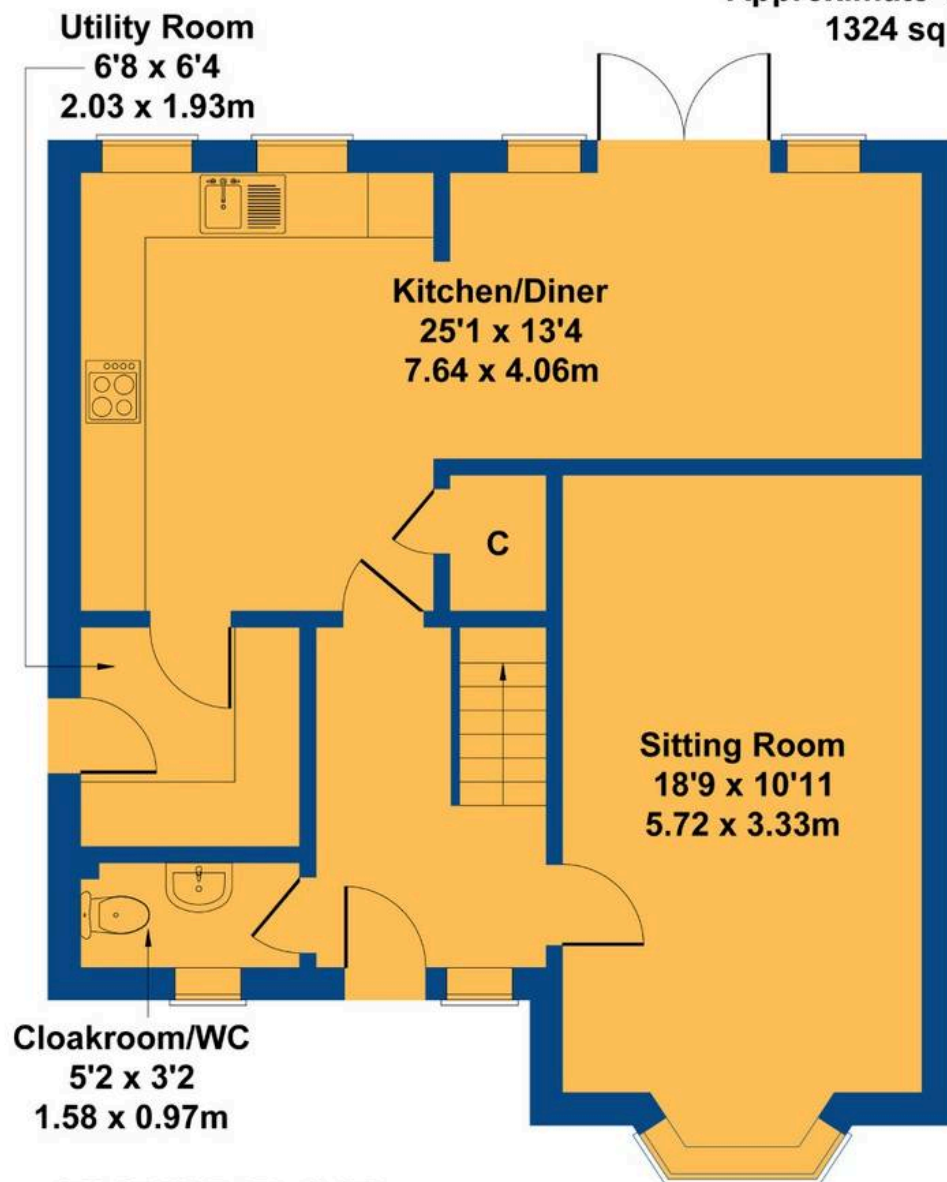




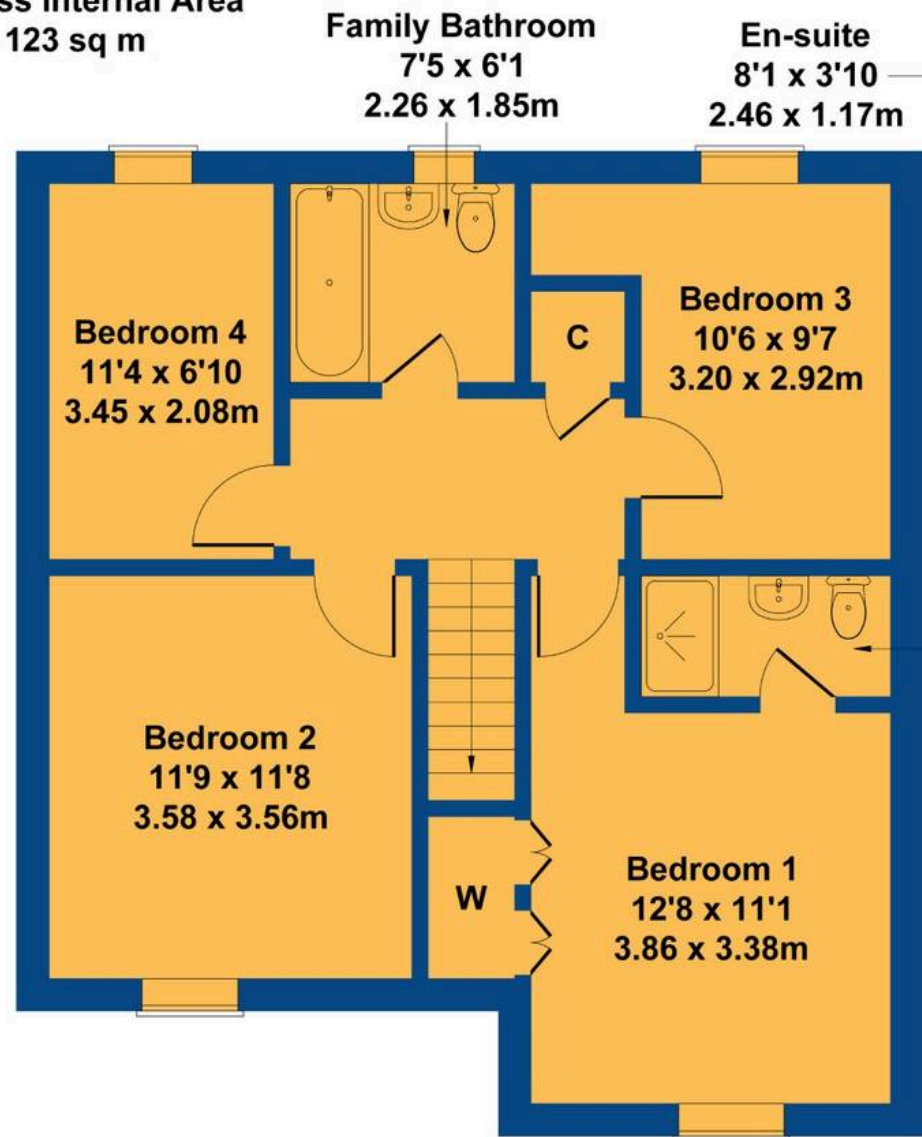


# 13 Rhodfar Hurricane

Approximate Gross Internal Area  
1324 sq ft - 123 sq m



**GROUND FLOOR**



**FIRST FLOOR**

Not to Scale. Produced by The Plan Portal 2025  
For Illustrative Purposes Only.





## Chris Davies Estate Agents

Chris Davies Estate Agent, Heritage House East Street – CF61 1XY

01446 792020

[llantwitmajor@chris-davies.co.uk](mailto:llantwitmajor@chris-davies.co.uk)

[www.chris-davies.co.uk/](http://www.chris-davies.co.uk/)

HELPFUL INFORMATION whilst we try to ensure our sales particulars are complete, accurate and reliable, if there is any point which is particularly important, please ask and we will be happy to check it, including specific information in respect of commuting links, surroundings, noise, views, or condition. For security purposes, applicants who wish to view will need to provide their name, address and telephone number. All measurements are approximate to the widest and longest points. Buyers are advised to instruct a solicitor to obtain verification of tenure and a surveyor to check that appliances, installations and services are in satisfactory condition.